

PROJECT MANAGER: LATESA TURNER, P.E.
 SURVEYED BY, DATE: CHRISTOPHER CONSULTANTS, 3/27/2018
 DESIGNED BY: KIMLEY-HORN AND ASSOCIATES, INC.
 SUBSURFACE UTILITY BY, DATE: ACCUMARK, 10/23/2019

BEGIN PROJECT
 AA1400141-2016
 STA 100+24

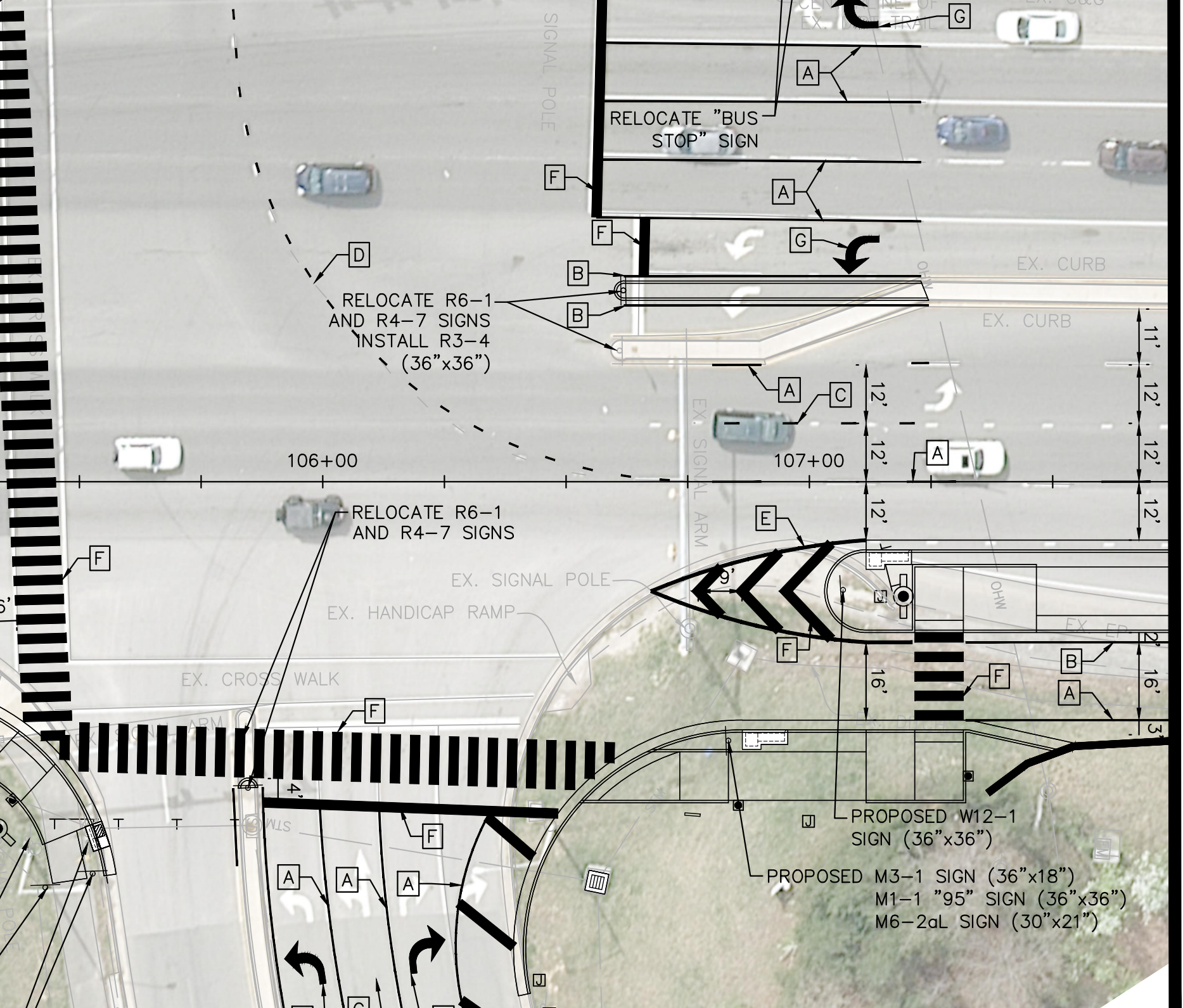
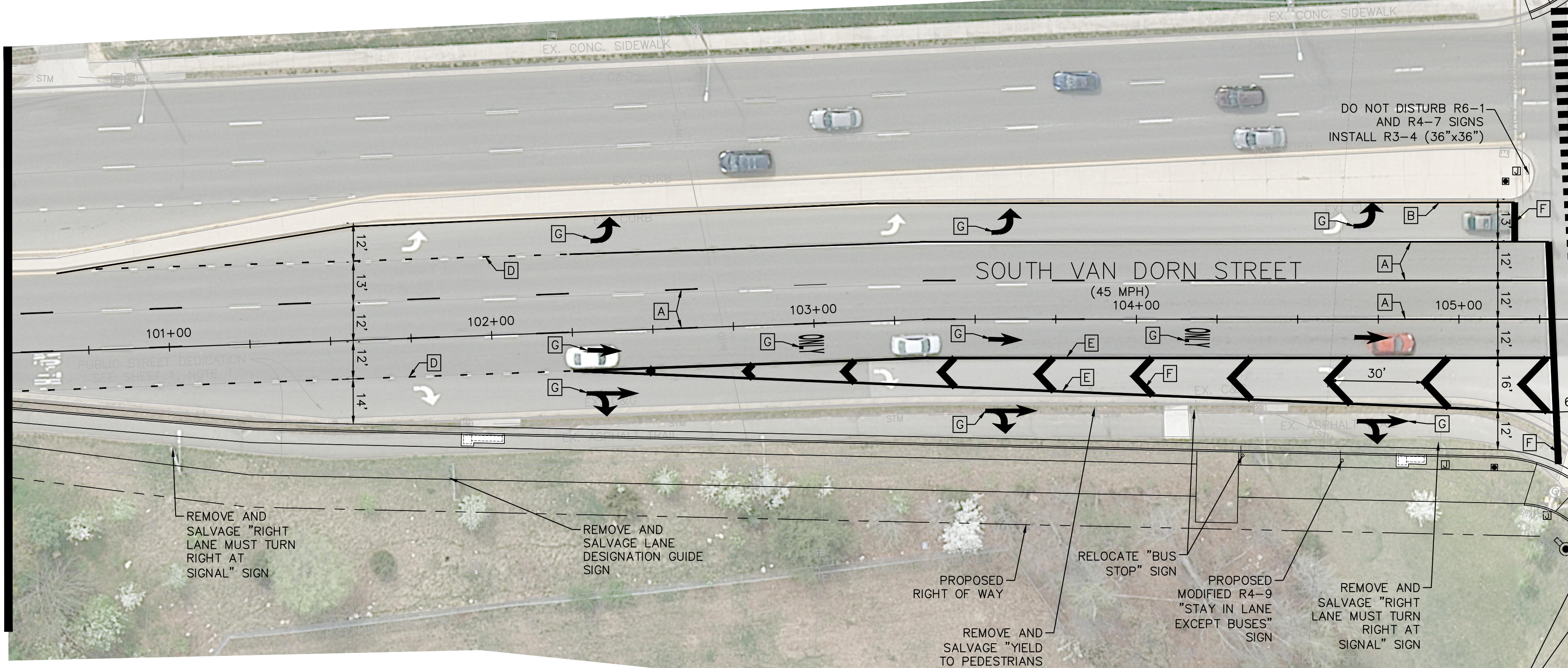
SIGNING AND STRIPING PLAN



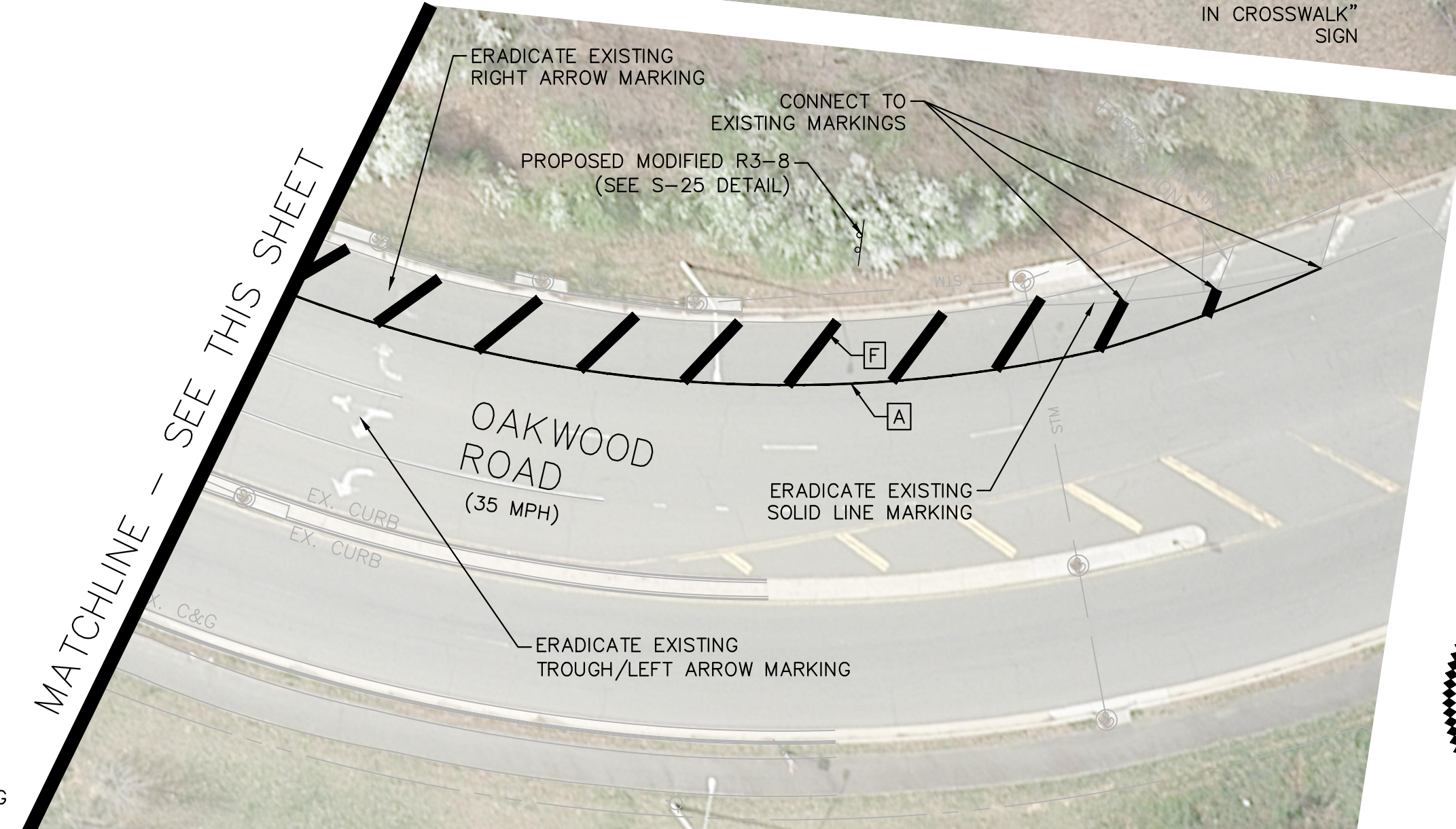
MATCHLINE STA. 100+50 - SEE THIS SHEET



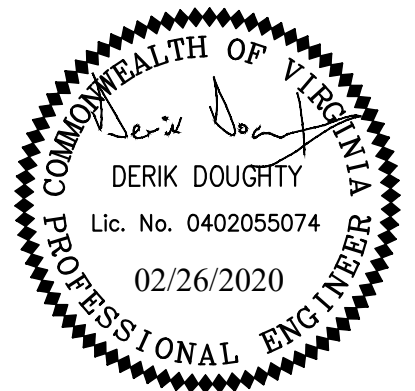
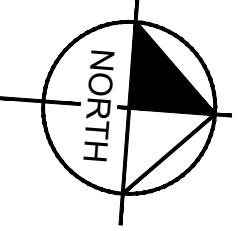
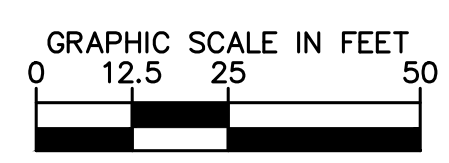
MATCHLINE STA. 100+50 - SEE THIS SHEET



MATCHLINE STA. 107+75 - SEE SHEET 6(2)



- LEGEND**
- A TYPE B, CLASS I, WHITE PAVEMENT LINE MARKING 4" WIDTH, SOLID OR 10' LINE WITH 30' SPACE
 - B TYPE B, CLASS I, YELLOW PAVEMENT LINE MARKING 4" WIDTH, SOLID
 - C TYPE B, CLASS I, WHITE PAVEMENT LINE MARKING 4" WIDTH, 3' LINE WITH 9" SPACE
 - D TYPE B, CLASS I, WHITE PAVEMENT LINE MARKING 4" WIDTH, 2' LINE WITH 6" SPACE
 - E TYPE B, CLASS I, WHITE PAVEMENT LINE MARKING 8" WIDTH, SOLID
 - F TYPE B, CLASS I, WHITE PAVEMENT LINE MARKING 24" WIDTH, SOLID
 - G TYPE B, CLASS I, WHITE PAVEMENT ARROW MARKING OR MESSAGE MARKING



Kimley»Horn

KIMLEY-HORN AND ASSOCIATES, INC.
 11400 Commerce Park Drive, Suite 400, Reston, VA 20191
 Phone: 703-674-1300

EMERGENCY POLICE - FIRE - RESCUE 911			
FAIRFAX COUNTY, VIRGINIA			
DEPARTMENT OF PUBLIC WORKS AND ENVIRONMENTAL SERVICES PLANNING & DESIGN DIVISION 12000 GOVERNMENT CENTER PARKWAY, SUITE 449 FAIRFAX, VA., 22035-0052			
OFFICE OF CAPITAL FACILITIES 703-324-5800		SOUTH VAN DORN STREET BIKE AND PEDESTRIAN ACCESS IMPROVEMENTS SIGNING AND STRIPING PLAN	
CONTRACT NO. CN		PROJECT NO. AA1400141-2016	
SCALE SEE GRAPHIC SCALE	DESIGNED BY: DD DRAFTED BY: MW CHECKED BY: MA	SHEET 6(1)	
APPROVED BY THE TRANSPORTATION DESIGN DIVISION			

Plotted By: Doughty, Derik. Sheet Set: South Van Dorn Street. Layout: (E) SIGNING AND STRIPING PLAN. February 26, 2020 08:08:15pm. K:\NVA_RDW\110213060_South Van Dorn Street\CAD\PlanSheets\SIGNING AND STRIPING PLAN.dwg