



County of Fairfax, Virginia



Richmond Highway Bus Rapid Transit

Executive Committee Meeting #7
February 21, 2020



The Richmond Highway BRT project is funded in part by the Northern Virginia Transportation Authority.





County of Fairfax, Virginia



Agenda

- **Project Updates**
 - FTA Funding
 - Categorical Exclusion
 - Public Outreach
 - Design - Intersections
 - Branding
- **Station Architecture**
- **Discussion**





County of Fairfax, Virginia

Project Updates

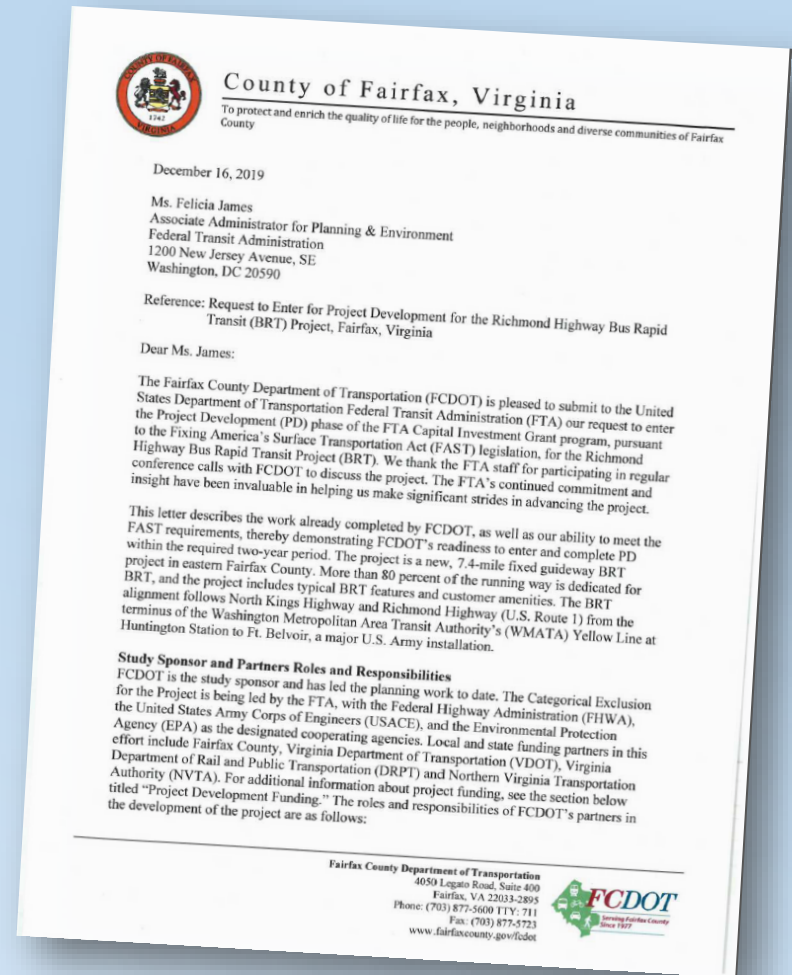


County of Fairfax, Virginia



FTA Funding

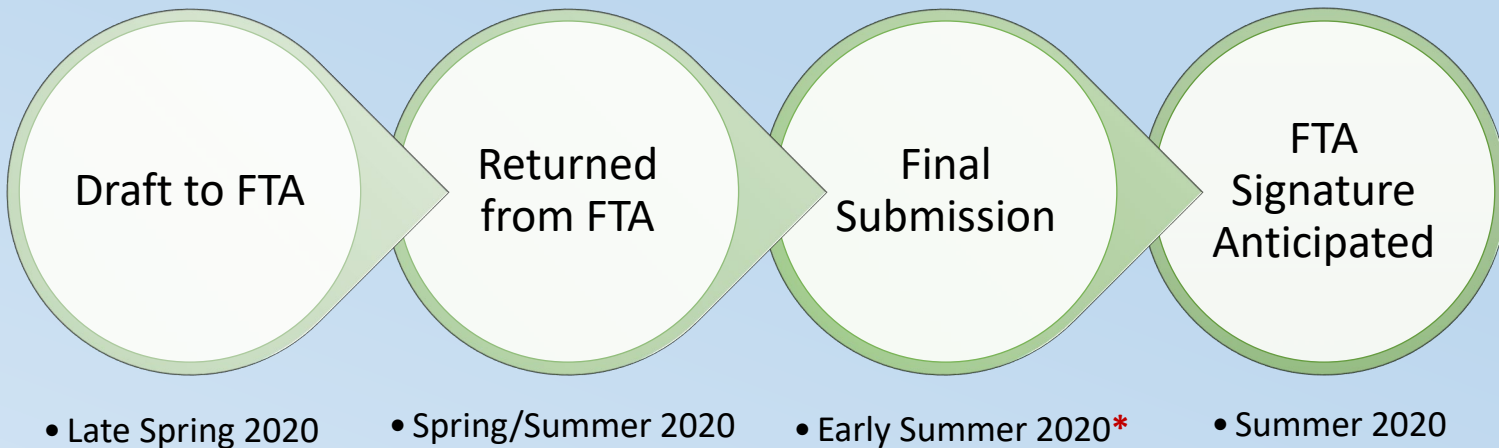
- Request to enter first step (Project Development) submitted December 16, 2019
- Responded to FTA requests for clarification
- 45-day review underway
- Project Development must be completed within two years





NEPA Categorical Exclusion

Will demonstrate that there are no significant environmental impacts



***Timing contingent on the Section 106 Process**

Topics include:

- Purpose and Need
- Design Description
- Socioeconomics and Land Use
- Natural resources
- Indirect and Cumulative Effects
- Visual Analysis
- Hazardous Materials
- Air Quality
- Noise and Vibration
- Historic architecture and archaeology





Public Outreach

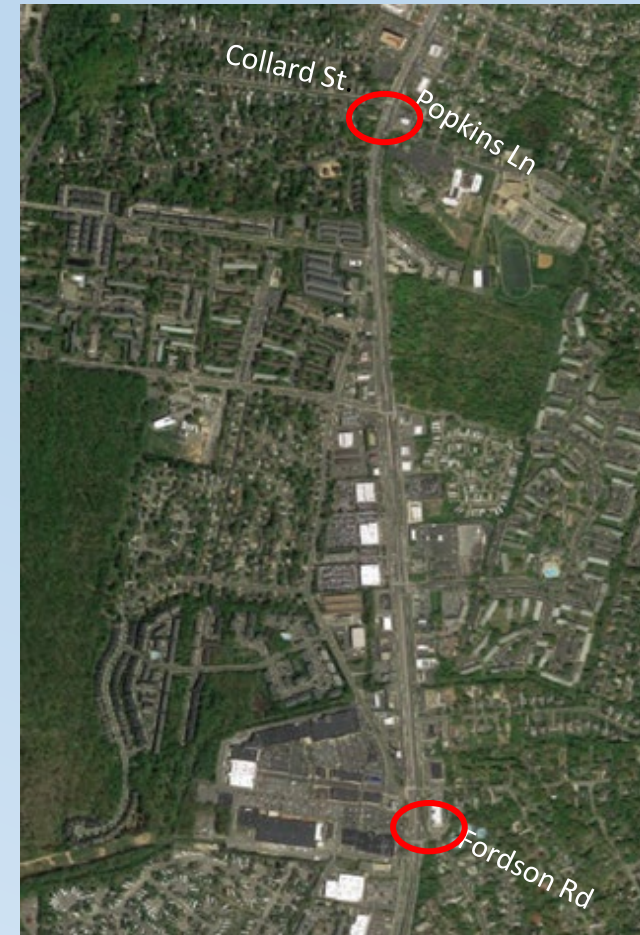
- **Community Advisory Group**
 - February 13 meeting highlights
- **Public Meetings**
 - Richmond Highway Community Discussion in March/April
 - BRT-only meeting in May
- **Pop-Up Events**
- **Newsletters, Flyers, Mailings**
- **Website & Social Media**
 - Recording of PIM 3 presentation now posted
 - Developing interactive map





Design - Intersection Modifications

- **Collard Street & Popkins Lane**
 - Consolidates two closely-spaced intersections to one (consistent with the Embark Comprehensive Plan)
 - Improves safety for vehicular travel
 - Eliminates a crossing of the BRT system, improving safety
- **Fordson Road**
 - Richmond Highway median cannot accommodate Hybla Valley Station and left turn lane
 - BRT Team proposed limiting access to Fordson to right in/right out
 - With community input, three new alternatives have been identified, totaling 4 options



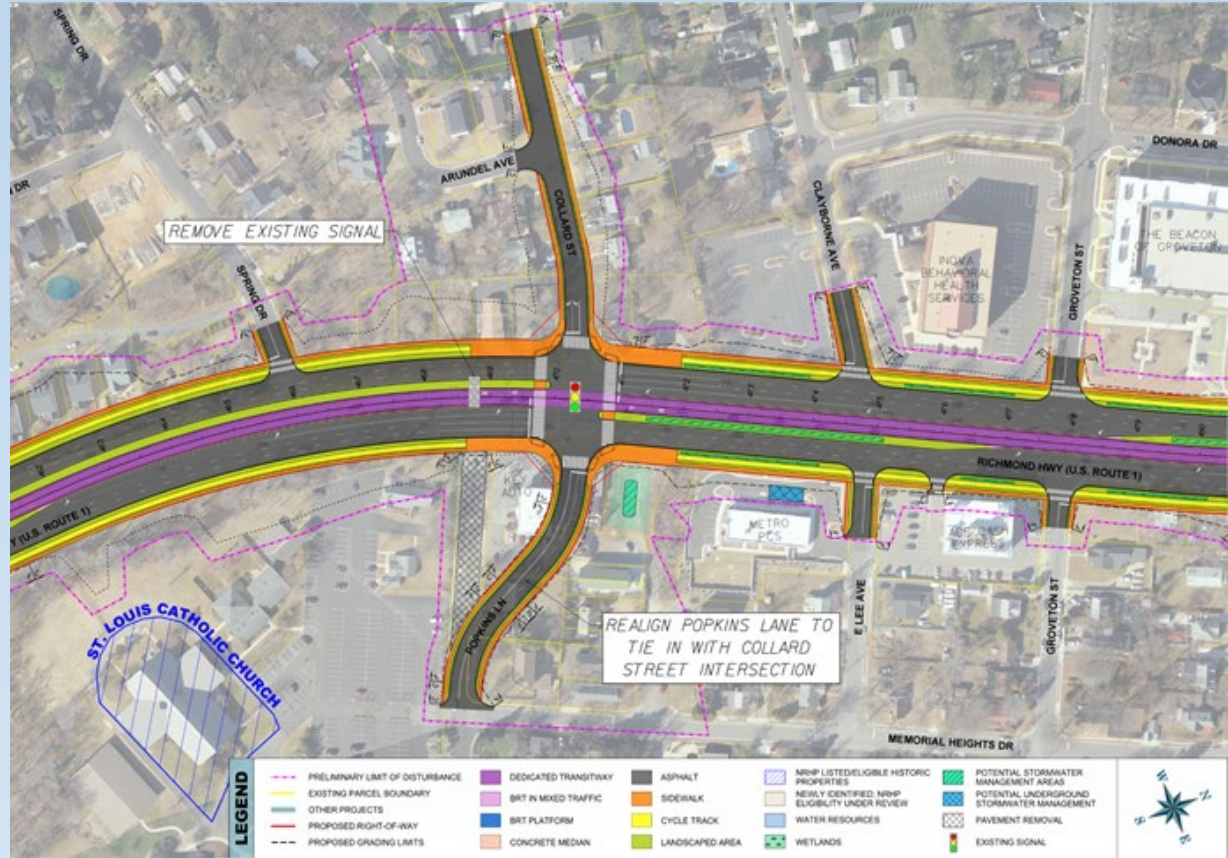


County of Fairfax, Virginia



Intersection of Collard St & Popkins Ln

- BRT design team continues to work on refining design and limit impacts



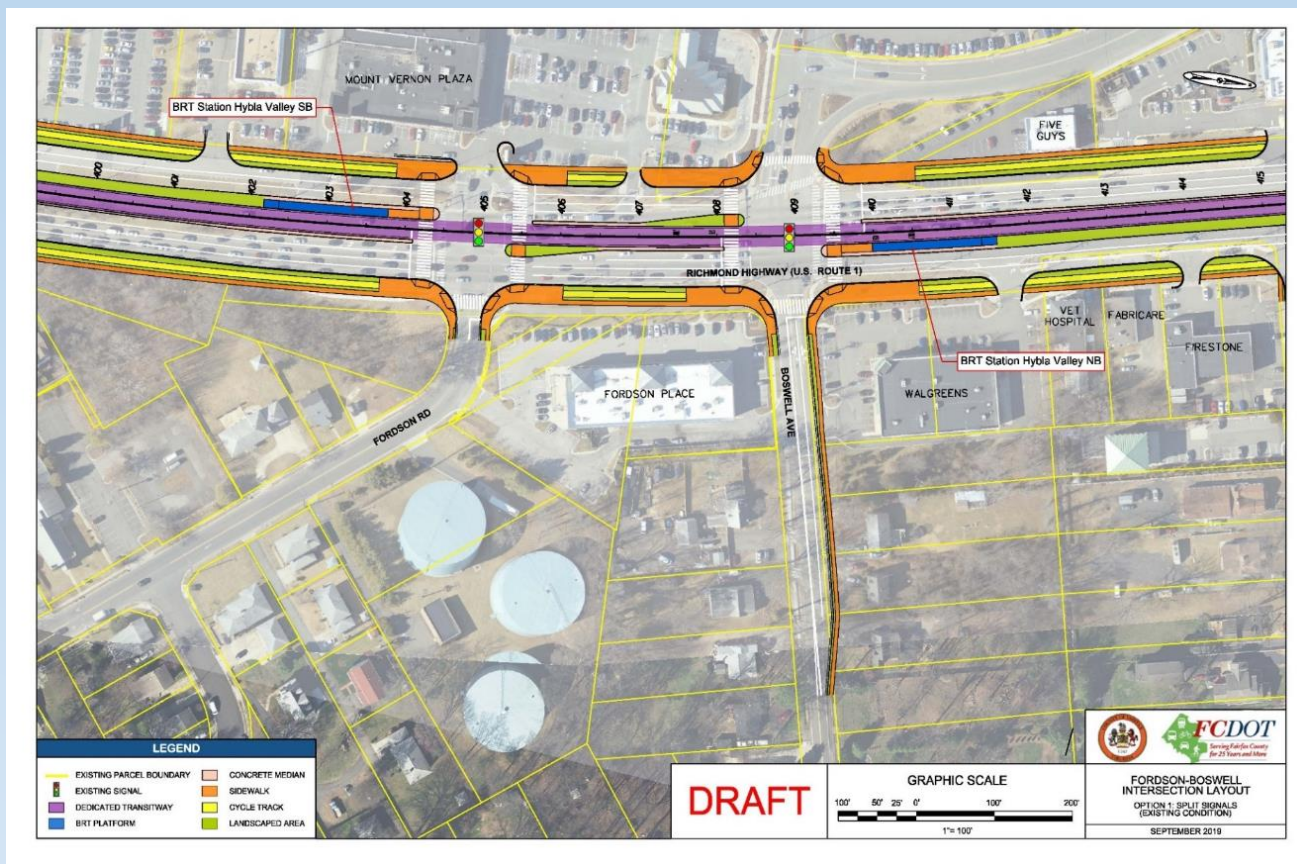


County of Fairfax, Virginia



Intersection of Fordson Road

- Requested information for Fordson Road was sent to committee January 2020
- Option B (shown to right)





Branding

- Refining brand family names and designs
- Next steps:
 - Present 8 new/enhanced family names and designs to Executive Committee at next meeting
 - Narrow down brand options to 2 or 3
 - Test brand options in focus groups
 - Provide broader community opportunity to offer input via online survey
 - Summarize results/present final brand options to Executive Committee





County of Fairfax, Virginia

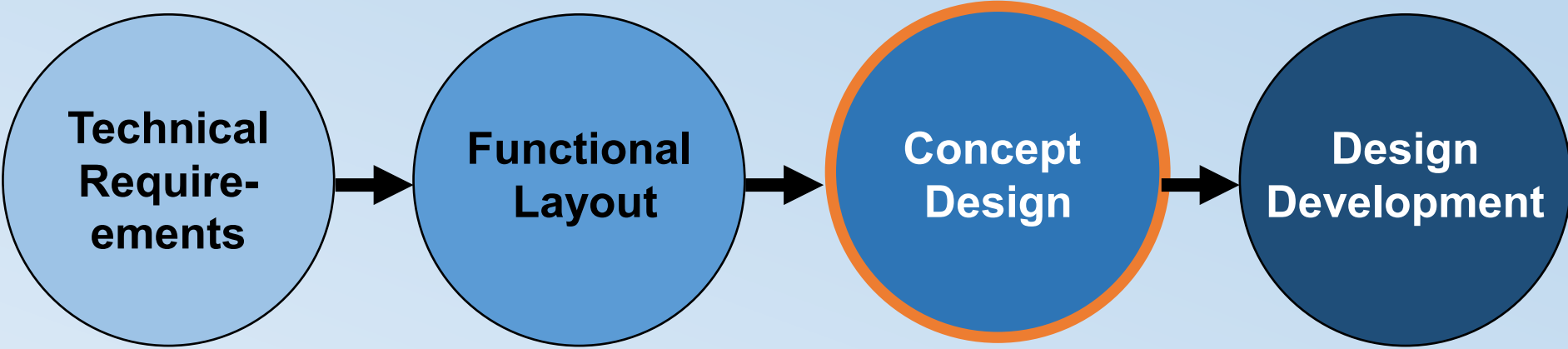
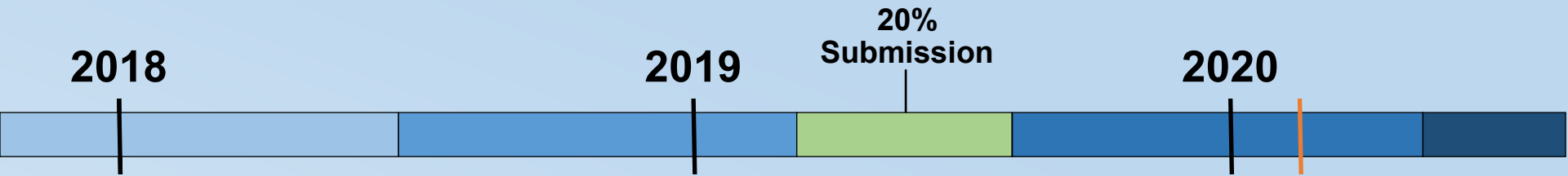
Station Architecture





County of Fairfax, Virginia

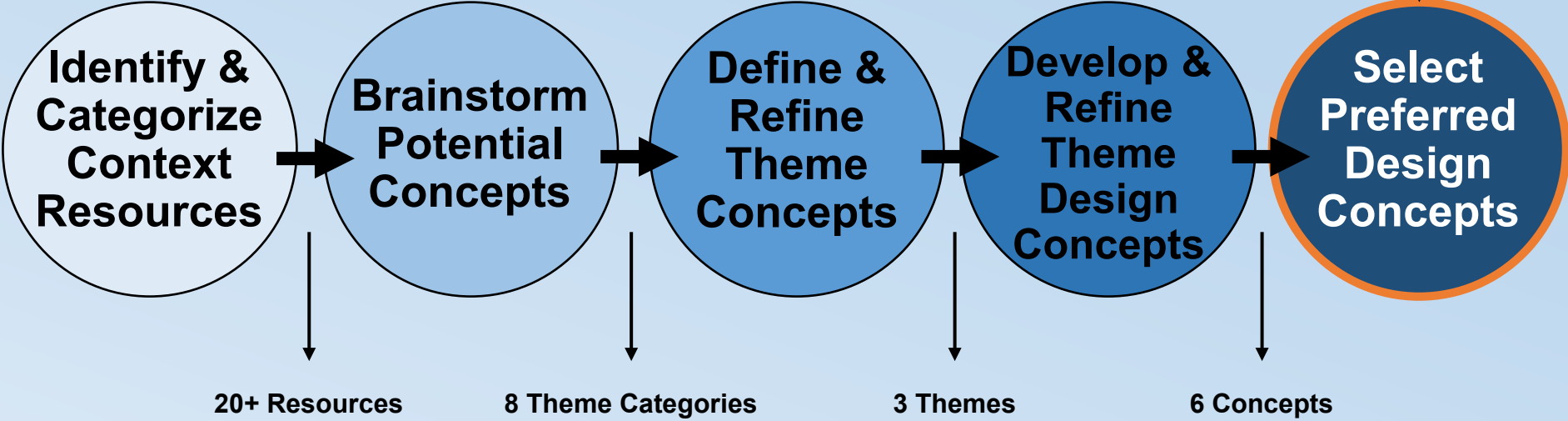
Design Progression





Contextual Station Concept Design Process

Executive Committee





County of Fairfax, Virginia

Identifying Context Resources

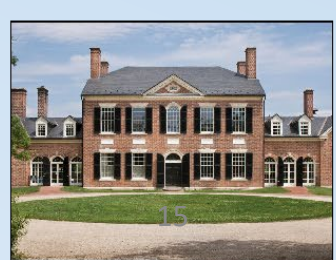
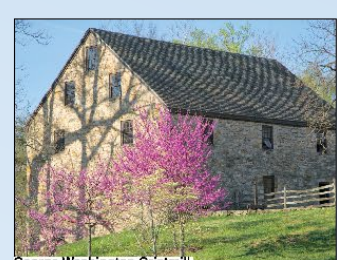
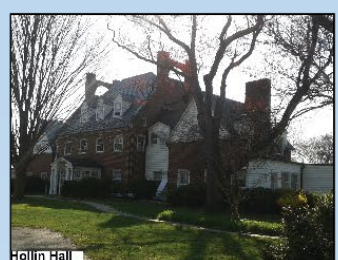




County of Fairfax, Virginia



Initial Context Resources



Historic Huntley House

Huntley Meadows Park

Hybla Valley Airport

Hollin Hill Mid-Century Modern Neighborhood

Hollin Hall

Gum Spring Museum

Bethlehem Baptist Church

Little Hunting Creek Park

Original Mt. Vernon High School

Mount Vernon

Woodlawn CBC

George Washington Gristmill

Woodlawn Plantation

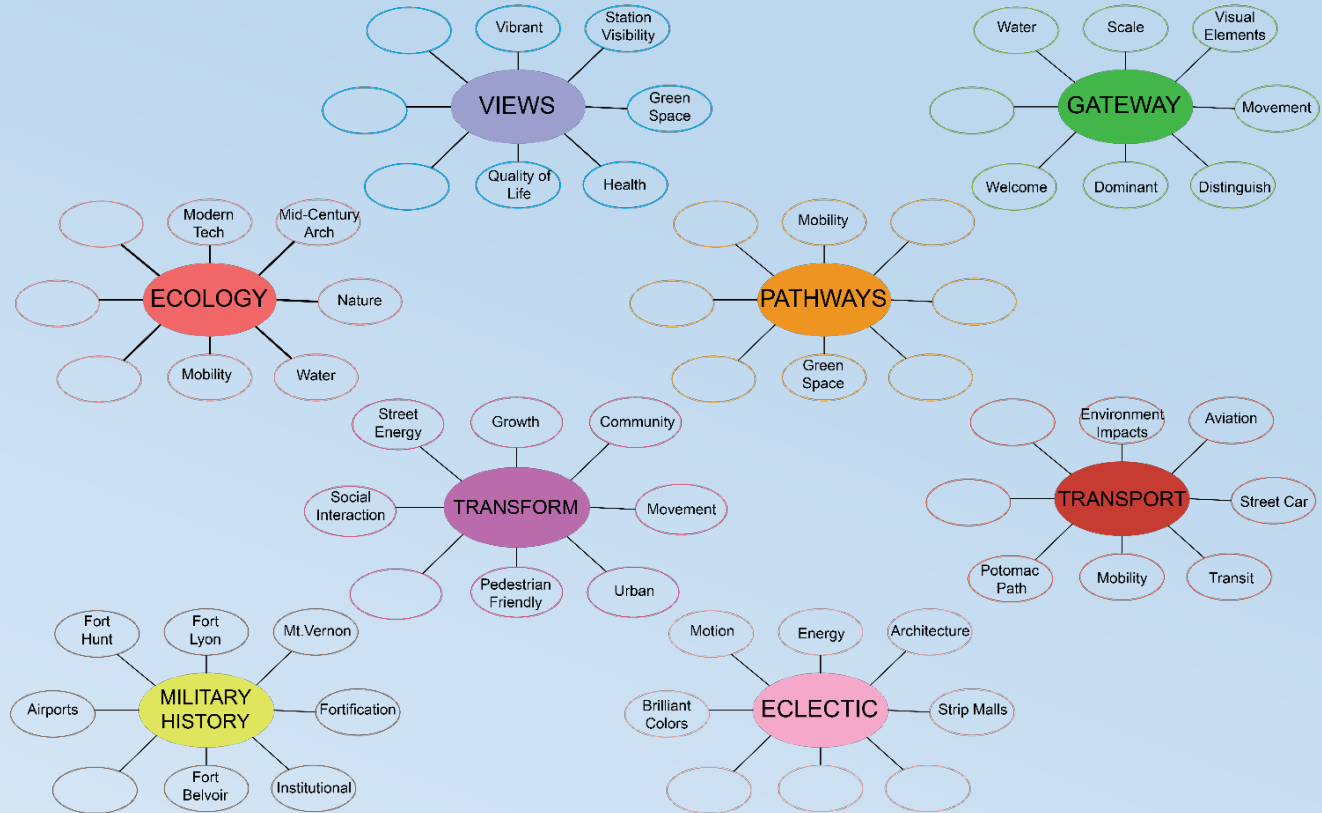
Pope-Leighey House

Fort Belvoir



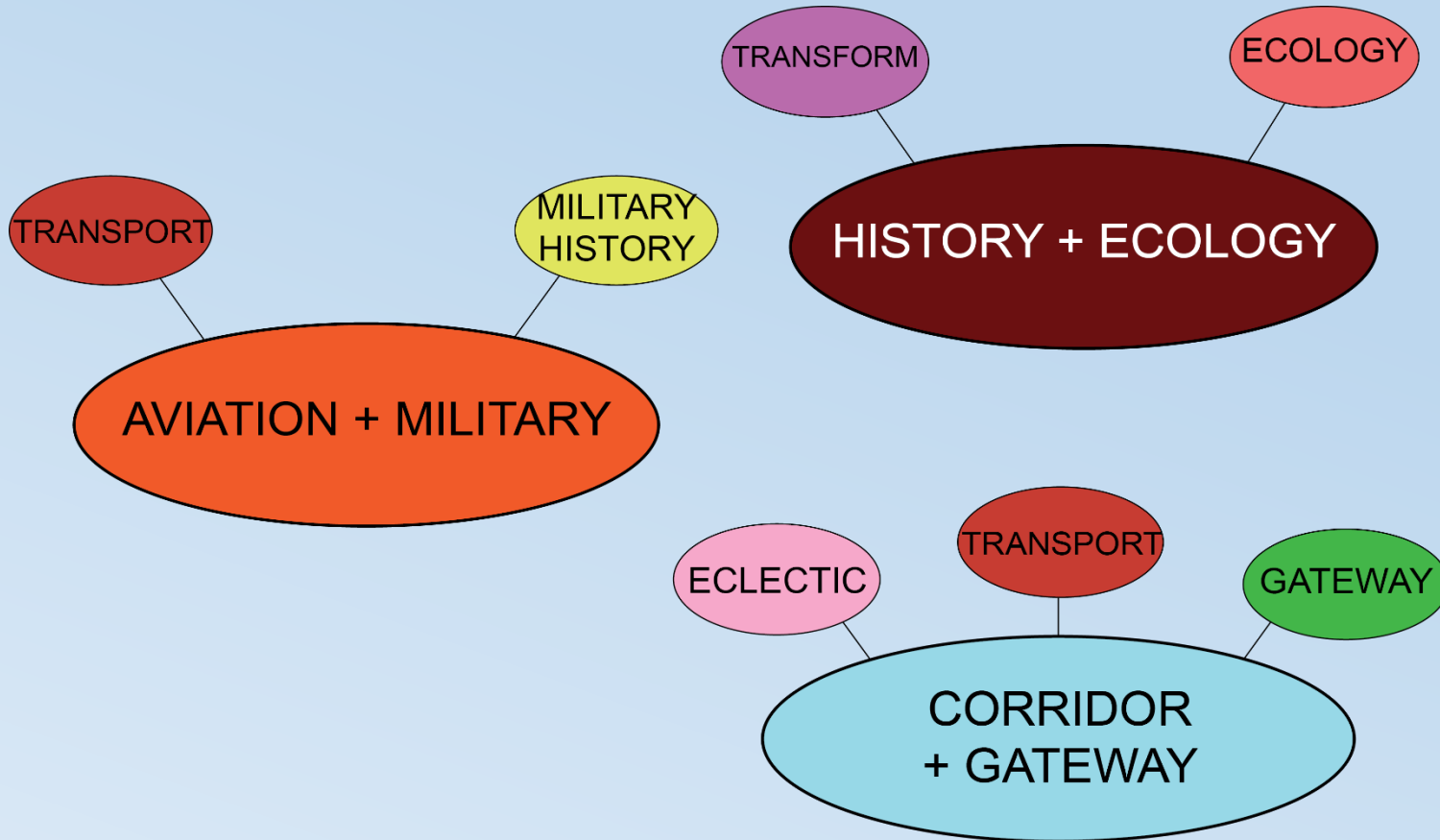
Categorize Resources and Brainstorm Potential Themes

RESOURCES	HISTORIC	ARCHITECTURAL	INSTITUTIONAL	NATURAL	CONTEXTUAL	UNIQUE	UNUSUAL	UNCOMMON
HUNTINGTON METRO STATION	x	x	x	x				
BEACON FIELD AIRPORT	x							
HISTORIC HUNTLEY HOUSE	x	x		x				
HUNTLEY MEADOWS PARK	x			x				
HYBLA VALLEY AIRPORT	x							
HOLLIN HILLS	x	x		x				
HOLLIN HALL	x	x						
GUM SPRINGS MUSEUM & CULTURAL CENTER	x							
BETHLEHEM BAPTIST CHURCH	x							
COLONEL JOHN R. BYERS / LITTLE HUNTING CREEK	x			x				
US ROUTE 1 WALL OF AVIATION	x							
ORIGINAL MOUNT VERNON HIGH SCHOOL	x	x			x			
MOUNT VERNON	x	x		x				
GEORGE WASHINGTON'S GRISTMILL	x	x		x				
WOODLAWN PLANTATION	x	x		x				
MOUNT VERNON SE CAR	x			x				
POPE LEIGHY HOUSE	x	x		x				
FORT BELVOIR			x					
CAMEDELL BLDG				x	x			
PENN DAW COMMUNITY BUSINESS CENTER	x				x		x	
BEACON/GROVETON CBC	x			x				
HYBLA VALLEY/GUM SPRINGS CBC	x	x		x				
WOODLAWN COMMUNITY BUSINESS CENTER	x	x		x				
MT VERNON TRAIL	x			x				
MIXED PAVE TRAILS				x				
GREENS FROM HUNLEY PK				x				
FOOT HUNT PARK				x				
LITTLE WAITING CREEK	x			x				
MARSH - DOVE RD	x			x				





Define Refined Themes





County of Fairfax, Virginia

Themes - Definitions

- **HISTORY + ECOLOGY** theme embodies the influence of Colonial transformation and the reintegration of the natural environment and represents how transit can play a role in the restoration of ecological balance.
- **AVIATION + MILITARY** theme honors local history through a focus on the role of flight, with its dynamic shapes and materials reflecting the ideals of movement and connection.
- **CORRIDOR + GATEWAY** theme captures the exuberance of the post-war era of transformation with simple (yet iconic) forms, diverse colors and bold lighting/signage.



Mount Vernon



Huntley Meadows Park



Beacon Field Airport (1940)



Aerona Model K



Mid-Century Modern House



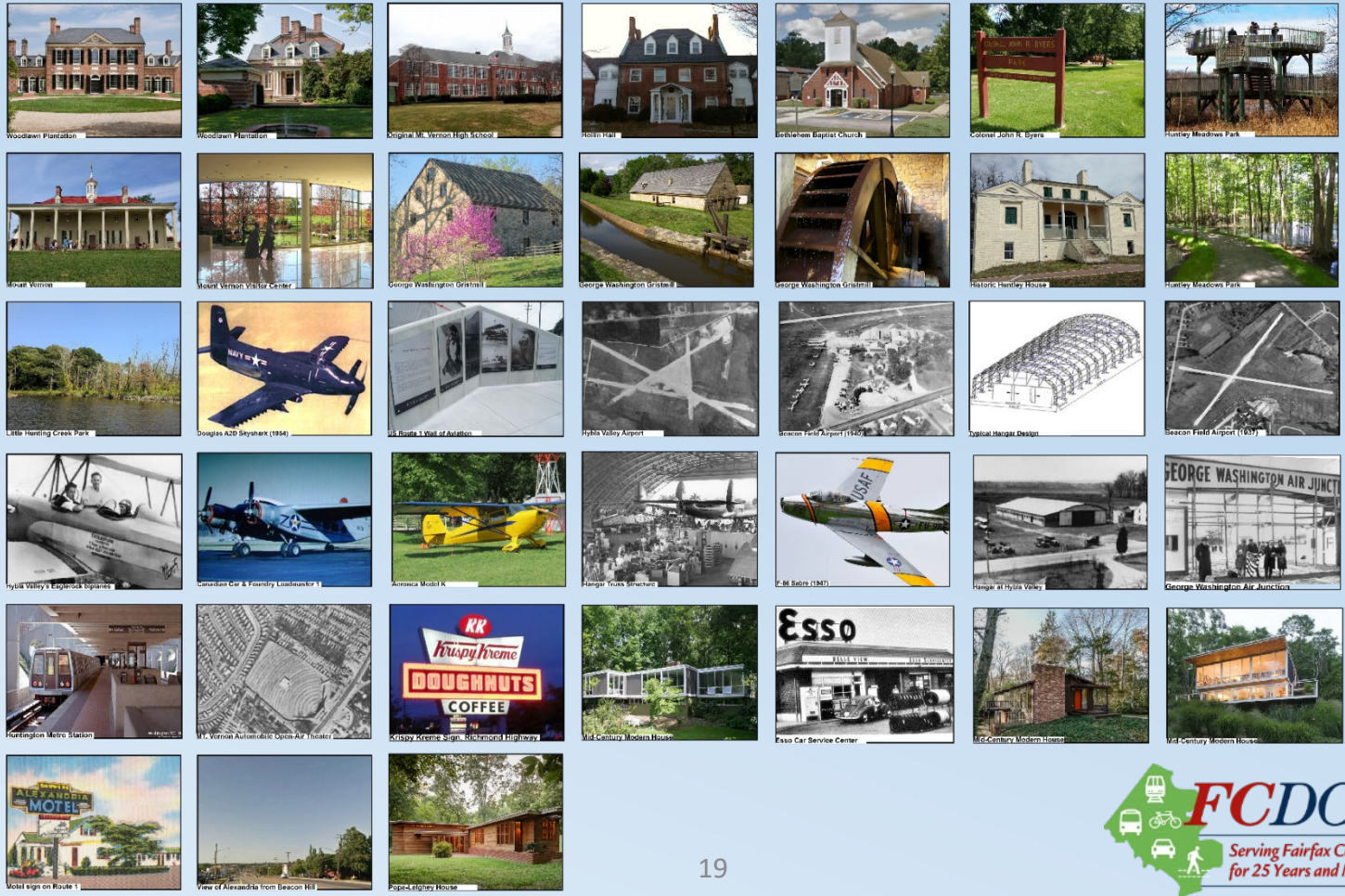
Krispy Kreme sign, Richmond Highway





County of Fairfax, Virginia

Expand Resources Based on Theme Development





County of Fairfax, Virginia



Exploration of Inspiration Images



for 25 feet and more





County of Fairfax, Virginia



Presentation of Design Themes at PIM 3





County of Fairfax, Virginia



Internal Exploration of Design Concepts





County of Fairfax, Virginia



Workshops on Design Concepts





County of Fairfax, Virginia

Refined Station Design Concepts





County of Fairfax, Virginia

Concept A





County of Fairfax, Virginia

RHBRT - Concept A





County of Fairfax, Virginia



RHBRT - Concept A





County of Fairfax, Virginia



RHBRT - Concept A





County of Fairfax, Virginia

RHBRT - Concept A





County of Fairfax, Virginia

RHBRT - Concept A





County of Fairfax, Virginia



RHBRT - Concept A





County of Fairfax, Virginia

RHBRT - Concept A





County of Fairfax, Virginia

Concept B





County of Fairfax, Virginia



RHBRT - Concept B





County of Fairfax, Virginia



RHBRT - Concept B





County of Fairfax, Virginia



RHBRT - Concept B





County of Fairfax, Virginia

RHBRT - Concept B





County of Fairfax, Virginia

RHBRT - Concept B





County of Fairfax, Virginia

RHBRT - Concept B1





County of Fairfax, Virginia



RHBRT - Concept B





County of Fairfax, Virginia

Concept C





County of Fairfax, Virginia

RHBRT - Concept C





County of Fairfax, Virginia



RHBRT - Concept C





County of Fairfax, Virginia

RHBRT - Concept C





County of Fairfax, Virginia



RHBRT - Concept C





County of Fairfax, Virginia



RHBRT - Concept C







County of Fairfax, Virginia

RHBRT - Concept C





County of Fairfax, Virginia

Concept D





County of Fairfax, Virginia

RHBRT - Concept D





County of Fairfax, Virginia

RHBRT - Concept D





County of Fairfax, Virginia



RHBRT - Concept D





County of Fairfax, Virginia

RHBRT - Concept D





County of Fairfax, Virginia

RHBRT - Concept D





County of Fairfax, Virginia



RHBRT - Concept D





County of Fairfax, Virginia

RHBRT - Concept D





County of Fairfax, Virginia

Concept E





County of Fairfax, Virginia

RHBRT - Concept E





County of Fairfax, Virginia

RHBRT - Concept E





County of Fairfax, Virginia

RHBRT - Concept E





County of Fairfax, Virginia

RHBRT - Concept E





County of Fairfax, Virginia

RHBRT - Concept E





County of Fairfax, Virginia



RHBRT - Concept E





County of Fairfax, Virginia

RHBRT - Concept E





County of Fairfax, Virginia

Concept F





County of Fairfax, Virginia

RHBRT - Concept F





County of Fairfax, Virginia



RHBRT - Concept F





County of Fairfax, Virginia



RHBRT - Concept F





County of Fairfax, Virginia



RHBRT - Concept F





County of Fairfax, Virginia

RHBRT - Concept F





County of Fairfax, Virginia

RHBRT - Concept F





County of Fairfax, Virginia

RHBRT - Concept F





County of Fairfax, Virginia



RHBRT - Concept A



RHBRT - Concept B



RHBRT - Concept C



RHBRT - Concept D



RHBRT - Concept E



RHBRT - Concept F





County of Fairfax, Virginia

Discussion





County of Fairfax, Virginia

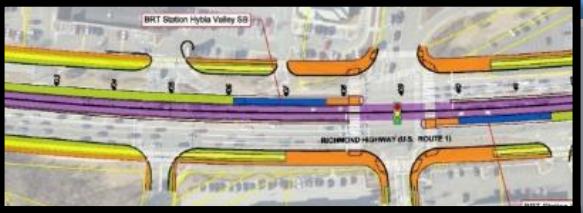



Back Up Slides





County of Fairfax, Virginia

Summary of Fordson Road Options

Fordson Road Options	Maintains Access to Fordson	Within 178' Footprint	Typical Station Platform Location	Approx. additional ROW (includes taper lengths)	Approx. linear distance of widening
 <p>A</p>	NO	YES	YES	0	0
 <p>B</p>	YES	YES	NO	0	0
 <p>C</p>	YES	NO (additional ROW req'd)	NO	16,285 sf (avg. of approximately 8' of additional widening)	2,000 ft
 <p>D</p>	YES	NO (additional ROW req'd)	YES	14,596 sf (avg. of approximately 7.5' of additional widening)	1,900 ft



County of Fairfax, Virginia

Walking/Biking Shed Areas for Hybla Valley Station

