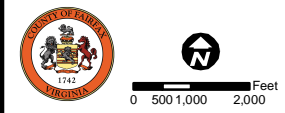
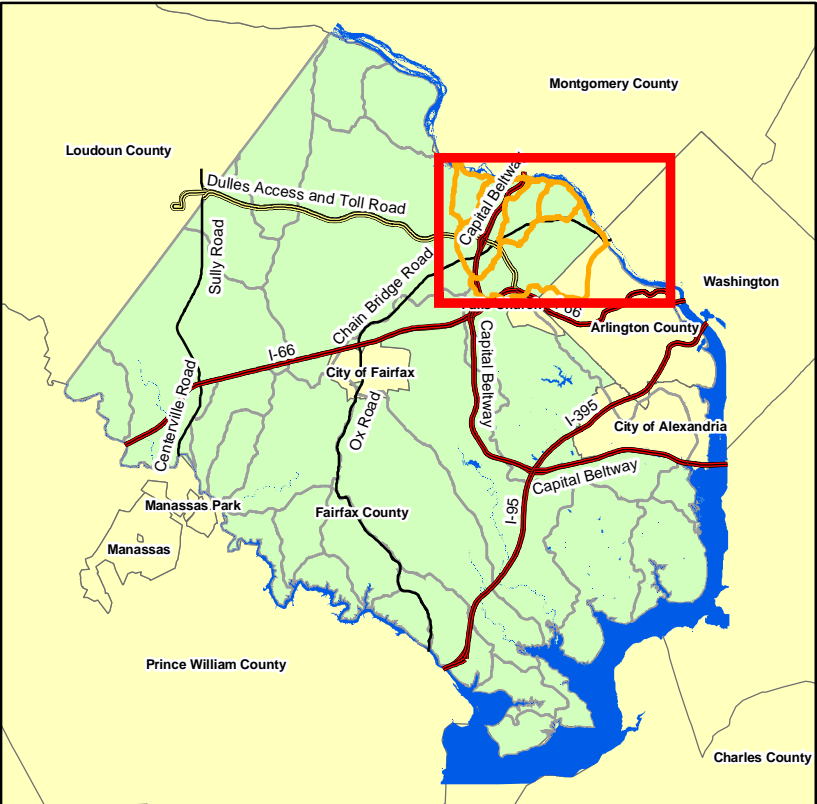
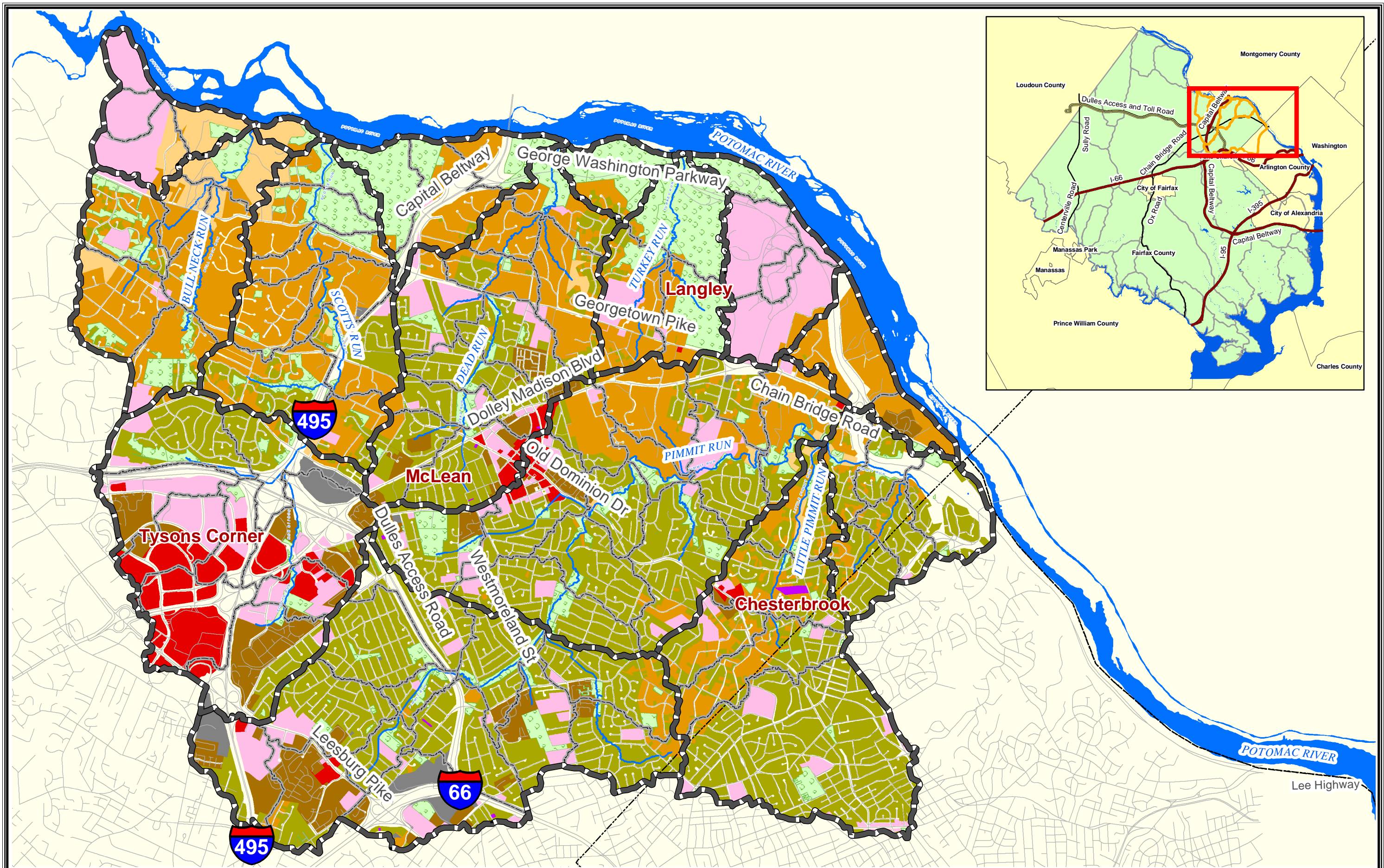


- | | | | | | |
|------------|------------------------|----------------------------|---------------------------|--------------------------|------------|
| Watersheds | Creeks/Streams | Current Land Use | Estate Residential | High Density Residential | Industrial |
| Roads | Arlington County Limit | Open Space | Low Density Residential | Low Intensity Commercial | Unknown |
| Water | | Medium Density Residential | High Intensity Commercial | Vacant | |

*Note: This map is for watershed planning purposes only.
Source: Fairfax County's 2002 Land Use GIS Layer.

Map 2.2
Middle Potomac Watersheds
Current Land Use

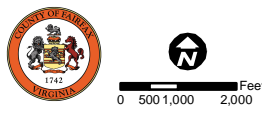
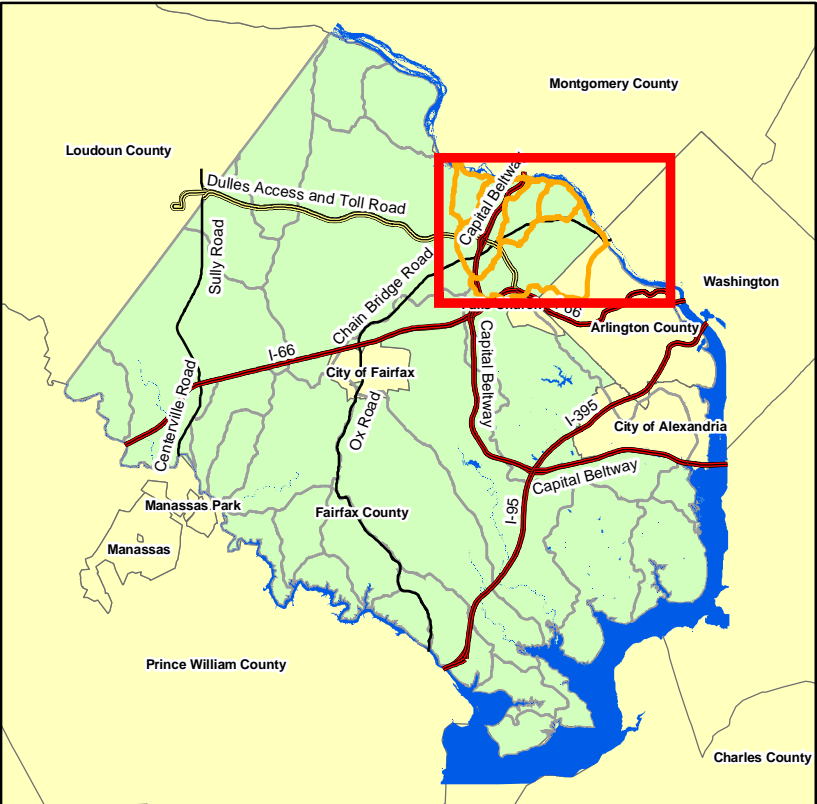
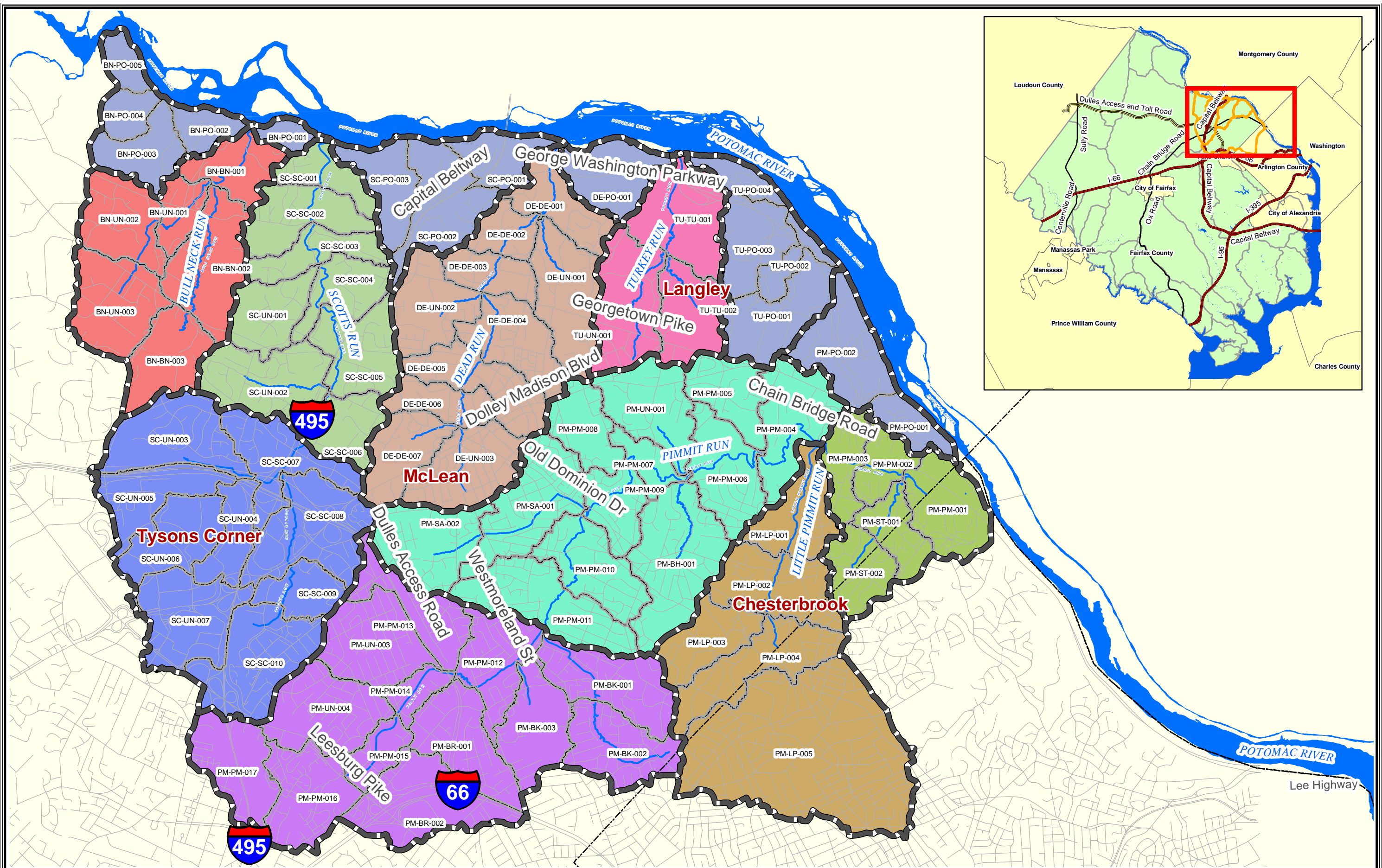


Watersheds
 Roads
 Water
 Creeks/Streams
 Arlington County Limit





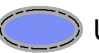
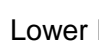
Future Land Use
 Open Space
 Estate Residential
 Low Density Residential
 Medium Density Residential
 High Density Residential
 Low Intensity Commercial
 High Intensity Commercial
 Industrial
 Unknown
 Other

*Note: This map is for watershed planning purposes only. Source: Fairfax County's 2002 Land Use GIS Layer.

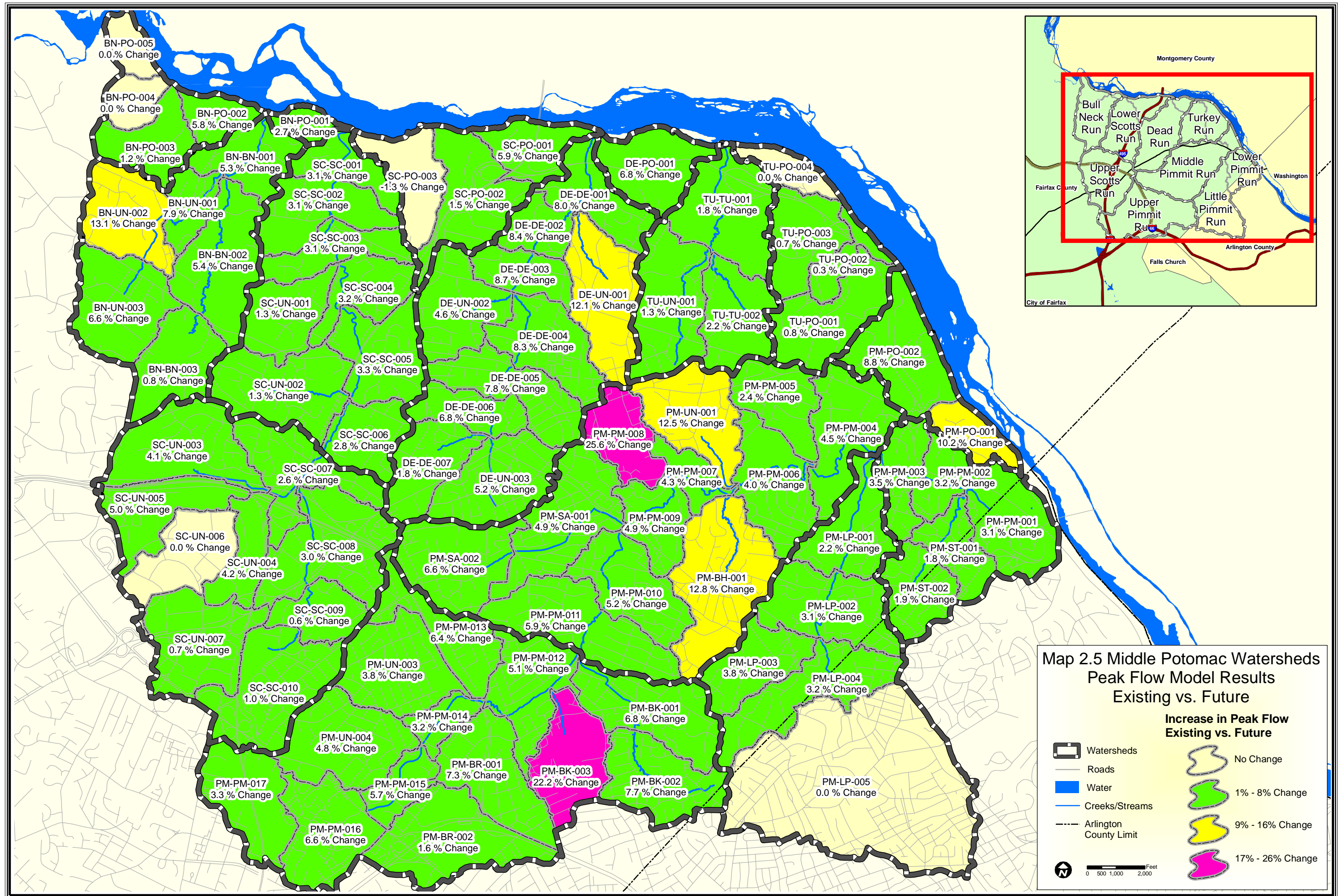
Map 2.3
Middle Potomac Watersheds
Future Land Use



Watershed Names

-  Potomac River Tributaries
-  Lower Scotts Run
-  Dead Run
-  Middle Pimmit Run
-  Little Pimmit Run
-  Bull Neck Run
-  Upper Scotts Run
-  Turkey Run
-  Upper Pimmit Run
-  Lower Pimmit Run

Map 2.4
Middle Potomac Watersheds
Subasins



BN-PO-005
0.0% Change

BN-PO-004
0.0% Change

BN-PO-002
5.8% Change

BN-PO-001
2.7% Change

BN-PO-003
1.2% Change

BN-BN-001
5.3% Change

SC-SC-001
3.1% Change

SC-PO-003
-1.3% Change

SC-PO-001
5.9% Change

DE-PO-001
6.8% Change

TU-PO-004
0.0% Change

BN-UN-002
13.1% Change

BN-UN-001
7.9% Change

SC-SC-002
3.1% Change

SC-PO-002
1.5% Change

DE-DE-001
8.0% Change

TU-TU-001
1.8% Change

BN-BN-002
5.4% Change

SC-SC-003
3.1% Change

DE-DE-002
8.4% Change

DE-UN-001
12.1% Change

TU-UN-001
1.3% Change

TU-PO-003
0.7% Change

TU-PO-002
0.3% Change

BN-UN-003
6.6% Change

BN-BN-003
0.8% Change

SC-UN-001
1.3% Change

SC-SC-004
3.2% Change

DE-UN-002
4.6% Change

DE-DE-003
8.7% Change

TU-UN-001
1.3% Change

TU-TU-002
2.2% Change

TU-PO-001
0.8% Change

SC-UN-003
4.1% Change

SC-UN-002
1.3% Change

SC-SC-005
3.3% Change

DE-DE-004
8.3% Change

DE-DE-005
7.8% Change

PM-UN-001
12.5% Change

PM-PM-005
2.4% Change

PM-PO-002
8.8% Change

SC-UN-005
5.0% Change

SC-UN-006
0.0% Change

SC-SC-006
2.8% Change

DE-DE-006
6.8% Change

DE-DE-007
1.8% Change

PM-PM-008
25.6% Change

PM-UN-001
12.5% Change

PM-PM-004
4.5% Change

PM-PO-001
10.2% Change

SC-UN-004
4.2% Change

SC-SC-007
2.6% Change

DE-UN-003
5.2% Change

PM-SA-001
4.9% Change

PM-PM-007
4.3% Change

PM-PM-009
4.9% Change

PM-PM-006
4.0% Change

PM-PM-003
3.5% Change

PM-PM-002
3.2% Change

SC-UN-007
0.7% Change

SC-SC-008
3.0% Change

PM-SA-002
6.6% Change

PM-PM-010
5.2% Change

PM-BH-001
12.8% Change

PM-LP-001
2.2% Change

PM-ST-001
1.8% Change

SC-UN-004
4.2% Change

SC-SC-009
0.6% Change

PM-PM-013
6.4% Change

PM-PM-011
5.9% Change

PM-PM-010
5.2% Change

PM-BH-001
12.8% Change

PM-LP-002
3.1% Change

PM-ST-002
1.9% Change

SC-UN-007
0.7% Change

SC-SC-010
1.0% Change

PM-UN-003
3.8% Change

PM-PM-012
5.1% Change

PM-PM-010
5.2% Change

PM-LP-003
3.8% Change

PM-LP-004
3.2% Change

PM-PM-017
3.3% Change

PM-UN-004
4.8% Change

PM-PM-014
3.2% Change

PM-BK-001
6.8% Change

PM-BK-003
22.2% Change

PM-BK-002
7.7% Change

PM-PM-017
3.3% Change

PM-PM-015
5.7% Change

PM-BR-001
7.3% Change

PM-BK-003
22.2% Change

PM-BK-002
7.7% Change

PM-PM-016
6.6% Change

PM-PM-016
6.6% Change

PM-BR-002
1.6% Change

PM-LP-005
0.0% Change

