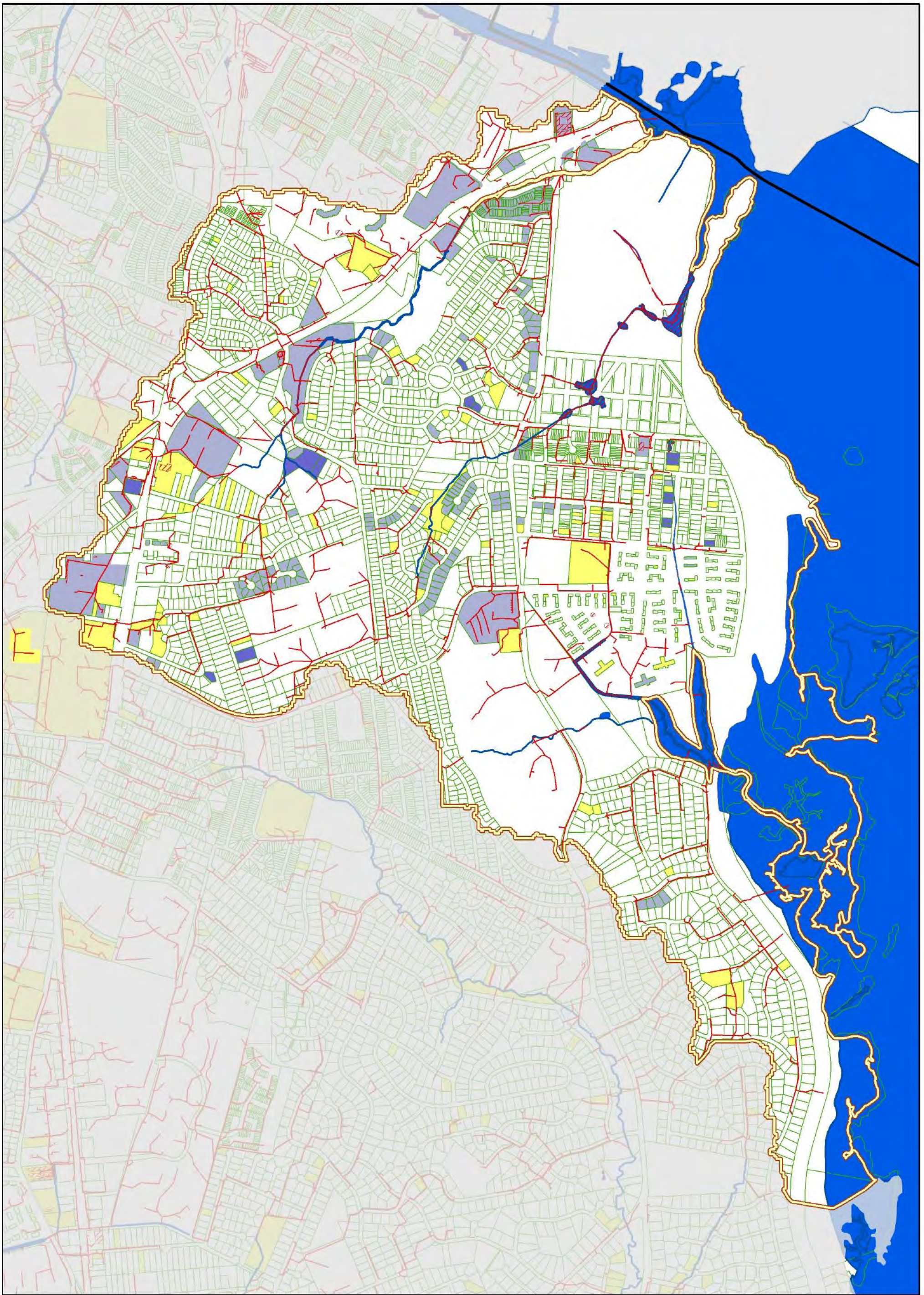


- Watershed Boundary
- Subwatershed Boundary
- Lakes and Ponds
- Streams

- Existing Total Suspended Solids Load**
- No Data
 - High
 - Low
 - Very High
 - Moderate

Map 16

TSS Loading Map
Four Mile Run Watershed



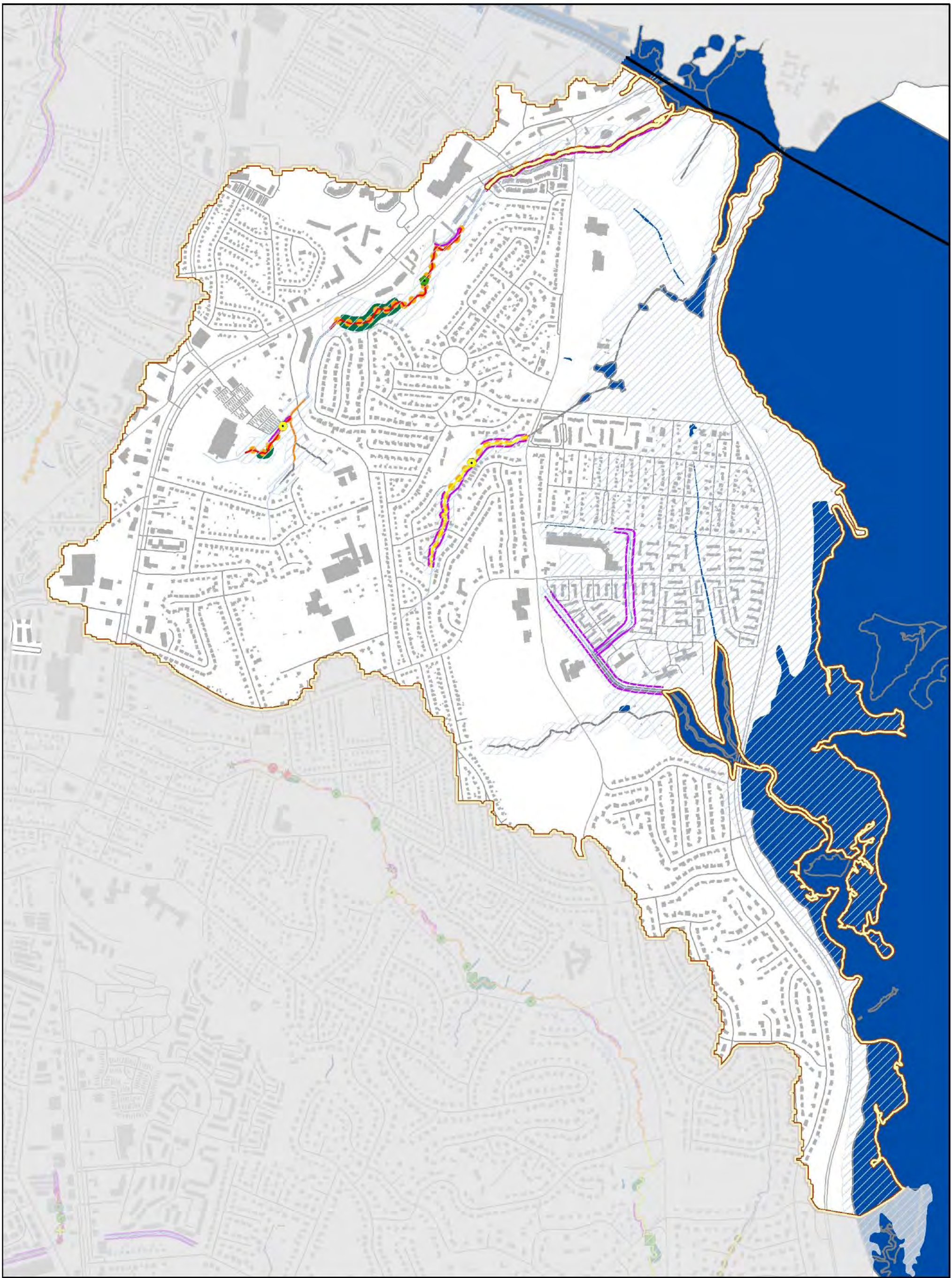
0 0.125 0.25
Miles

- WMA Boundary
- 303d Listed Streams
- Stormwater Facilities
- Stormwater Pipes
- Parcels
- MSMD Flooding/Drainage Complaints
- Public Identified Problem Areas 2003 - 2006

- Regional Ponds**
- Constructed
- Planned
- BMP Control Type**
- Quantity and Quality
- Quantity

Map 17
Stormwater
Infrastructure
Map

Belle Haven Watershed



Stream Condition Map

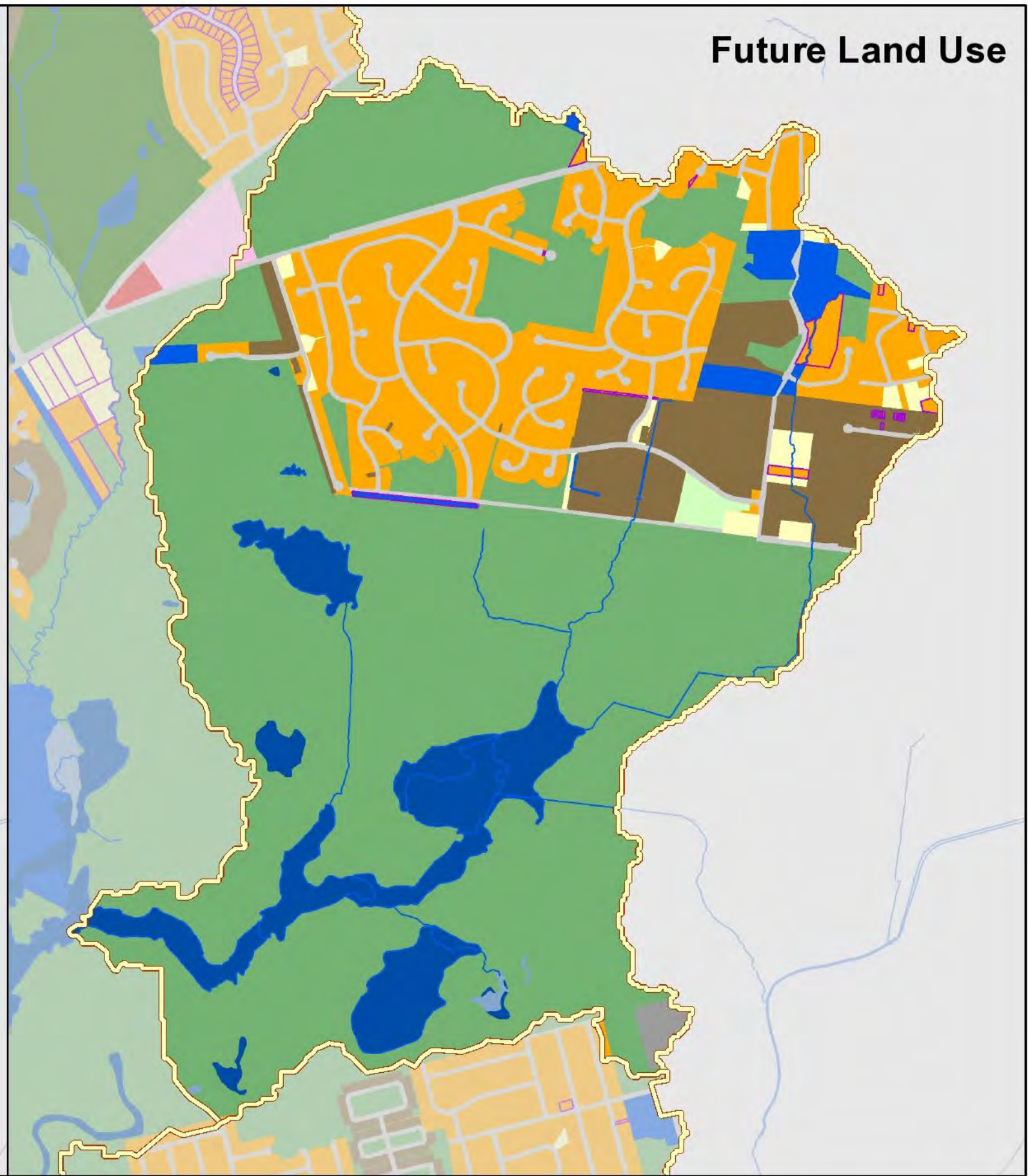
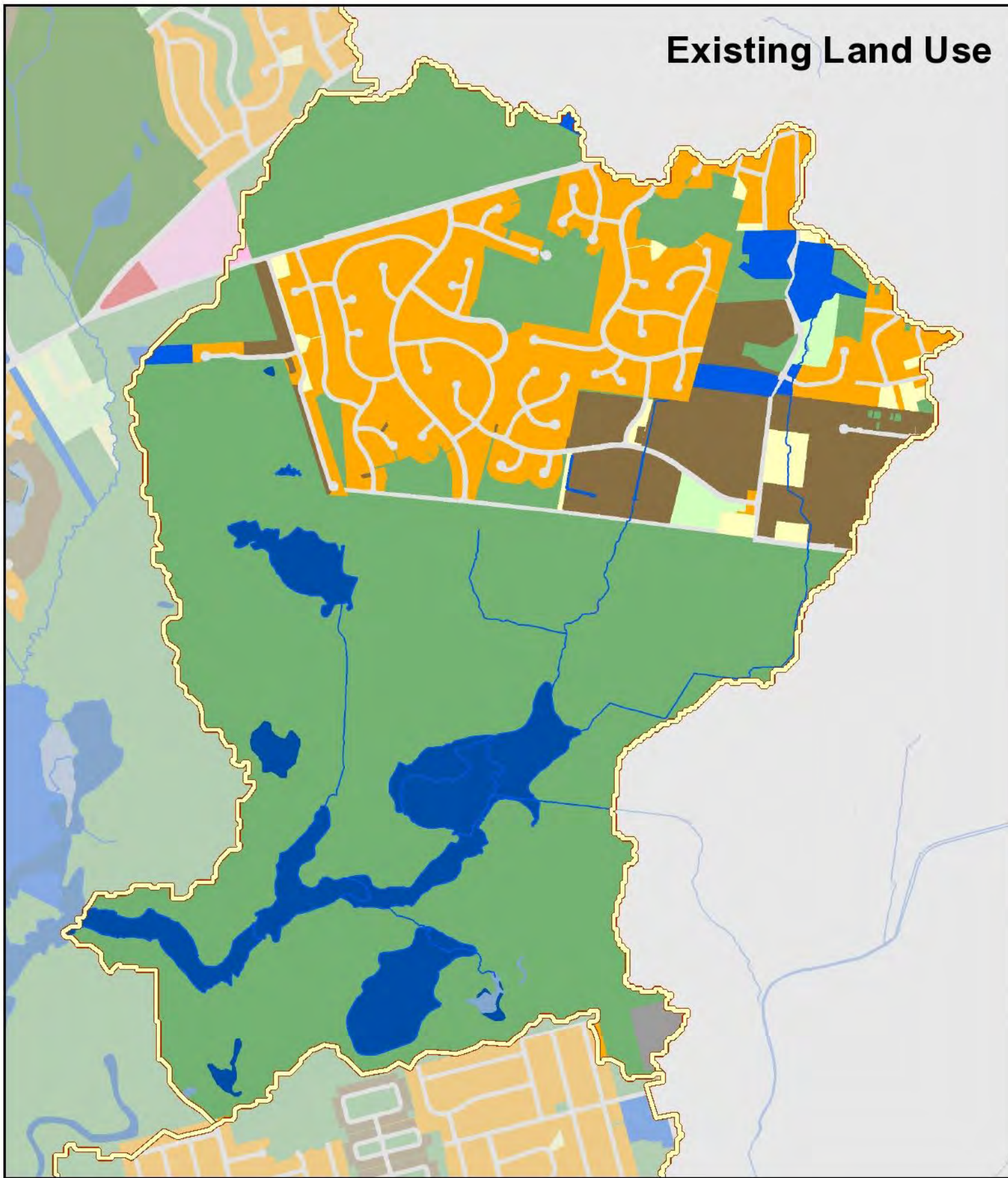
<p>Obstruction Impact</p> <ul style="list-style-type: none"> ● Minor to Moderate ● Moderate to Severe ● Severe to Extreme 	<p>Head Cut Height</p> <ul style="list-style-type: none"> ▲ 0.5' - 1.0' ▲ 1' - 2' ▲ >2' 	<p>Ditch Impact</p> <ul style="list-style-type: none"> ■ Minor to Moderate ■ Moderate to Severe ■ Severe to Extreme 	<p>Crossing Impact</p> <ul style="list-style-type: none"> ✚ Minor to Moderate ✚ Moderate to Severe ✚ Severe to Extreme
<p>Dump Site Impact</p> <ul style="list-style-type: none"> ★ Minor to Moderate ★ Moderate to Severe ★ Severe to Extreme 	<p>Pipe Impact</p> <ul style="list-style-type: none"> ● Minor to Moderate ● Moderate to Severe ● Severe to Extreme 	<p>Utility Impact</p> <ul style="list-style-type: none"> ● Minor to Moderate ● Moderate to Severe ● Severe to Extreme 	<p>▨ Resource Protection Area (RPA)</p> <p>— Deficient Buffer</p> <p>— Erosion</p> <p>— Lakes and Ponds</p>
<p>Habitat Rating</p> <ul style="list-style-type: none"> — Excellent — Good — Fair — Poor — Very Poor — Unassessed 	<p>CEM Category</p> <ul style="list-style-type: none"> ● CEM 2 - Incising ● CEM 3 - Widening 		



0 0.125 0.25 Miles

Existing Land Use

Future Land Use

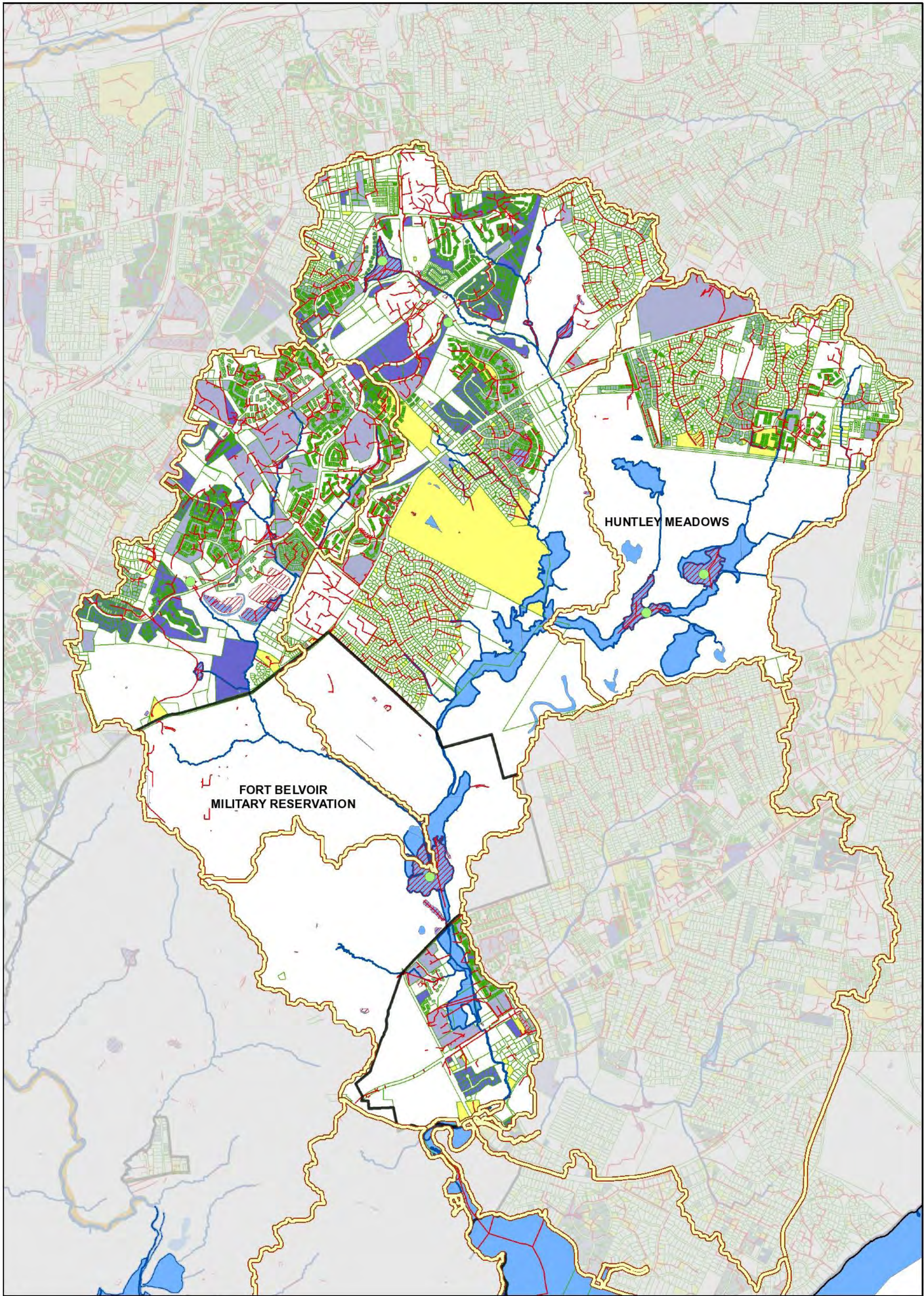


Land Use

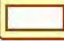






- | | | | | |
|--------------------|---------------------------|--------------------------|----------------------------|--------------------|
| Estate Residential | High Density Residential | Institutional | Medium Density Residential | Water |
| City of Fairfax | High Intensity Commercial | Low Density Residential | Open Space | WMA Boundary |
| Golf Course | Industrial | Low Intensity Commercial | Transportation | Change in Land Use |

Map 19

Land Use Map
Dogue Creek Watershed
Barnyard Run



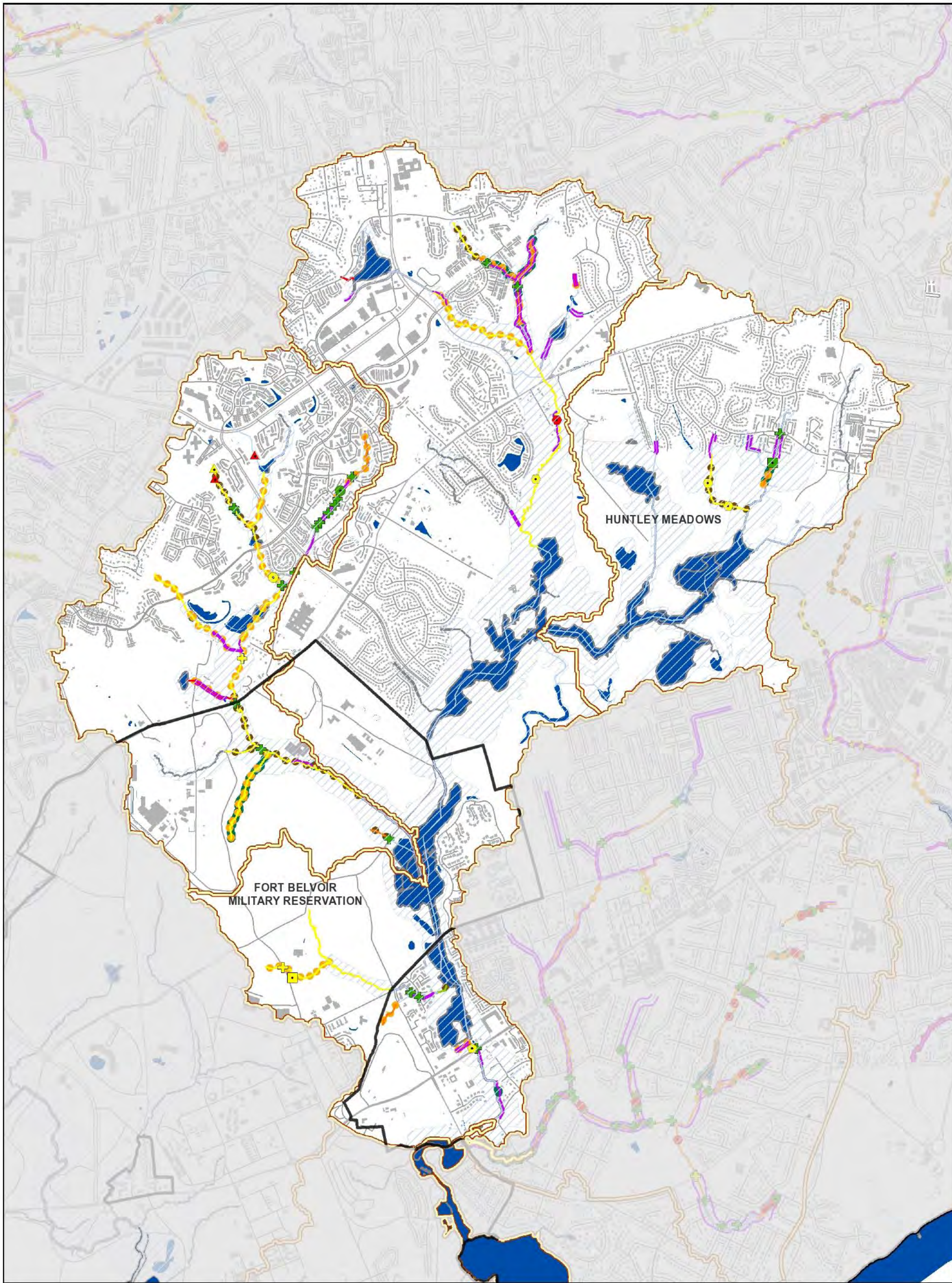
0 0.25 0.5 Miles

-  WMA Boundary
-  303d Listed Streams
-  Stormwater Facilities
-  Stormwater Pipes
-  Parcels
-  MSMD Flooding/Drainage Complaints
-  Public Identified Problem Areas 2003 - 2006

- Regional Ponds**
-  Constructed
-  Planned (no facilities)
- BMP Control Type**
-  Quantity and Quality
-  Quantity

Map 20
Stormwater
Infrastructure Map

Dogue Creek Watershed
 Piney Run WMA
 Dogue Creek Mainstem WMA
 Barnyard Run WMA



0 0.25 0.5 Miles

- Obstruction Impact**
- Minor to Moderate
 - Moderate to Severe
 - Severe to Extreme
- Dump Site Impact**
- ★ Minor to Moderate
 - ★ Moderate to Severe
 - ★ Severe to Extreme
- Habitat Rating**
- Excellent
 - Fair
 - Good
 - Very Poor
 - Poor
 - Unassessed

- Head Cut Height**
- ▲ 0.5' - 1.0'
 - ▲ 1' - 2'
 - ▲ >2'
- Pipe Impact**
- Minor to Moderate
 - Moderate to Severe
 - Severe to Extreme

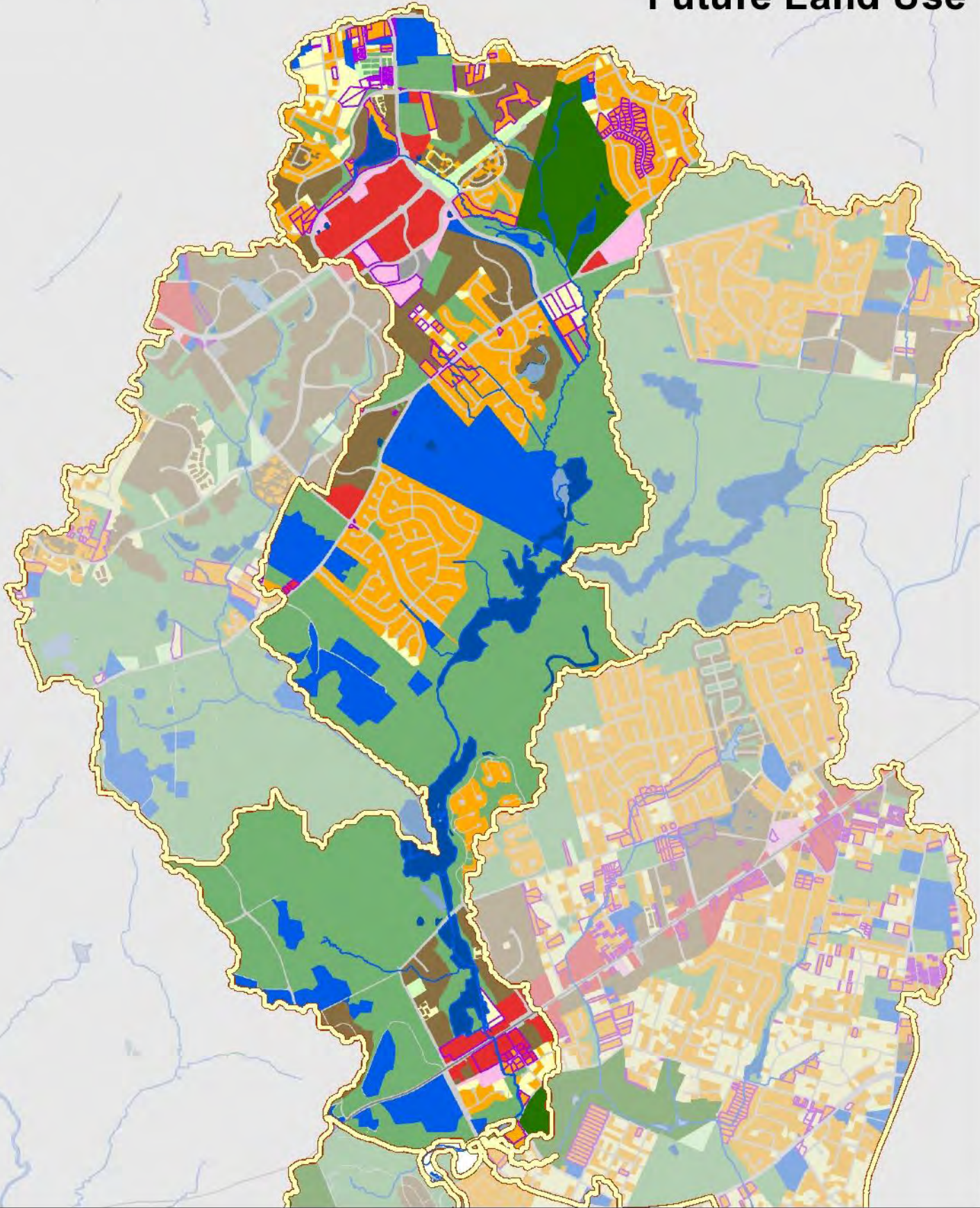
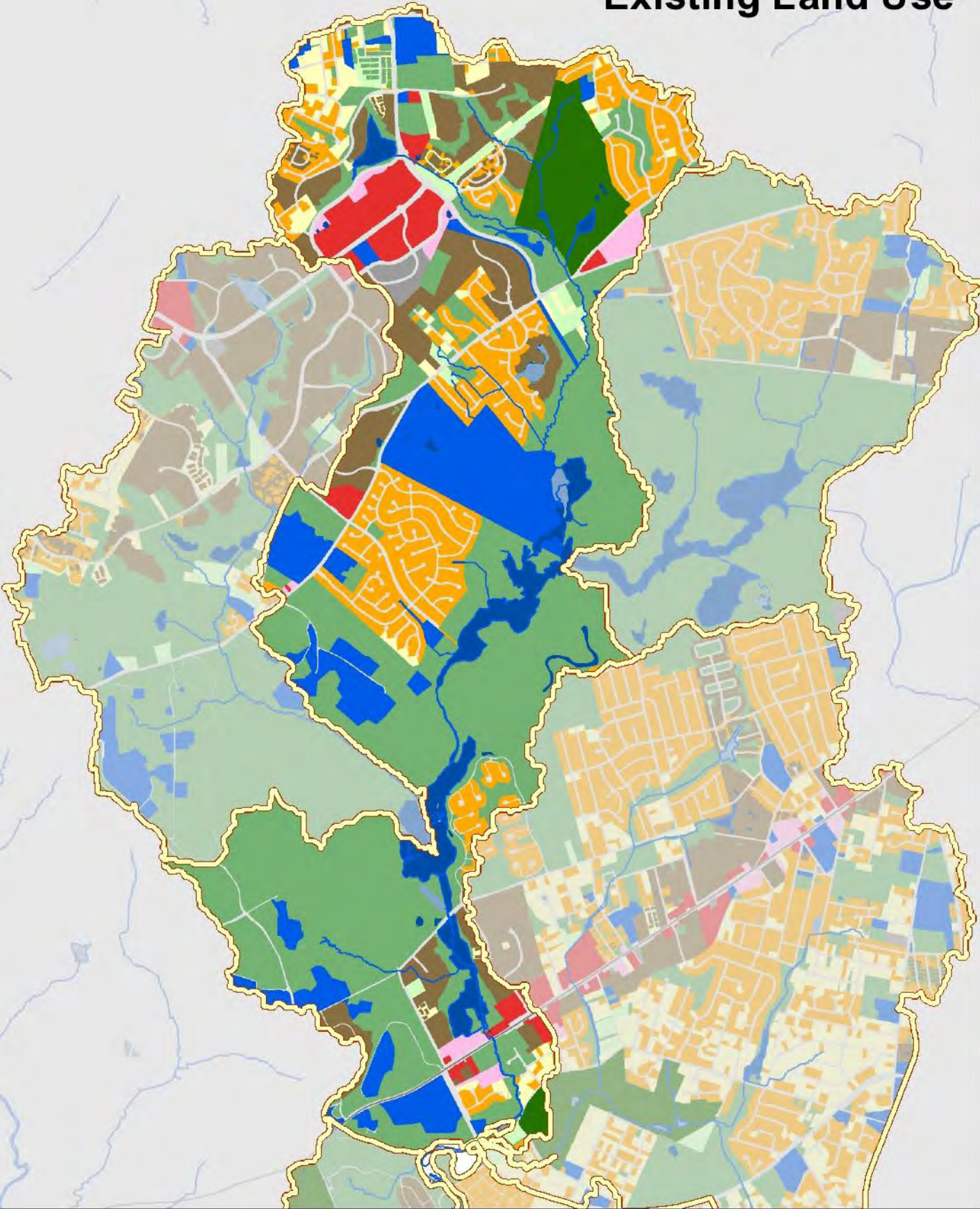
- Ditch Impact**
- Minor to Moderate
 - Moderate to Severe
 - Severe to Extreme
- Utility Impact**
- Minor to Moderate
 - Moderate to Severe
 - Severe to Extreme
- CEM Category**
- CEM 2 - Incising
 - CEM 3 - Widening

- Crossing Impact**
- ✚ Minor to Moderate
 - ✚ Moderate to Severe
 - ✚ Severe to Extreme
- ▨ Resource Protection Area (RPA)
 - Deficient Buffer
 - Erosion
 - Lakes and Ponds

Map 21
Stream Condition Map
 Dogue Creek Watershed
 Piney Run WMA
 Dogue Creek Mainstem WMA
 Barnyard Run WMA

Existing Land Use

Future Land Use



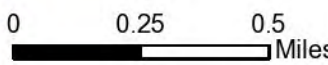


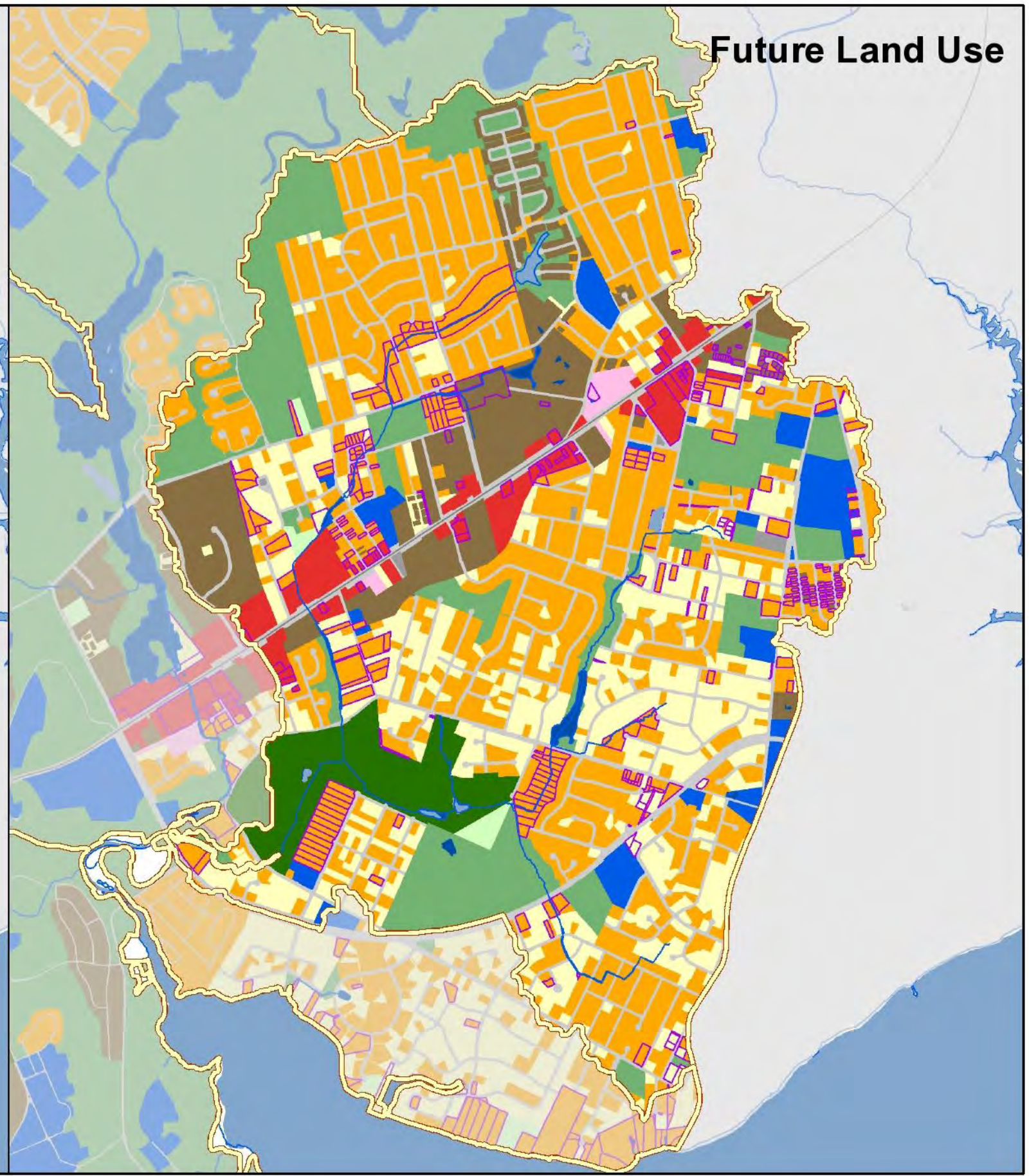
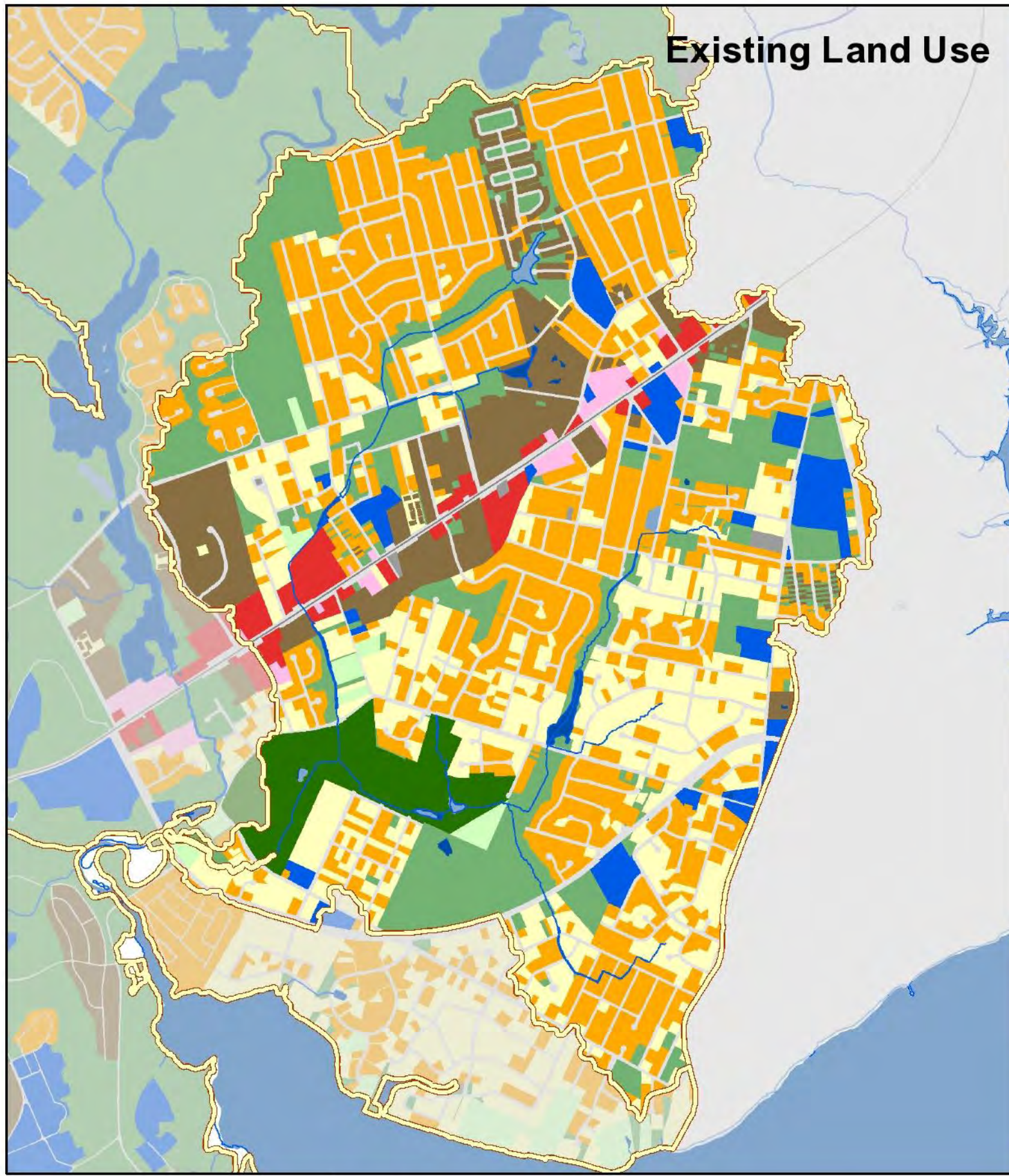
0 0.25 0.5
Miles

Land Use


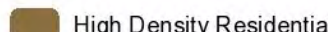



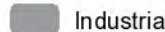
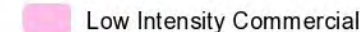
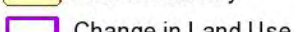
- | | | | | |
|--------------------|---------------------------|--------------------------|----------------------------|--------------------|
| Estate Residential | High Density Residential | Institutional | Medium Density Residential | Water |
| City of Fairfax | High Intensity Commercial | Low Density Residential | Open Space | WMA Boundary |
| Golf Course | Industrial | Low Intensity Commercial | Transportation | Change in Land Use |

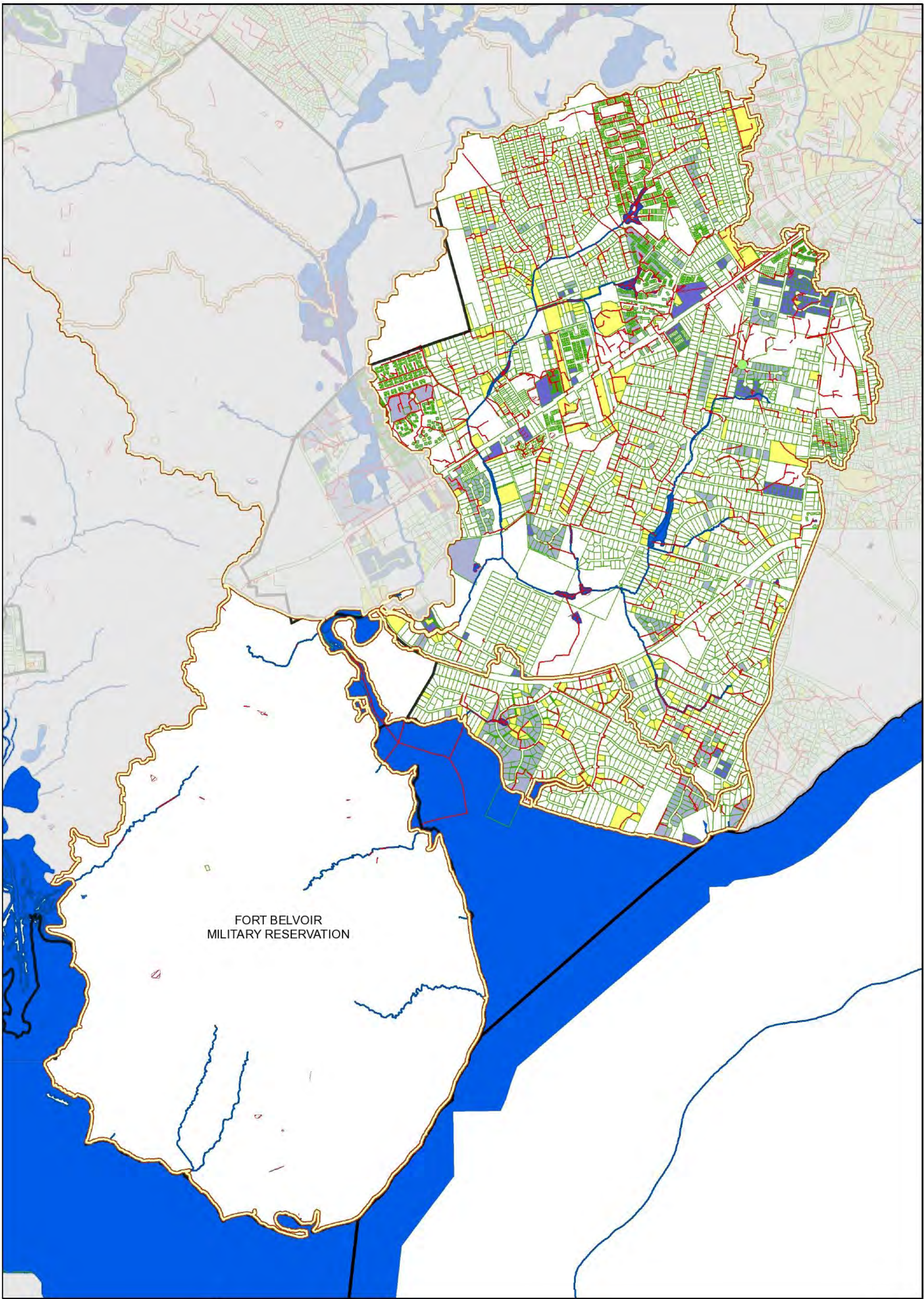
Existing Land Use

Future Land Use



0 0.25 0.5 Miles

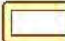






Land Use					
 Estate Residential	 High Density Residential	 Institutional	 Medium Density Residential	 Water	
 City of Fairfax	 High Intensity Commercial	 Low Density Residential	 Open Space	 WMA Boundary	
 Golf Course	 Industrial	 Low Intensity Commercial	 Transportation	 Change in Land Use	



FORT BELVOIR
MILITARY RESERVATION



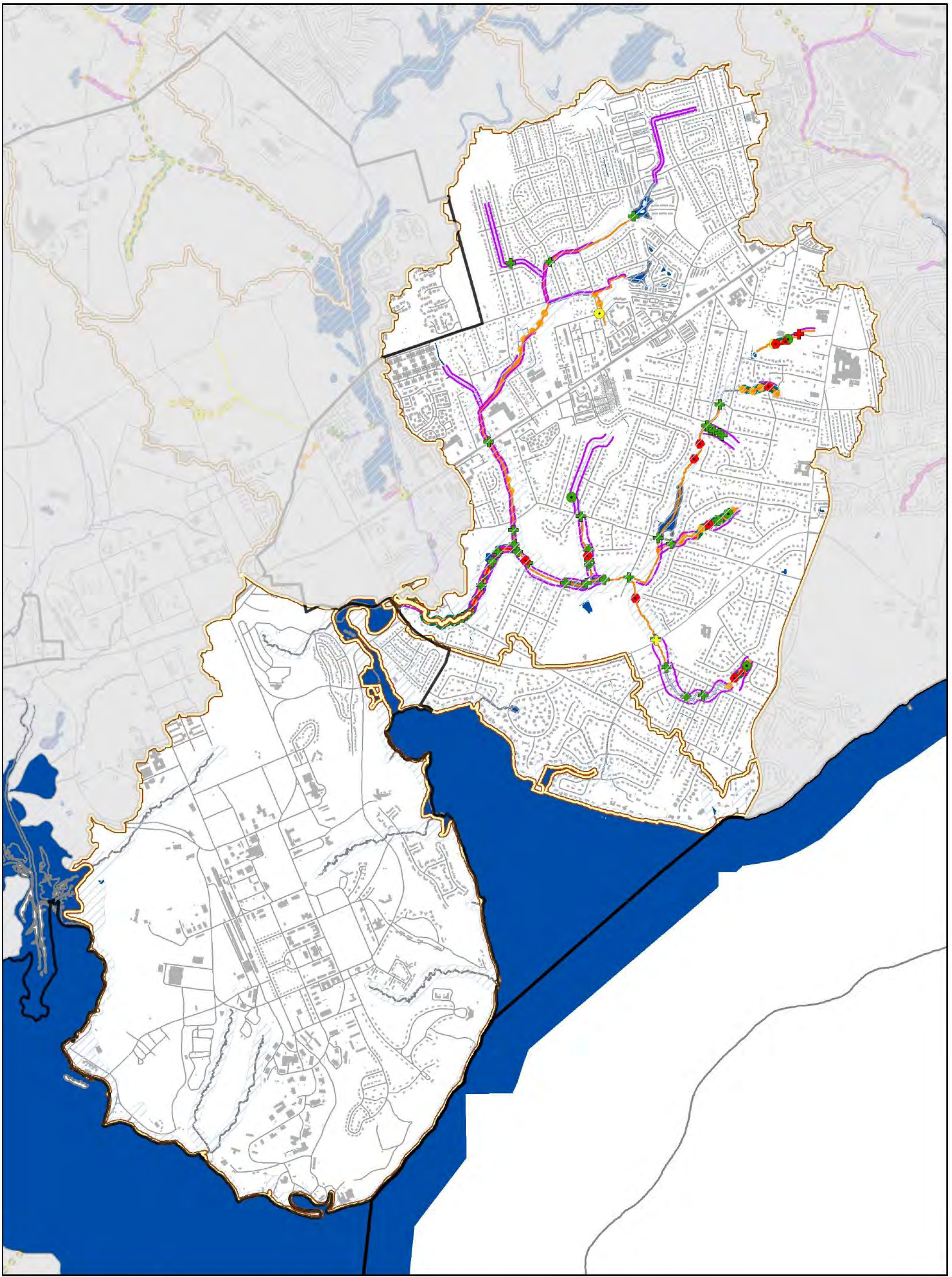

0 0.25 0.5
Miles

-  WMA Boundary
-  303d Listed Streams
-  Stormwater Facilities
-  Stormwater Pipes
-  Parcels
-  MSMD Flooding/Drainage Complaints
-  Public Identified Problem Areas 2003 - 2006


- Regional Ponds**
-  Constructed
-  Planned (no facilities)
- BMP Control Type**
-  Quantity and Quality
-  Quantity

Map 24
**Stormwater
Infrastructure Map**

Dogue Creek Watershed
North Fork WMA
Potomac WMA

0 0.25 0.5 Miles



<p>Obstruction Impact</p> <ul style="list-style-type: none"> ◆ Minor to Moderate ● Moderate to Severe ● Severe to Extreme <p>Dump Site Impact</p> <ul style="list-style-type: none"> ★ Minor to Moderate ★ Moderate to Severe ★ Severe to Extreme <p>Habitat Rating</p> <ul style="list-style-type: none"> — Excellent — Fair — Good — Very Poor — Poor — Unassessed 	<p>Head Cut Height</p> <ul style="list-style-type: none"> ▲ 0.5' - 1.0' ▲ 1' - 2' ▲ >2' <p>Pipe Impact</p> <ul style="list-style-type: none"> ● Minor to Moderate ● Moderate to Severe ● Severe to Extreme 	<p>Ditch Impact</p> <ul style="list-style-type: none"> ■ Minor to Moderate ■ Moderate to Severe ■ Severe to Extreme <p>Utility Impact</p> <ul style="list-style-type: none"> ◆ Minor to Moderate ● Moderate to Severe ● Severe to Extreme <p>CEM Category</p> <ul style="list-style-type: none"> ● CEM 2 - Incising ● CEM 3 - Widening 	<p>Crossing Impact</p> <ul style="list-style-type: none"> ◆ Minor to Moderate ◆ Moderate to Severe ◆ Severe to Extreme <p>▨ Resource Protection Area (RPA)</p> <p>— Deficient Buffer</p> <p>— Erosion</p> <p>— Lakes and Ponds</p>
---	---	---	--

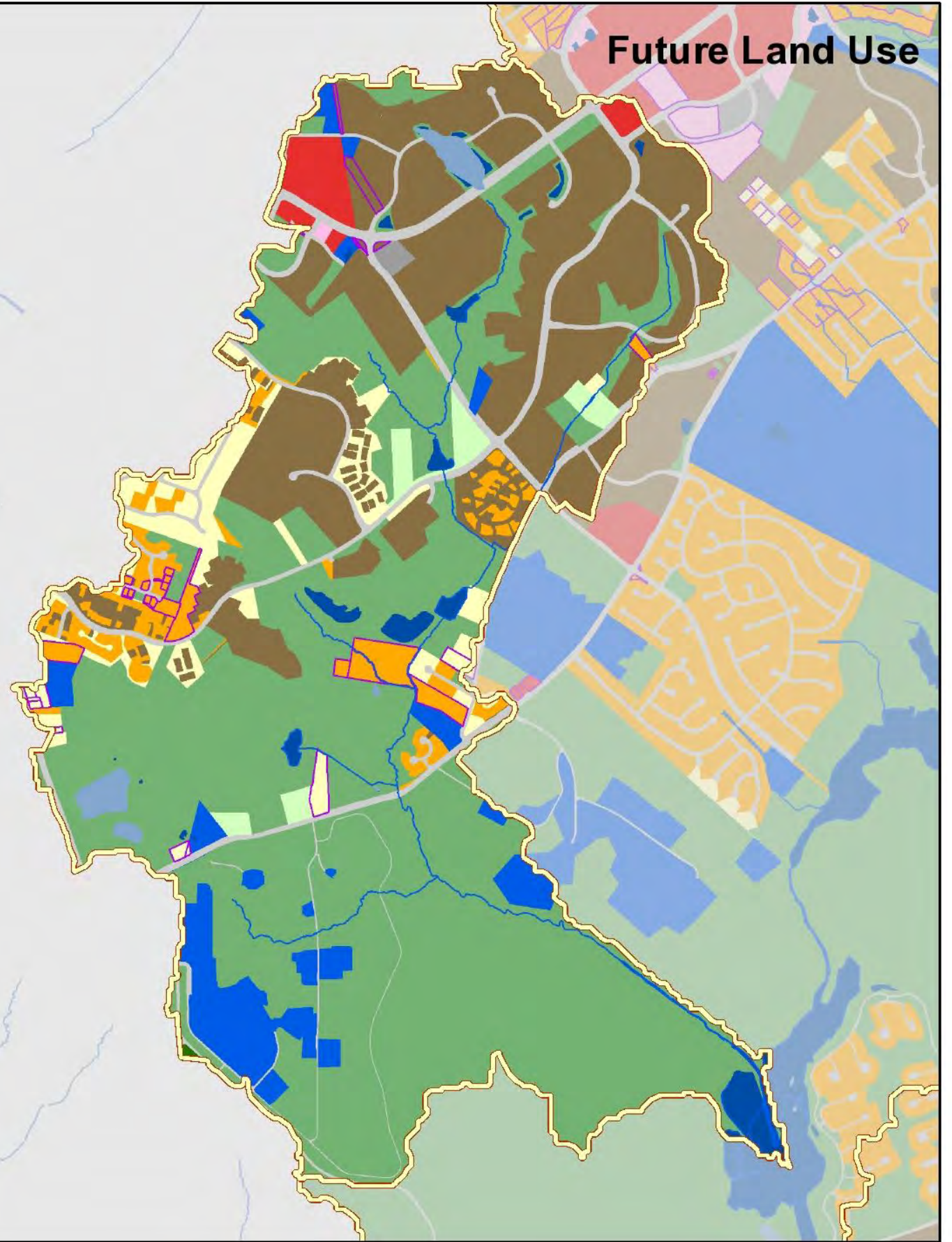
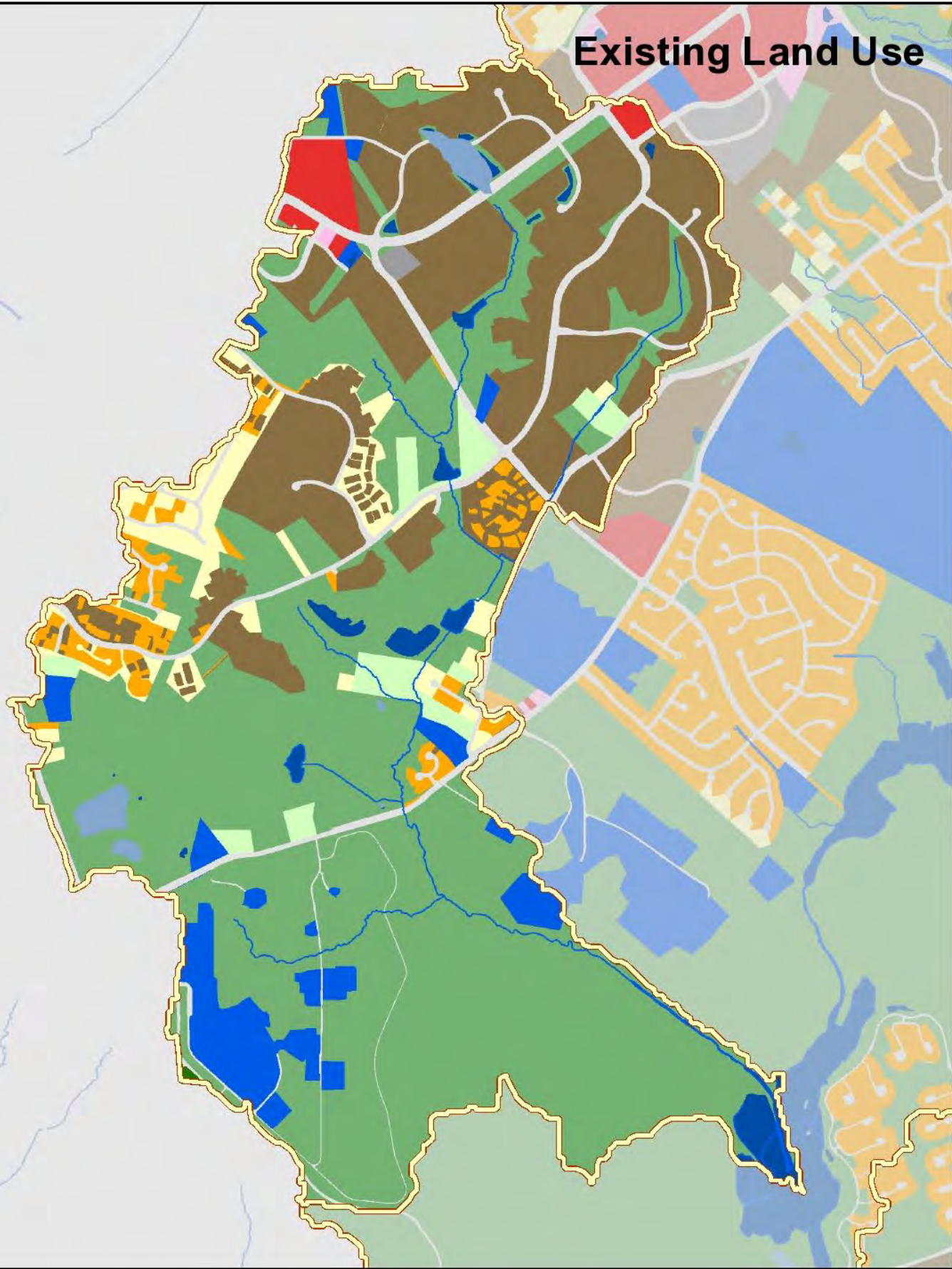
Map 25

Stream Condition Map

Dogue Creek Watershed
North Fork WMA
Potomac WMA

Existing Land Use

Future Land Use



0 0.25 0.5 Miles

Land Use

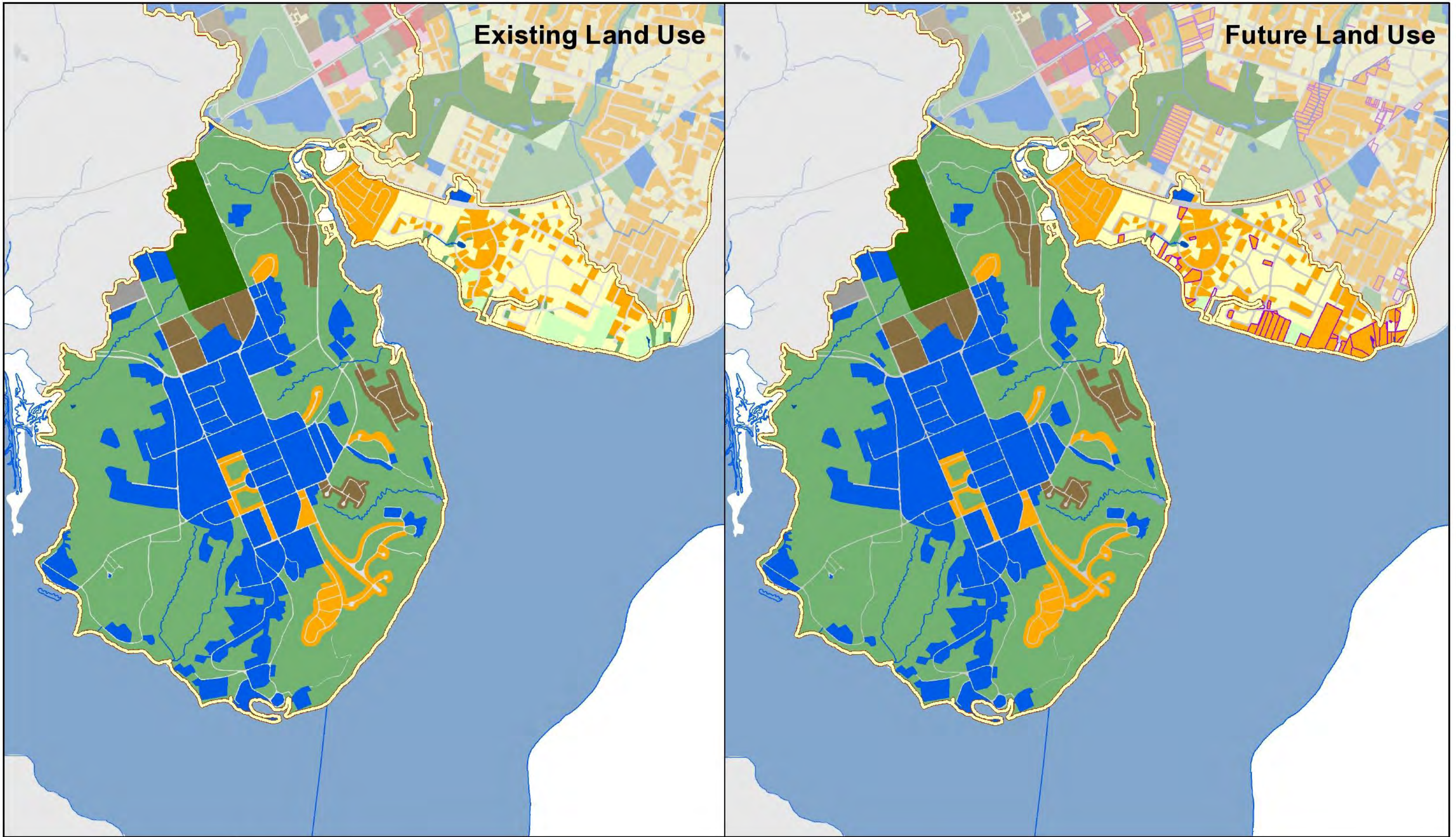
- | | | | | |
|--------------------|---------------------------|--------------------------|----------------------------|--------------------|
| Estate Residential | High Density Residential | Institutional | Medium Density Residential | Water |
| City of Fairfax | High Intensity Commercial | Low Density Residential | Open Space | WMA Boundary |
| Golf Course | Industrial | Low Intensity Commercial | Transportation | Change in Land Use |

Map 26

Land Use Map
Dogue Creek Watershed
Piney Run

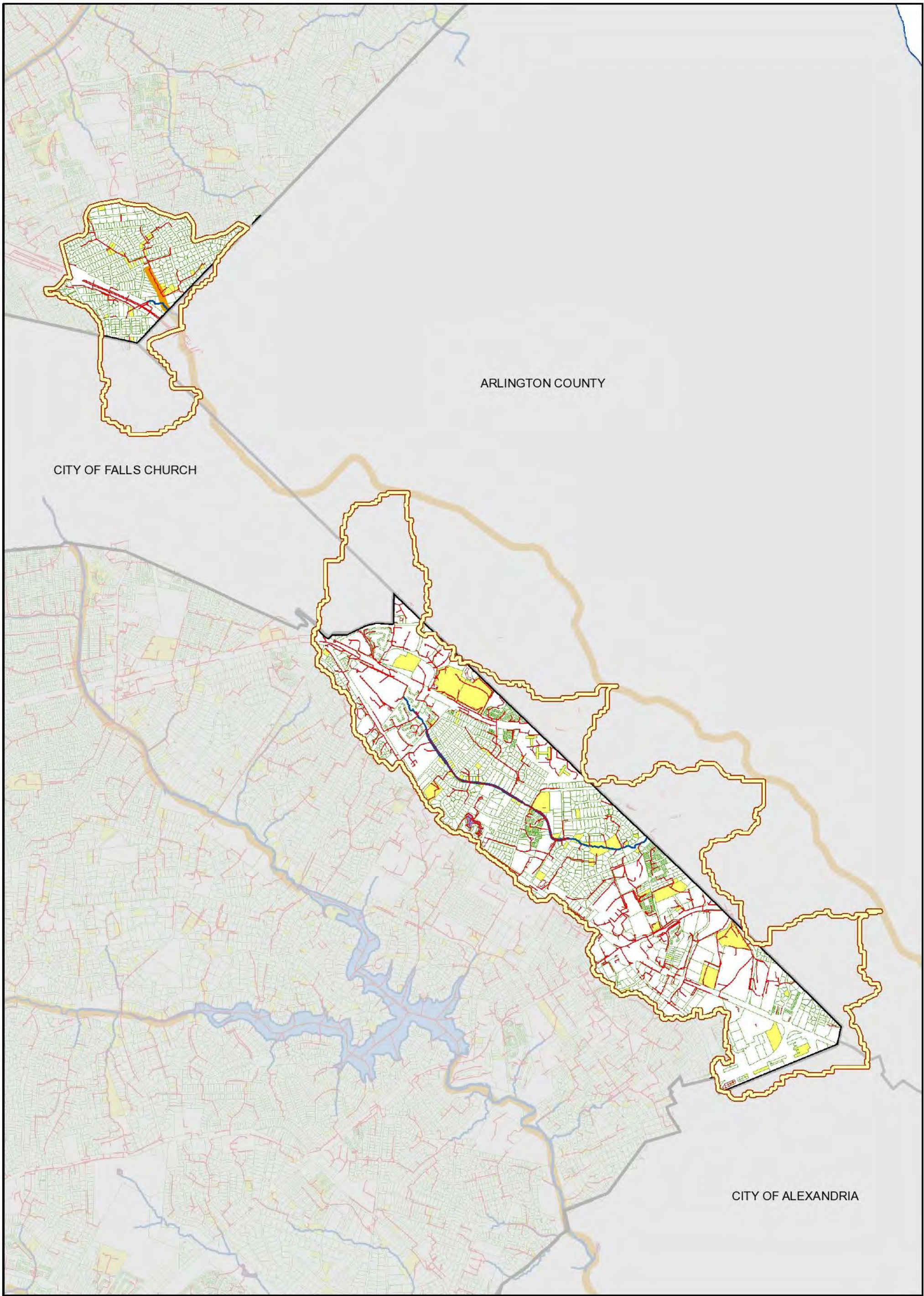
Existing Land Use

Future Land Use



Land Use

- | | | | | |
|--------------------|---------------------------|--------------------------|----------------------------|--------------------|
| Estate Residential | High Density Residential | Institutional | Medium Density Residential | Water |
| City of Fairfax | High Intensity Commercial | Low Density Residential | Open Space | WMA Boundary |
| Golf Course | Industrial | Low Intensity Commercial | Transportation | Change in Land Use |









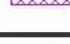
ARLINGTON COUNTY





CITY OF FALLS CHURCH

CITY OF ALEXANDRIA



0 0.25 0.5 Miles

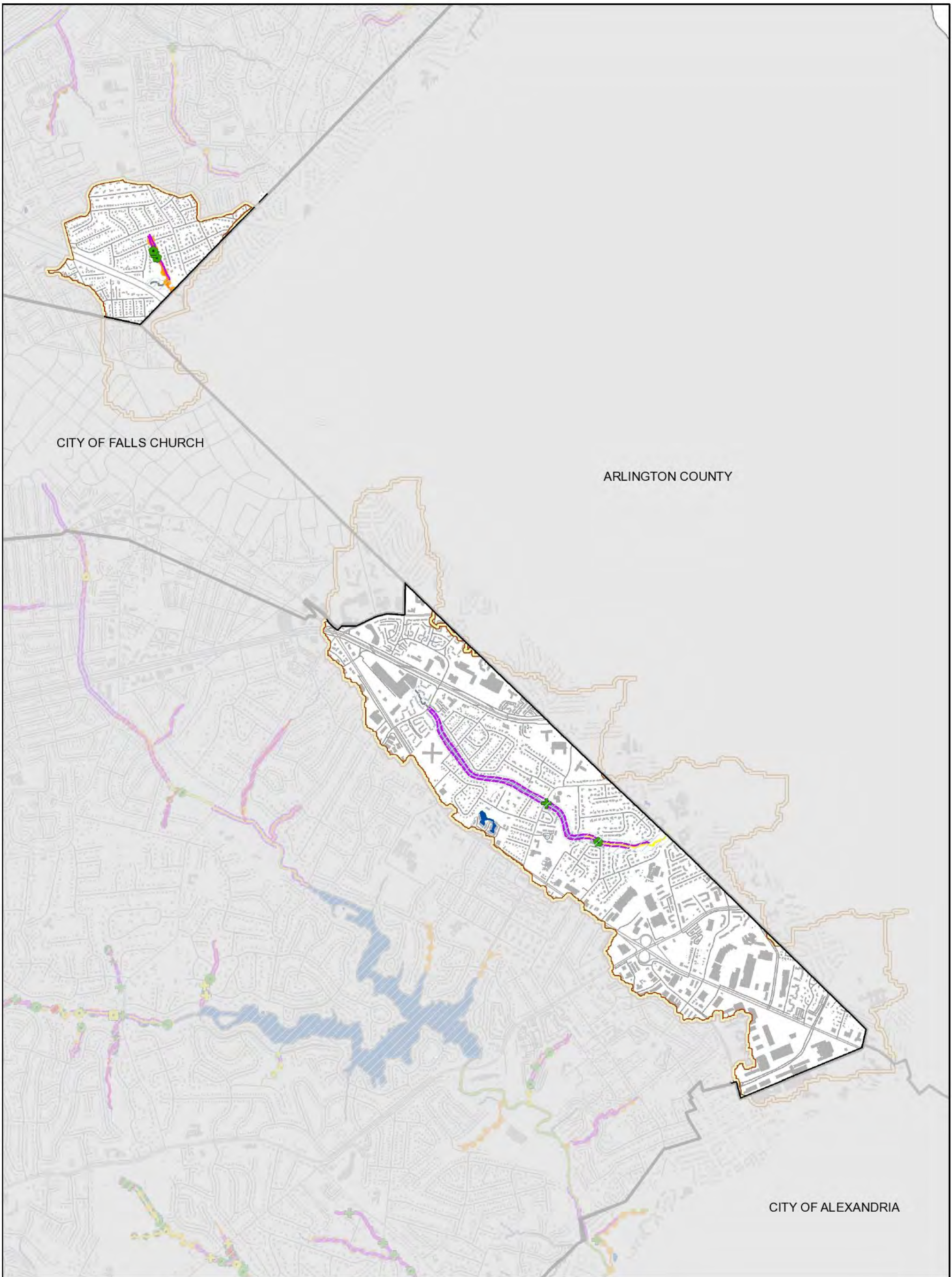
-  WMA Boundary
-  303d Listed Streams
-  Stormwater Facilities
-  Stormwater Pipes
-  Parcels
-  MSMD Flooding/Drainage Complaints
-  Public Identified Problem Areas 2003 - 2006

- Regional Ponds**
-  Constructed
 -  Planned
- BMP Control Type**
-  Quantity and Quality
 -  Quantity

Map 28

Stormwater Infrastructure Map

Four Mile Run Watershed



CITY OF FALLS CHURCH

ARLINGTON COUNTY

CITY OF ALEXANDRIA



0 0.25 0.5 Miles

Obstruction Impact

- Minor to Moderate
- Moderate to Severe
- Severe to Extreme

Dump Site Impact

- ★ Minor to Moderate
- ★ Moderate to Severe
- ★ Severe to Extreme

Habitat Rating

- Excellent
- Good
- Fair
- Poor
- Very Poor
- Unassessed

Head Cut Height

- ▲ 0.5' - 1.0'
- ▲ 1' - 2'
- ▲ >2'

Pipe Impact

- Minor to Moderate
- Moderate to Severe
- Severe to Extreme

Ditch Impact

- Minor to Moderate
- Moderate to Severe
- Severe to Extreme

Utility Impact

- Minor to Moderate
- Moderate to Severe
- Severe to Extreme

CEM Category

- CEM 2 - Incising
- CEM 3 - Widening

Crossing Impact

- ✚ Minor to Moderate
- ✚ Moderate to Severe
- ✚ Severe to Extreme

▨ Resource Protection Area (RPA)

— Deficient Buffer

— Erosion

— Lakes and Ponds

Map 29

Stream Condition Map

Four Mile Run Watershed