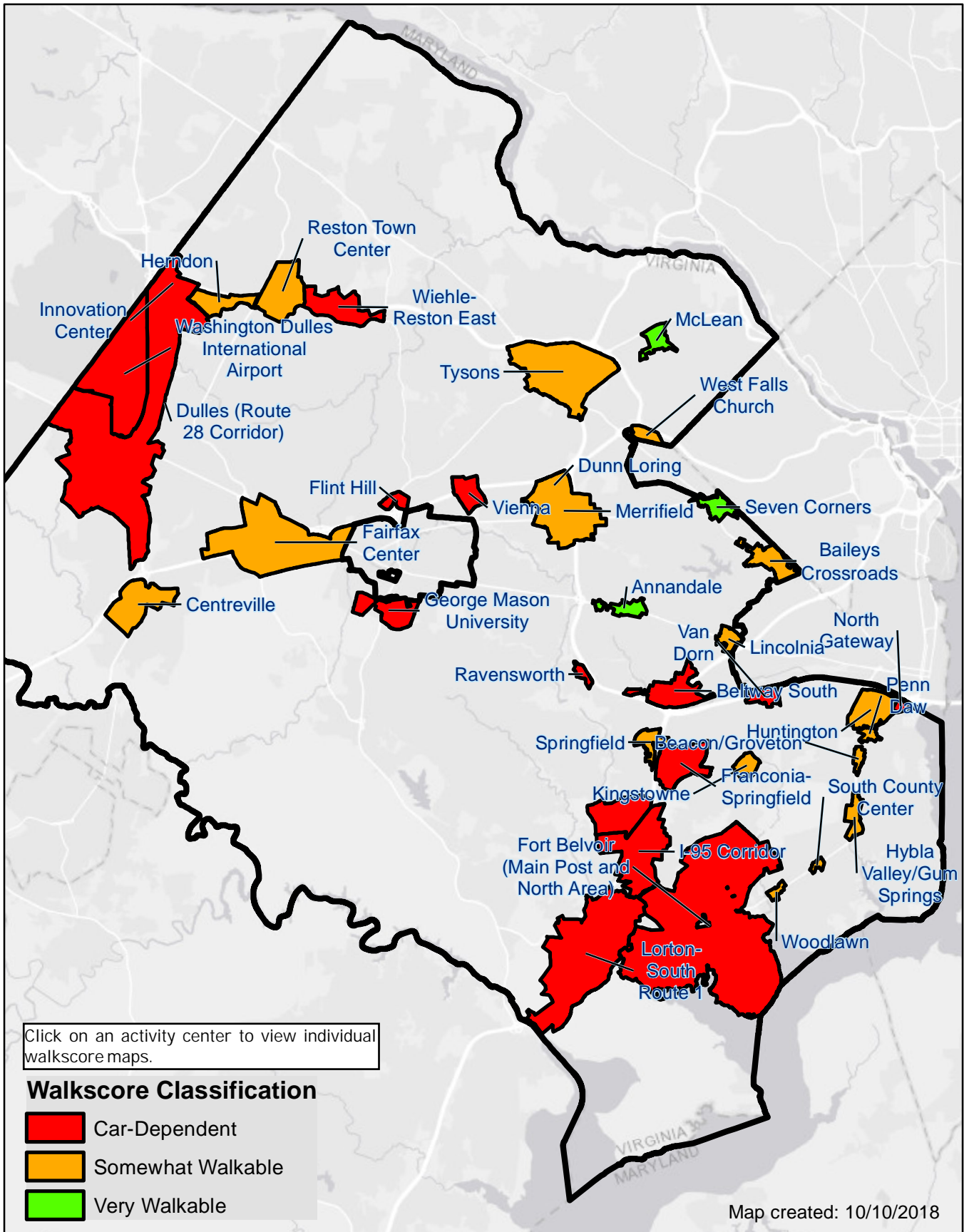
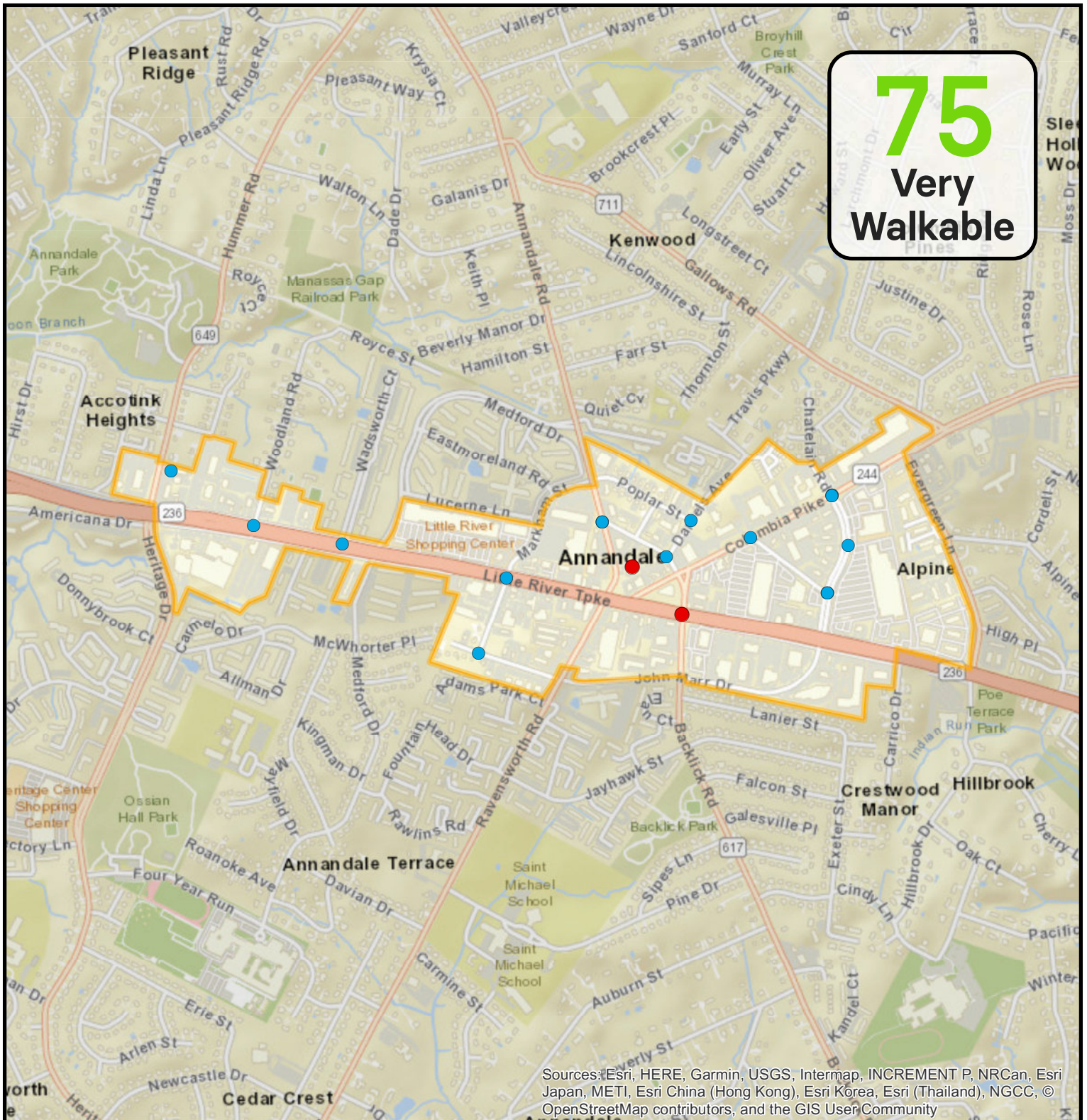


# Walkability of Activity Centers



# Annandale Community Business Center Activity Center Walkscore Points



## Walkscore Points

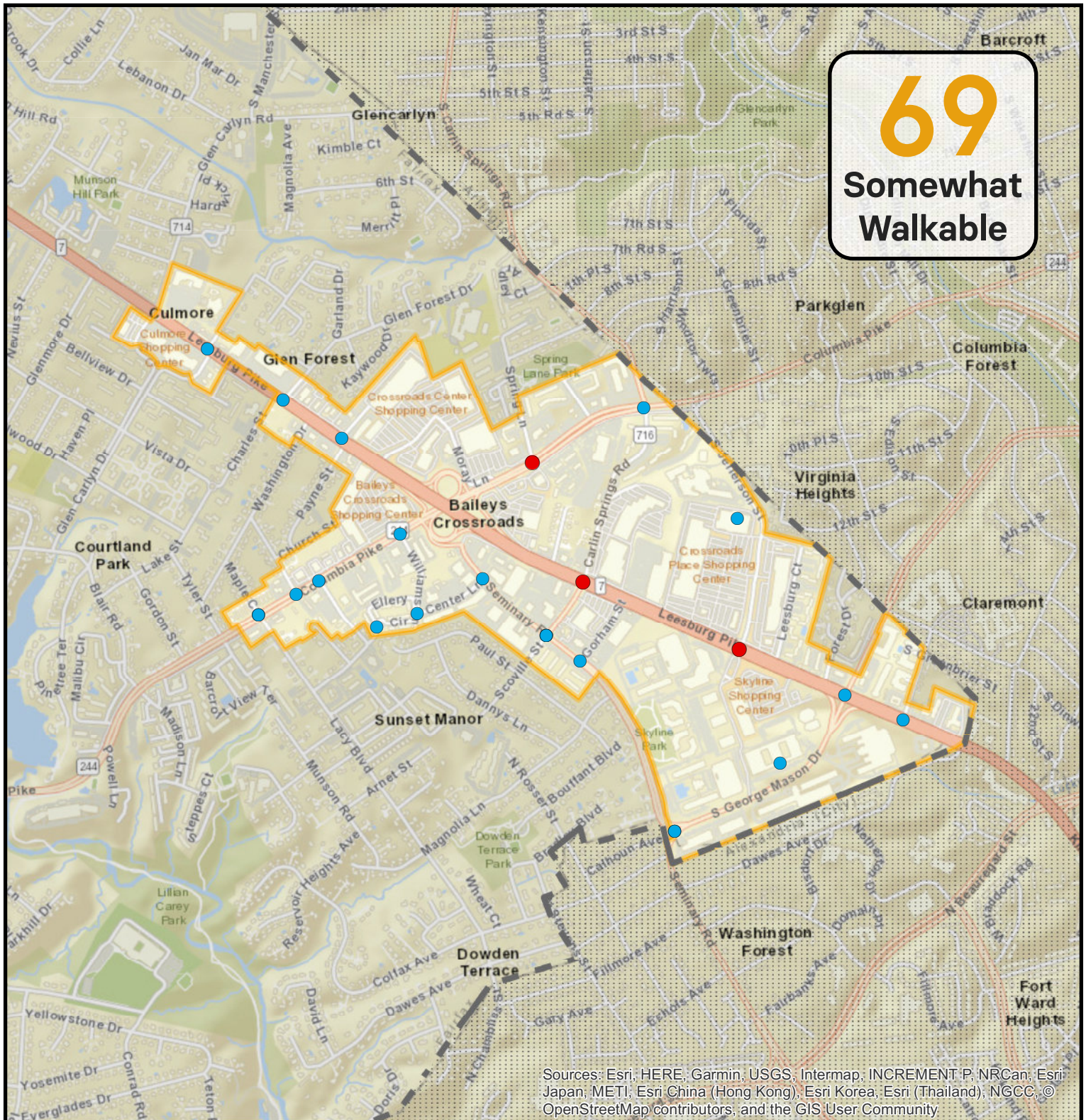
- Revised 2018 Points (15)
- Original 2017 Points (2)



2,000

Feet

# Baileys Crossroads Community Business Center Activity Center Walkscore Points



## Walkscore Points

- Revised 2018 Points (22)
- Original 2017 Points (3)



2,000

Feet

# Beacon/Groveton Community Business Center Activity Center Walkscore Points



## Walkscore Points

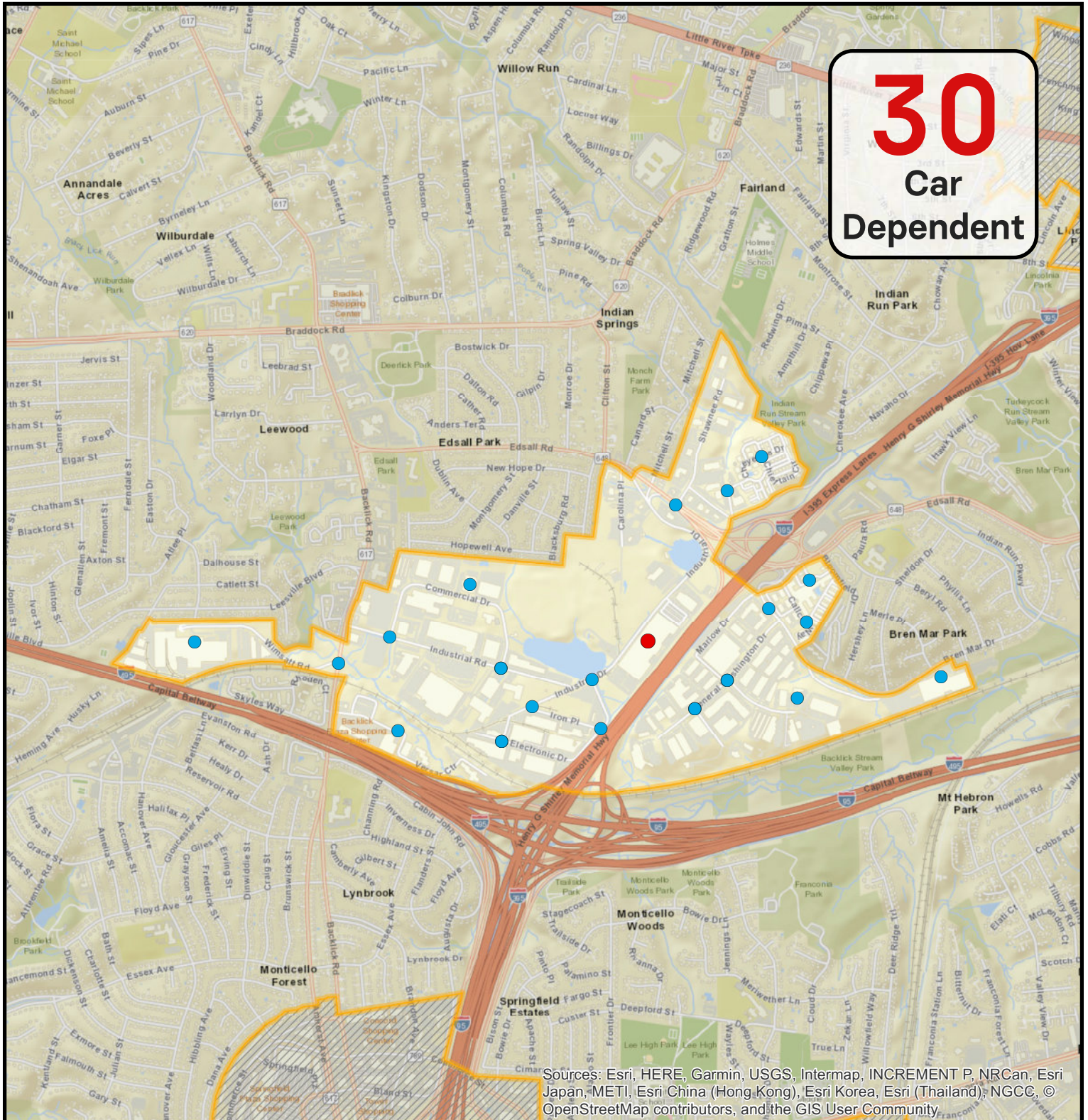
- Revised 2018 Points (9)
- Original 2017 Points (2)



1,000

Feet

# Beltway South Industrial Area Activity Center Walkscore Points



## Walkscore Points

- Revised 2018 Points (24)
- Original 2017 Point (1)

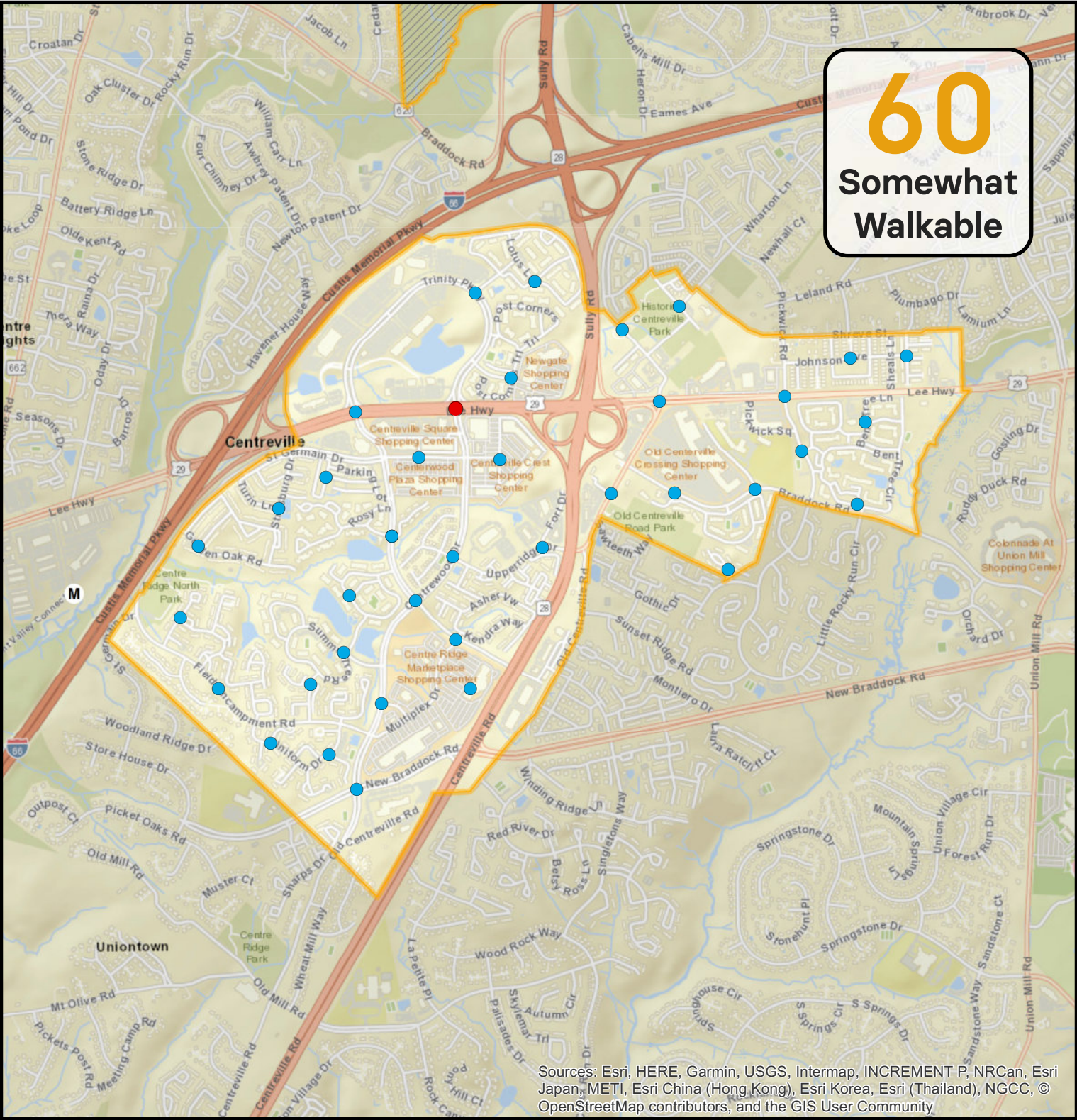


2,000

Feet

# Centreville Suburban Center Activity Center Walkscore Points

**60**  
Somewhat  
Walkable



Sources: Esri, HERE, Garmin, USGS, Intermap, INCREMENT P, NRCan, Esri Japan, METI, Esri China (Hong Kong), Esri Korea, Esri (Thailand), NGCC, © OpenStreetMap contributors, and the GIS User Community.

## Walkscore Points

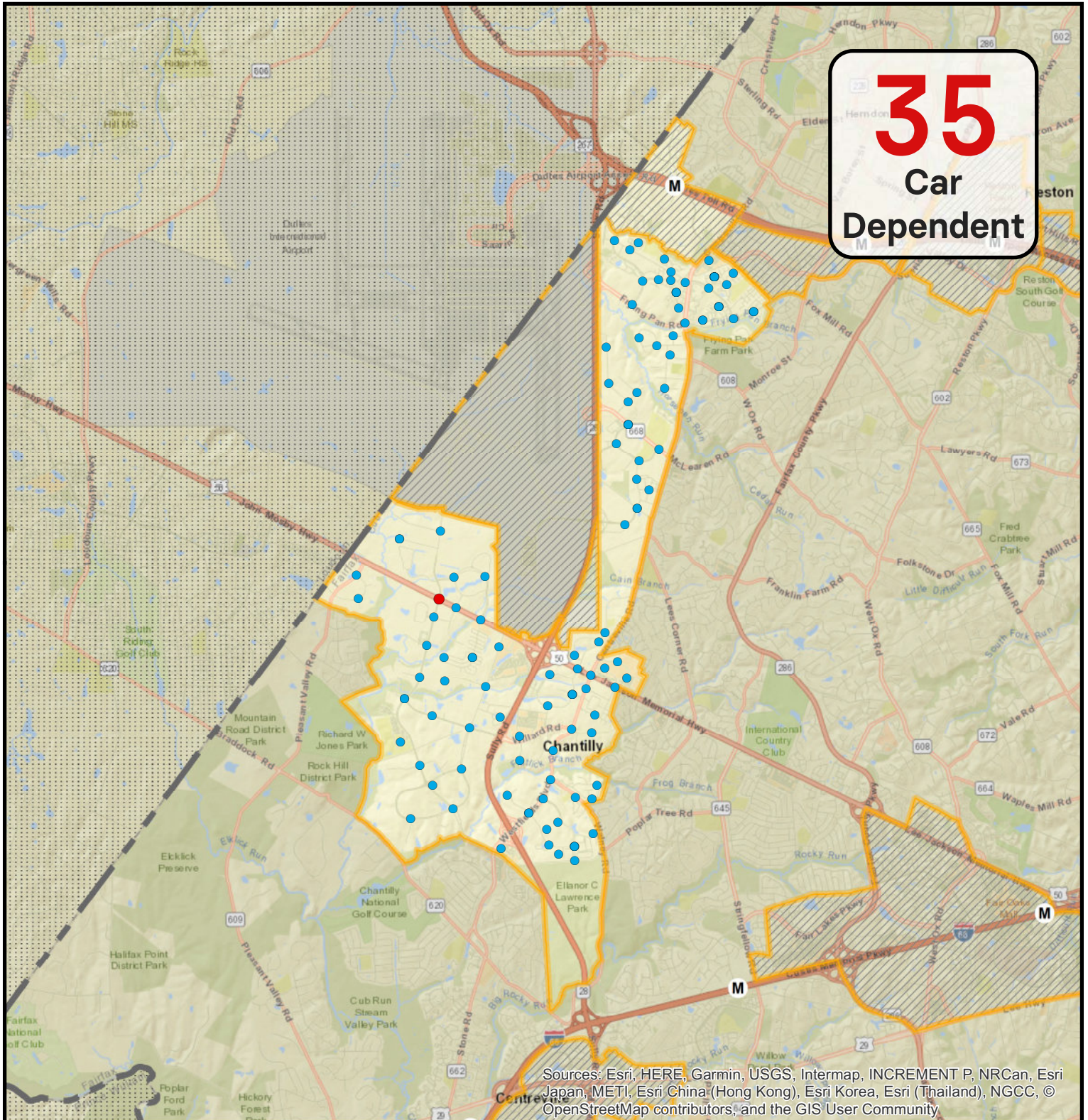
- Revised 2018 Points (38)
- Original 2017 Point (1)



2,000

Feet

# Dulles (Route 28 Corridor) Suburban Center Activity Center Core/Non-Core



## Walkscore Points

- Revised 2018 Points (120)
- Original 2017 Point (1)

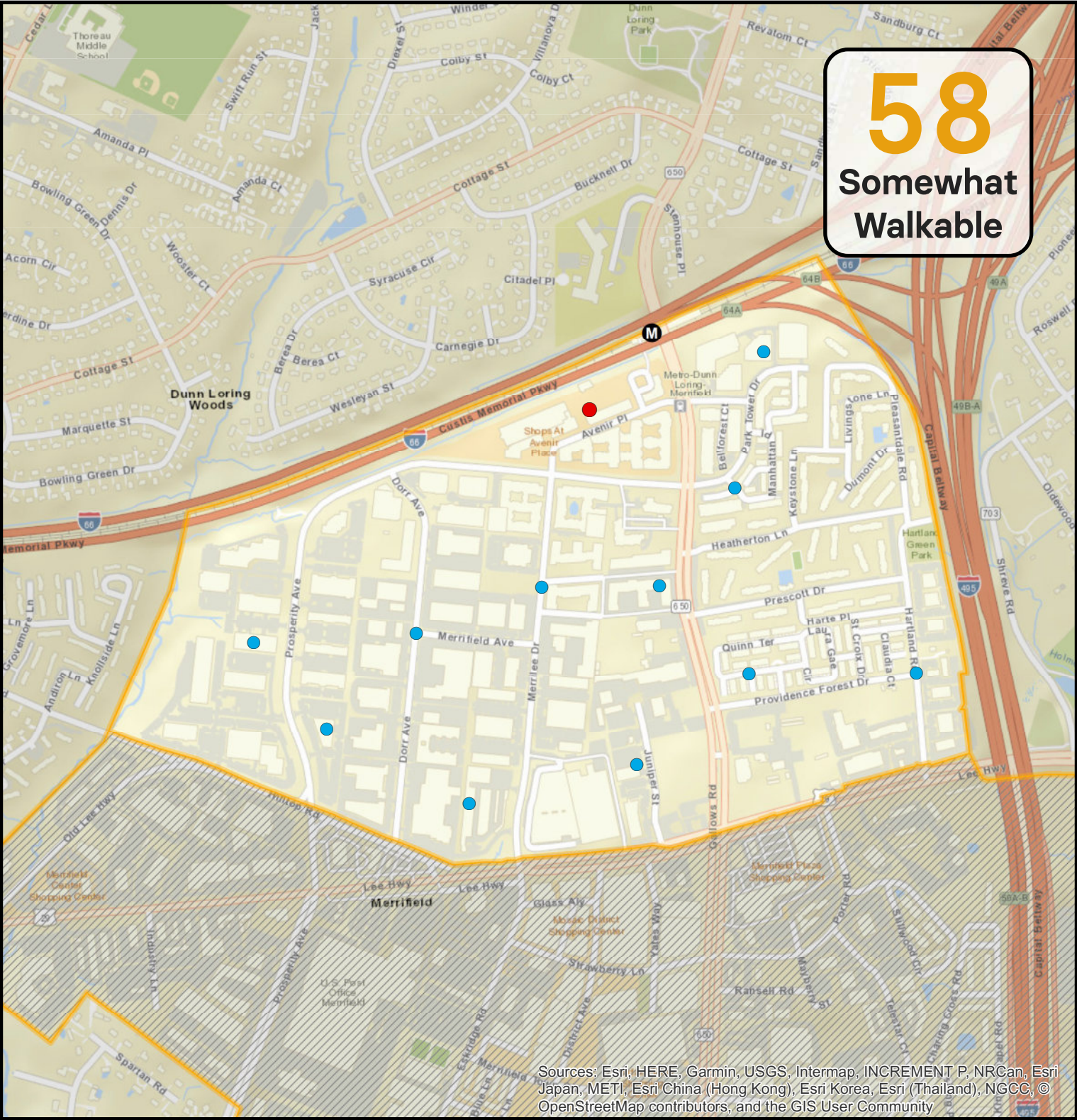


8,000

Feet

# Dunn Loring Transit Station Area Activity Center Walkscore Points

**58**  
Somewhat  
Walkable



Sources: Esri, HERE, Garmin, USGS, Intermap, INCREMENT P, NRCan, Esri Japan, METI, Esri China (Hong Kong), Esri Korea, Esri (Thailand), NGCC, © OpenStreetMap contributors, and the GIS User Community

## Walkscore Points

- Revised 2018 Points (11)
- Original 2017 Point (1)



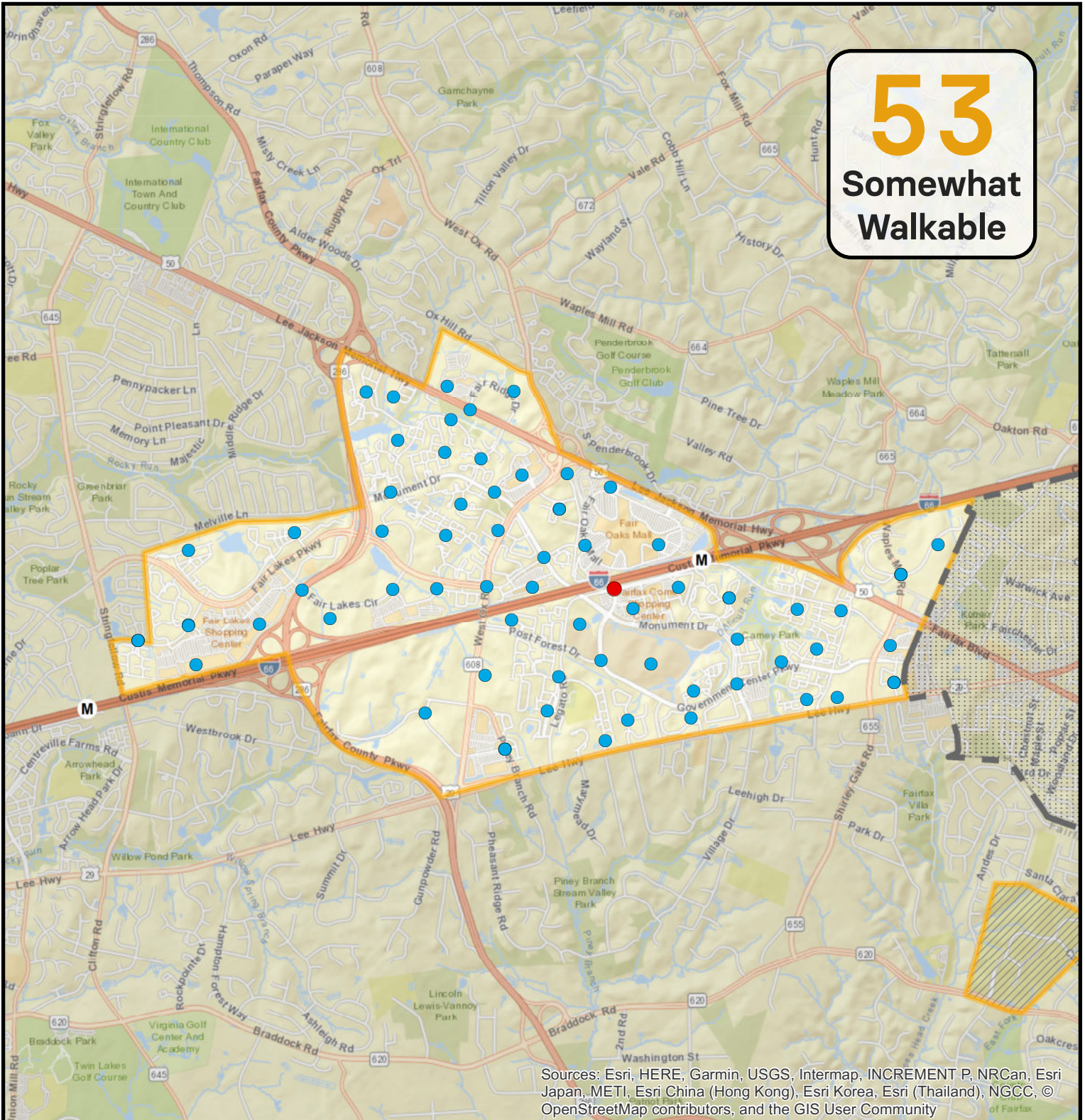
1,000

Feet



# Fairfax Center Suburban Center Activity Center Walkscore Points

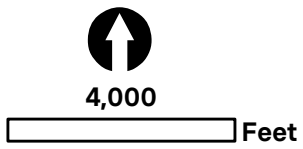
**53**  
Somewhat  
Walkable



Sources: Esri, HERE, Garmin, USGS, Intermap, INCREMENT P, NRCan, Esri Japan, METI, Esri China (Hong Kong), Esri Korea, Esri (Thailand), NGCC, © OpenStreetMap contributors, and the GIS User Community

## Walkscore Points

- Revised 2018 Points (73)
- Original 2017 Point (1)



# Flint Hill Suburban Center Activity Center Walkscore Points



## Walkscore Points

- Revised 2018 Points (14)
- Original 2017 Point (1)



1,000

Feet

# Franconia-Springfield Transit Station Area Activity Center Walkscore Points



## Walkscore Points

- Revised 2018 Points (31)
- Original 2017 Point (1)

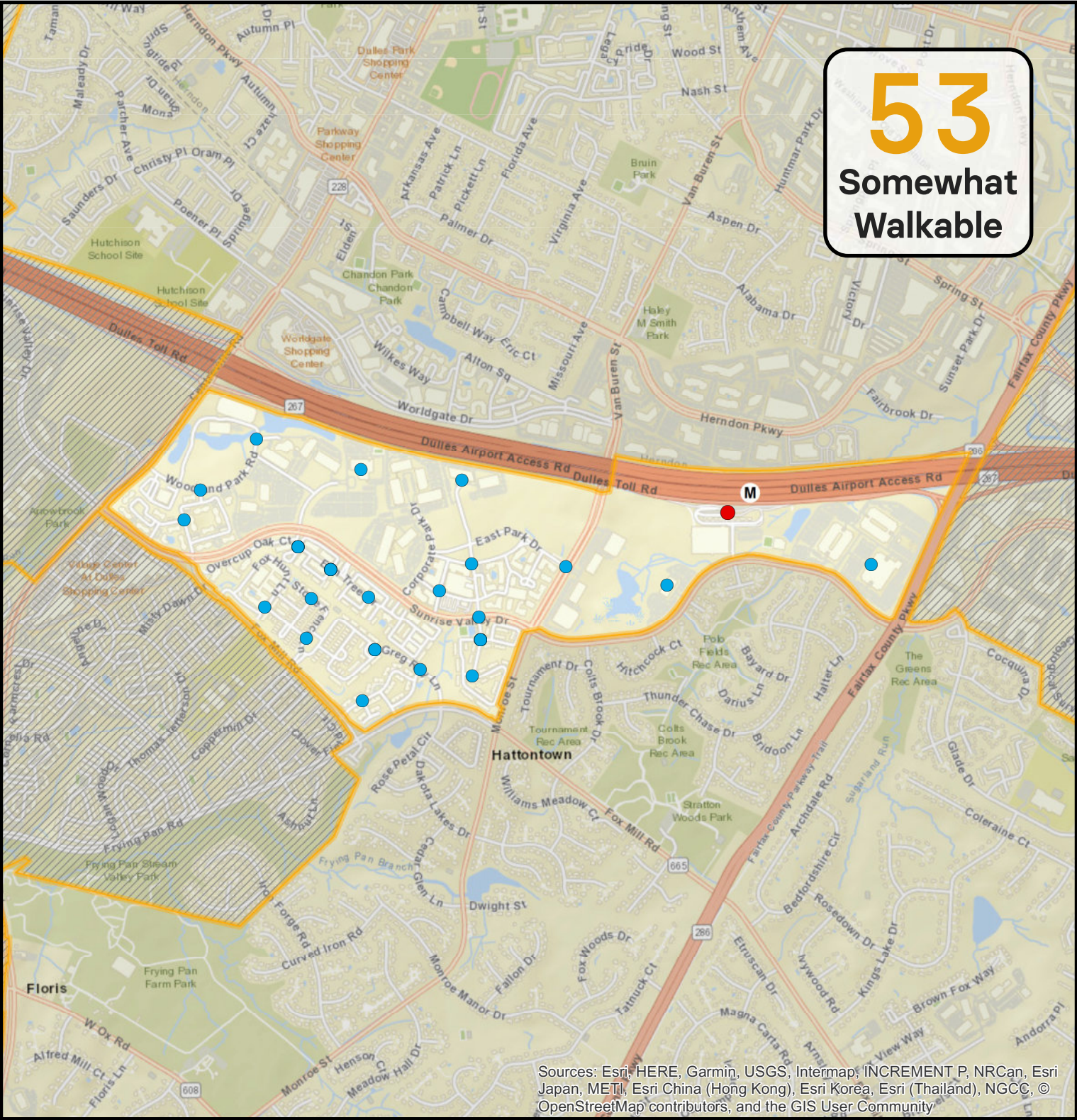


2,000

Feet

# Herndon Transit Station Area Activity Center Walkscore Points

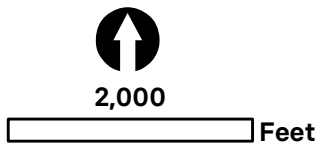
**53**  
Somewhat  
Walkable



Sources: Esri, HERE, Garmin, USGS, Intermap, INCREMENT P, NRCan, Esri Japan, METI, Esri China (Hong Kong), Esri Korea, Esri (Thailand), NGCC, © OpenStreetMap contributors, and the GIS User Community

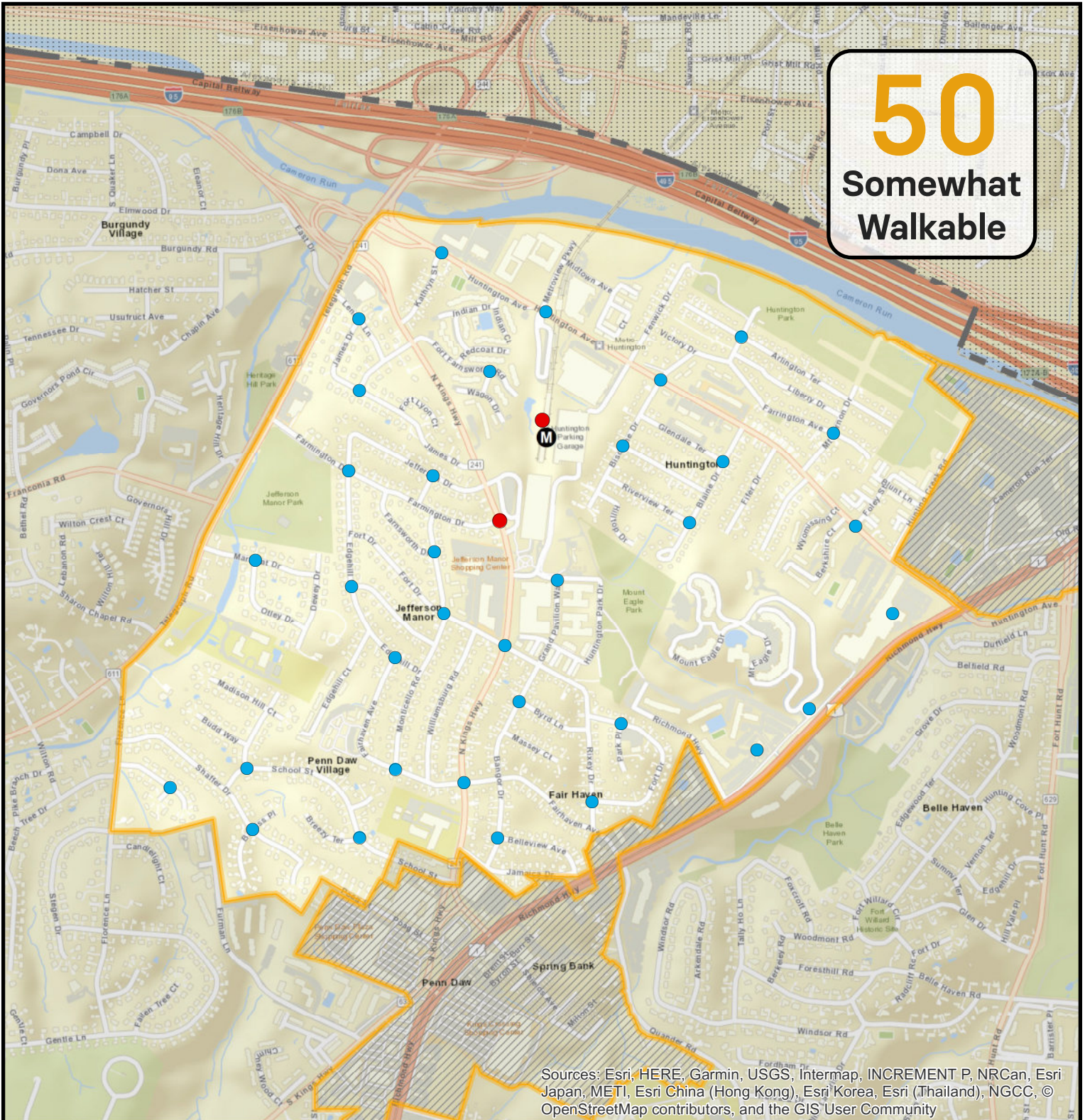
## Walkscore Points

- Revised 2018 Points (29)
- Original 2017 Point (1)



# Huntington Transit Station Area Activity Center Walkscore Points

**50**  
Somewhat  
Walkable



## Walkscore Points

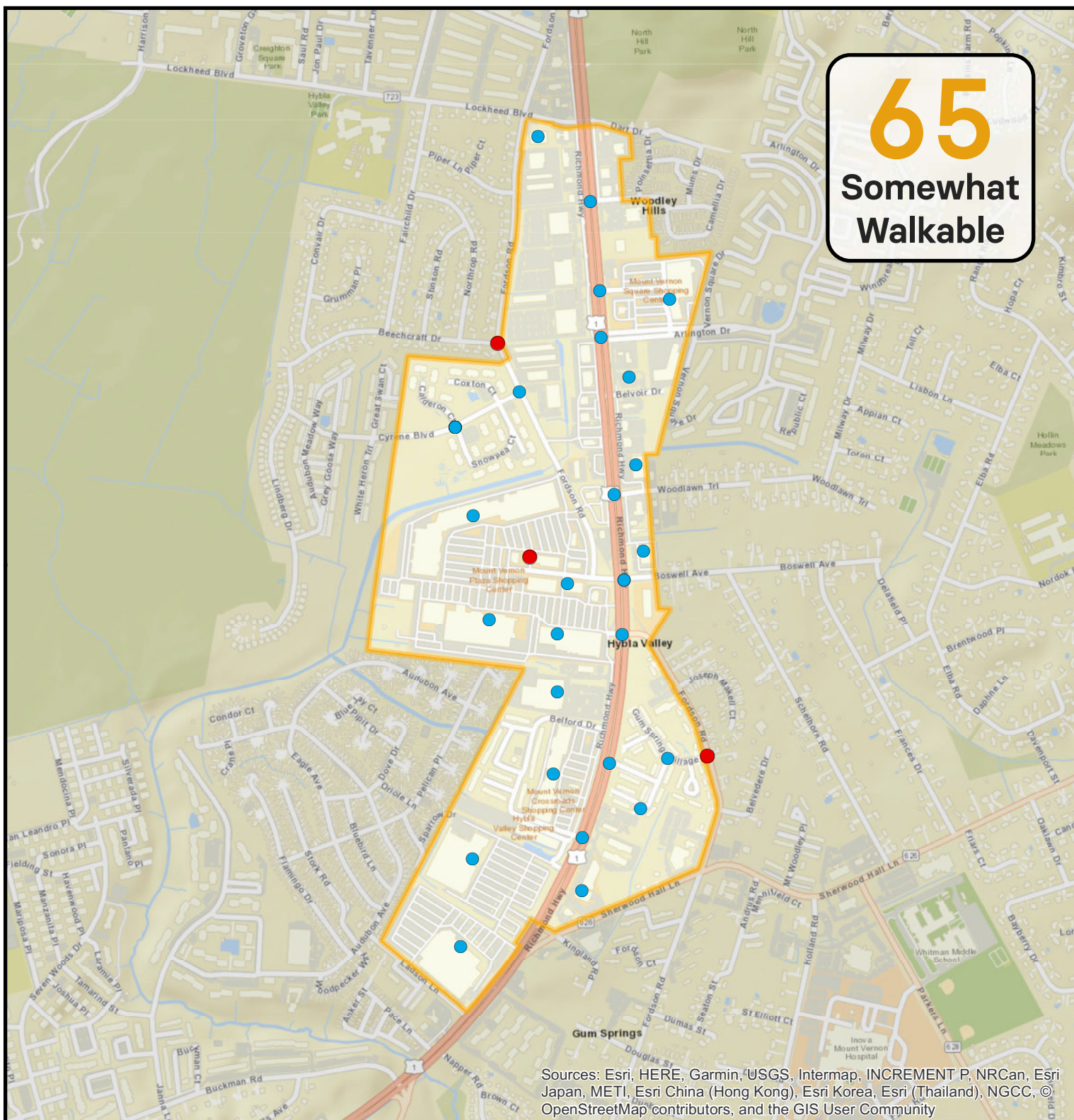
- Revised 2018 Points (34)
- Original 2017 Points (2)



2,000

Feet

# Hybla Valley/Gum Springs Community Business Center Activity Center Walkscore



## Walkscore Points

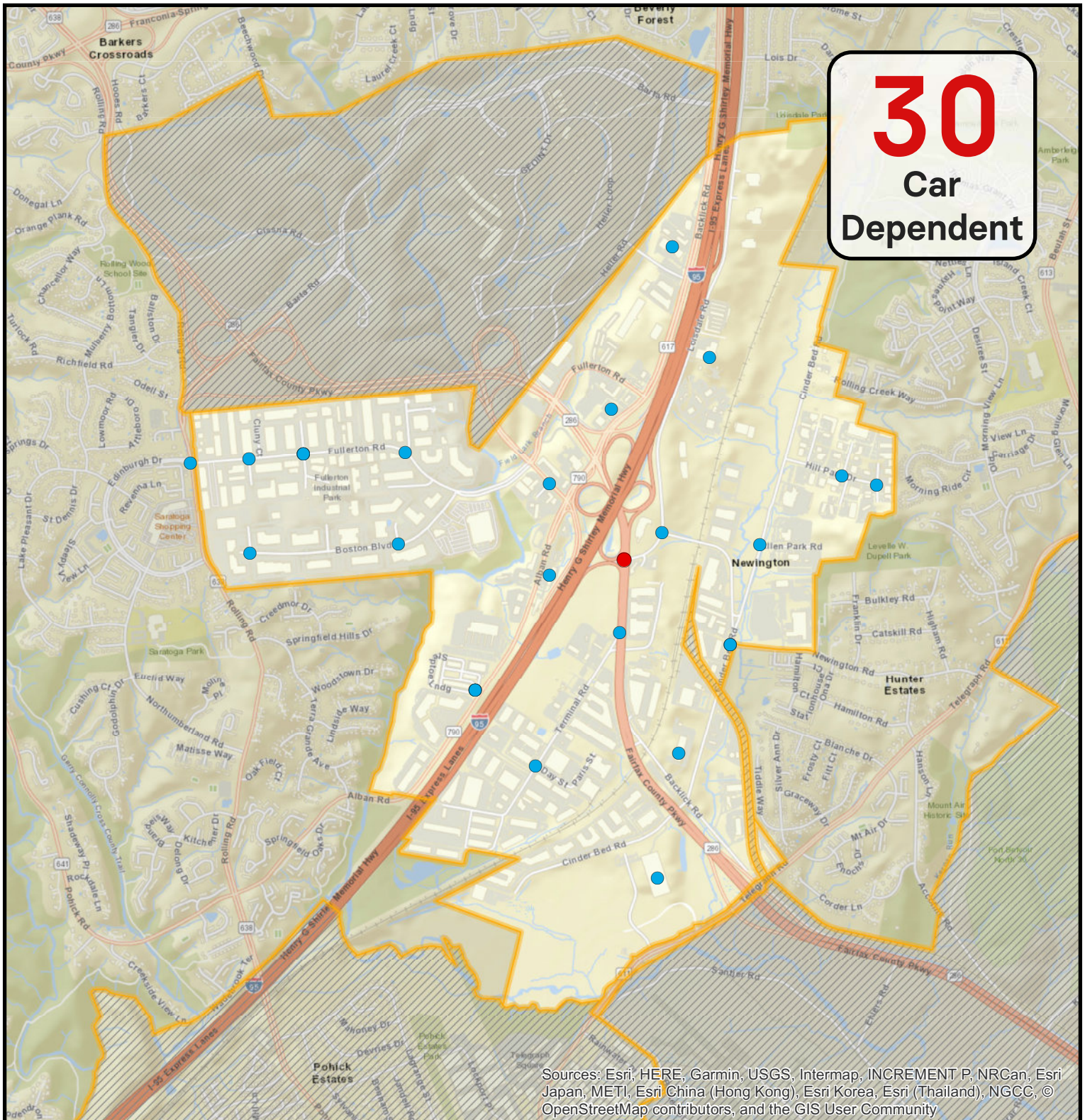
- Revised 2018 Points (31)
- Original 2017 Points (3)



2,000

Feet

# I-95 Corridor Industrial Area Activity Center Walkscore Points



## Walkscore Points

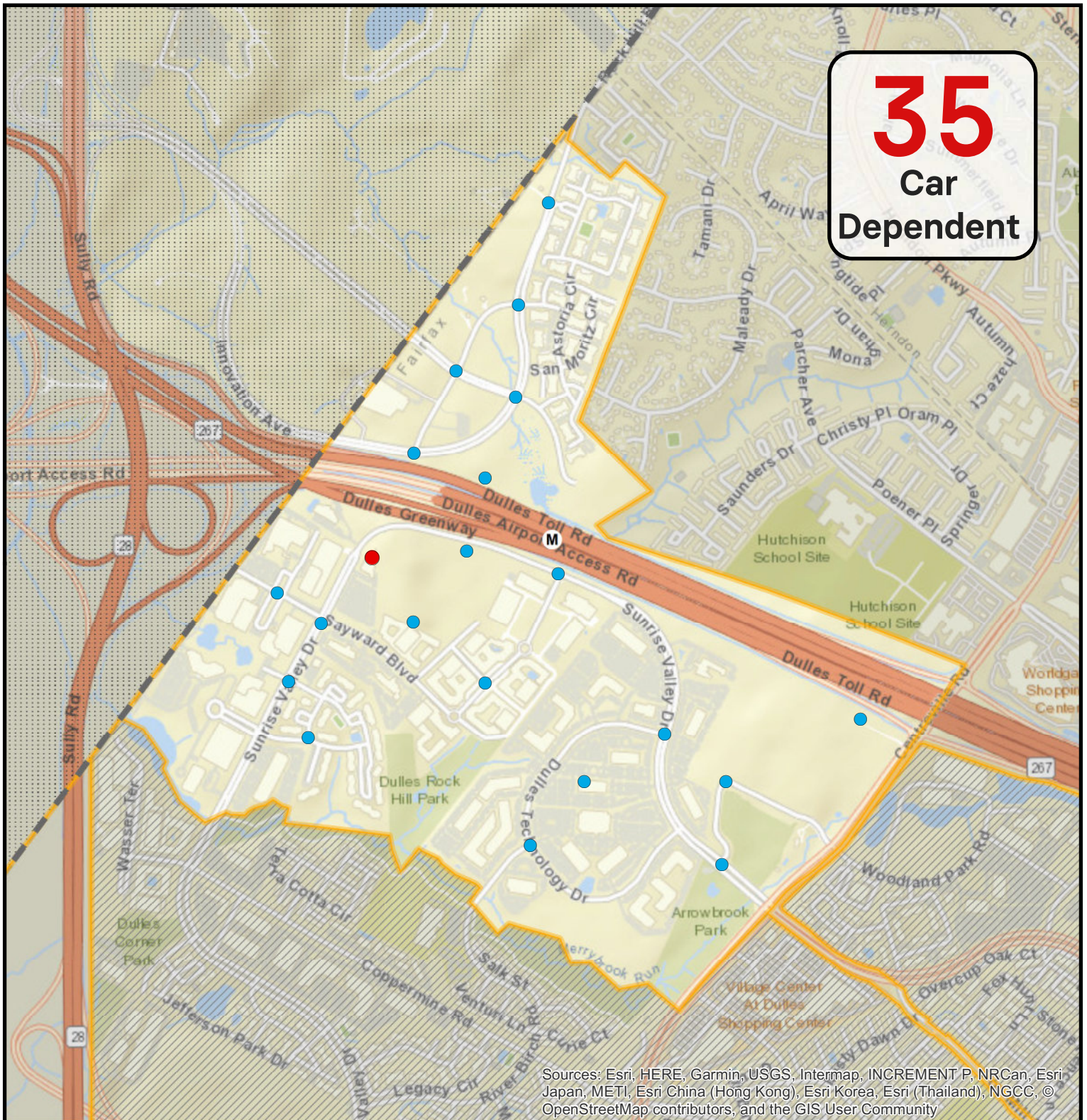
- Revised 2018 Points (26)
- Original 2017 Point (1)



4,000

Feet

# Innovation Center Transit Station Area Activity Center Walkscore Points



**35**  
Car  
Dependent

Sources: Esri, HERE, Garmin, USGS, Intermap, INCREMENT P, NRCan, Esri Japan, METI, Esri China (Hong Kong), Esri Korea, Esri (Thailand), NGCC, © OpenStreetMap contributors, and the GIS User Community

## Walkscore Points

- Revised 2018 Points (20)
- Original 2017 Point (1)



2,000

Feet



# Kingstowne Community Business Center Activity Center Walkscore Points



**65**  
Somewhat  
Walkable

## Walkscore Points

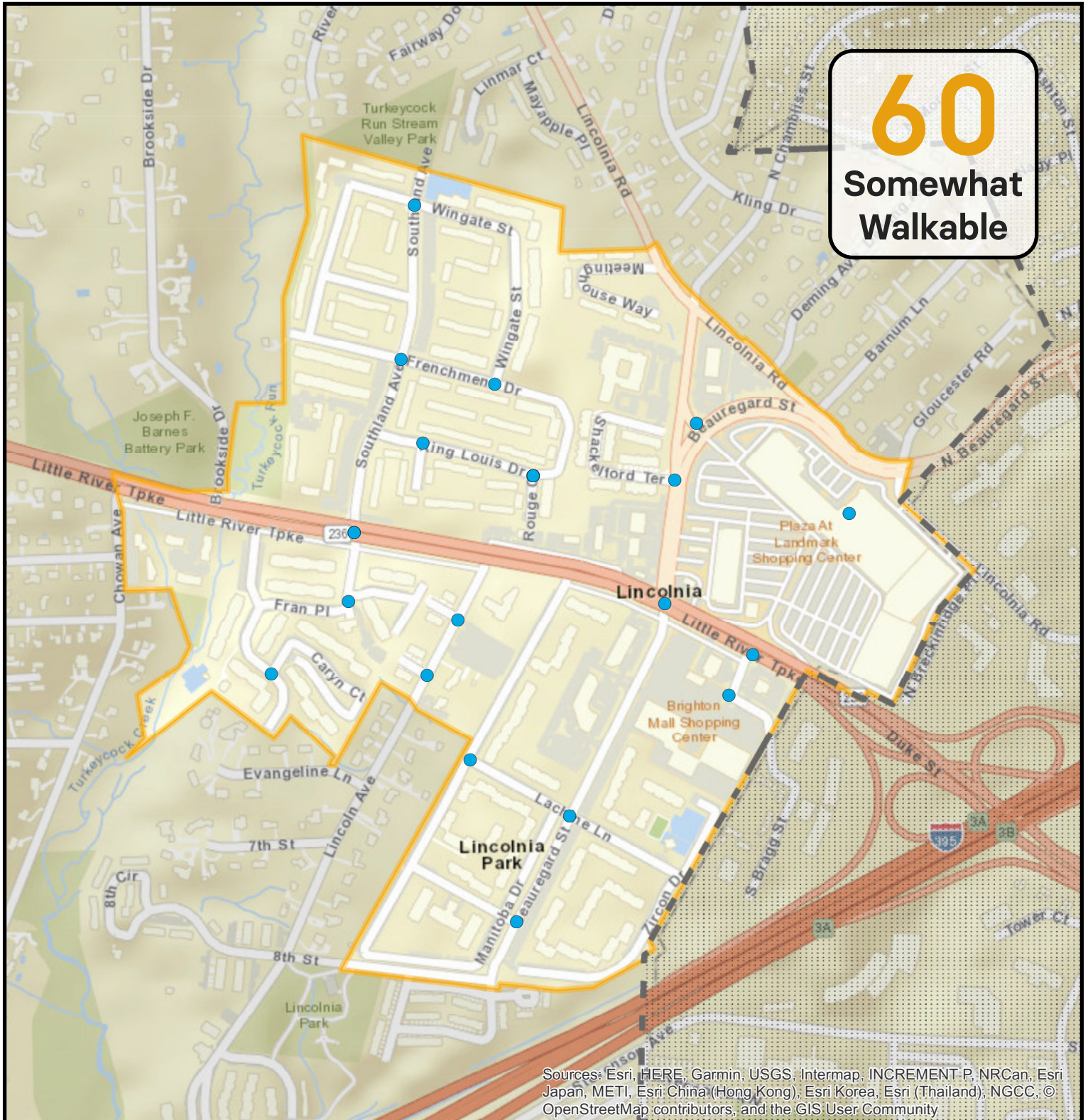
- Revised 2018 Points (22)
- Original 2017 Point (1)



1,000

Feet

# Lincolnia Community Business Center Activity Center Walkscore Points



**60**  
Somewhat  
Walkable

Sources: Esri, HERE, Garmin, USGS, Intermap, INCREMENT P, NRCan, Esri Japan, METI, Esri China (Hong Kong), Esri Korea, Esri (Thailand), NGCC, © OpenStreetMap contributors, and the GIS User Community

## Walkscore Points

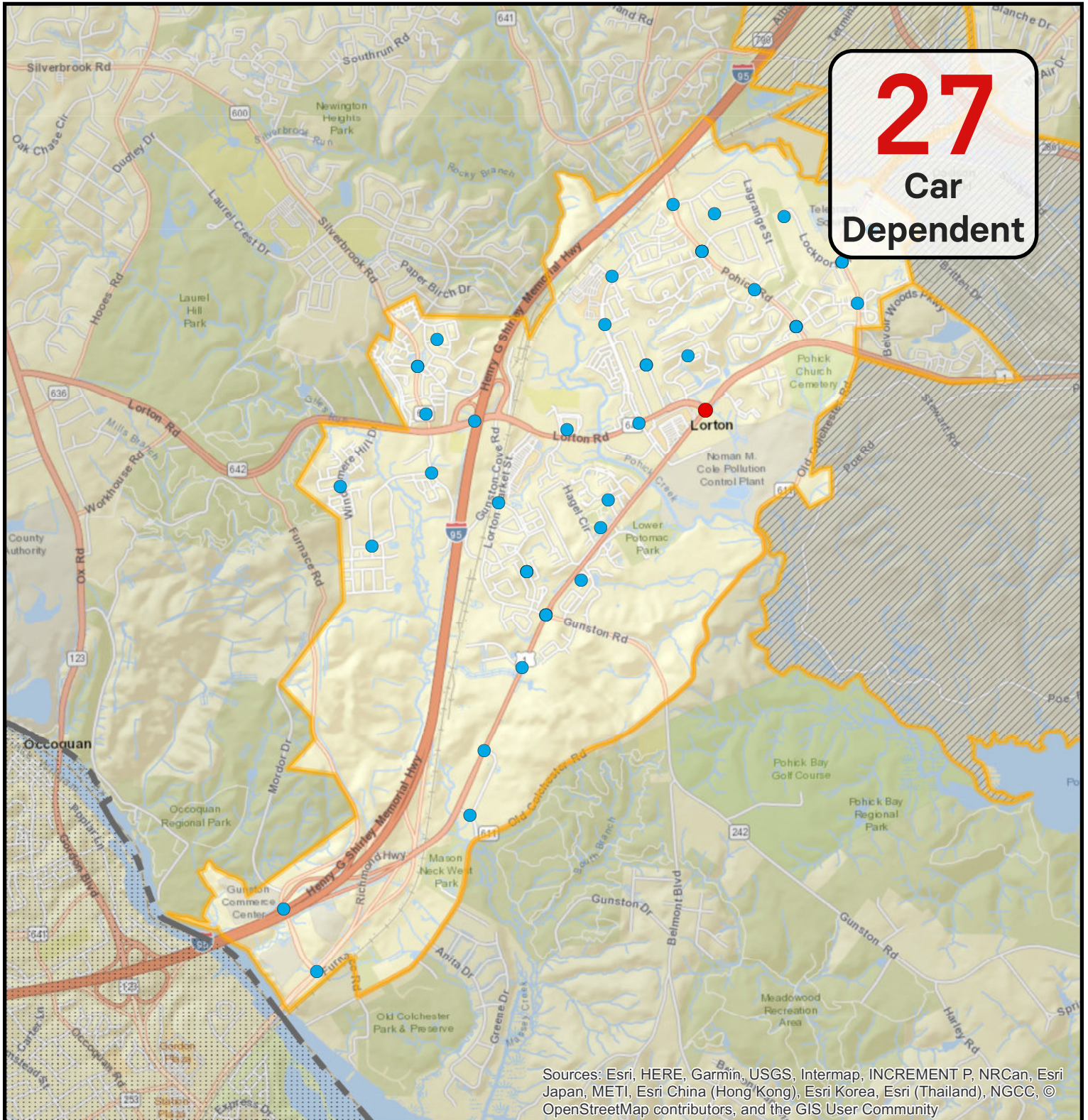
- Revised 2018 Points (22)



1,000

Feet

# Lorton-South Route 1 Suburban Center Activity Center Walkscore Points



**27**  
Car  
Dependent

Sources: Esri, HERE, Garmin, USGS, Intermap, INCREMENT P, NRCan, Esri Japan, METI, Esri China (Hong Kong), Esri Korea, Esri (Thailand), NGCC, © OpenStreetMap contributors, and the GIS User Community

## Walkscore Points

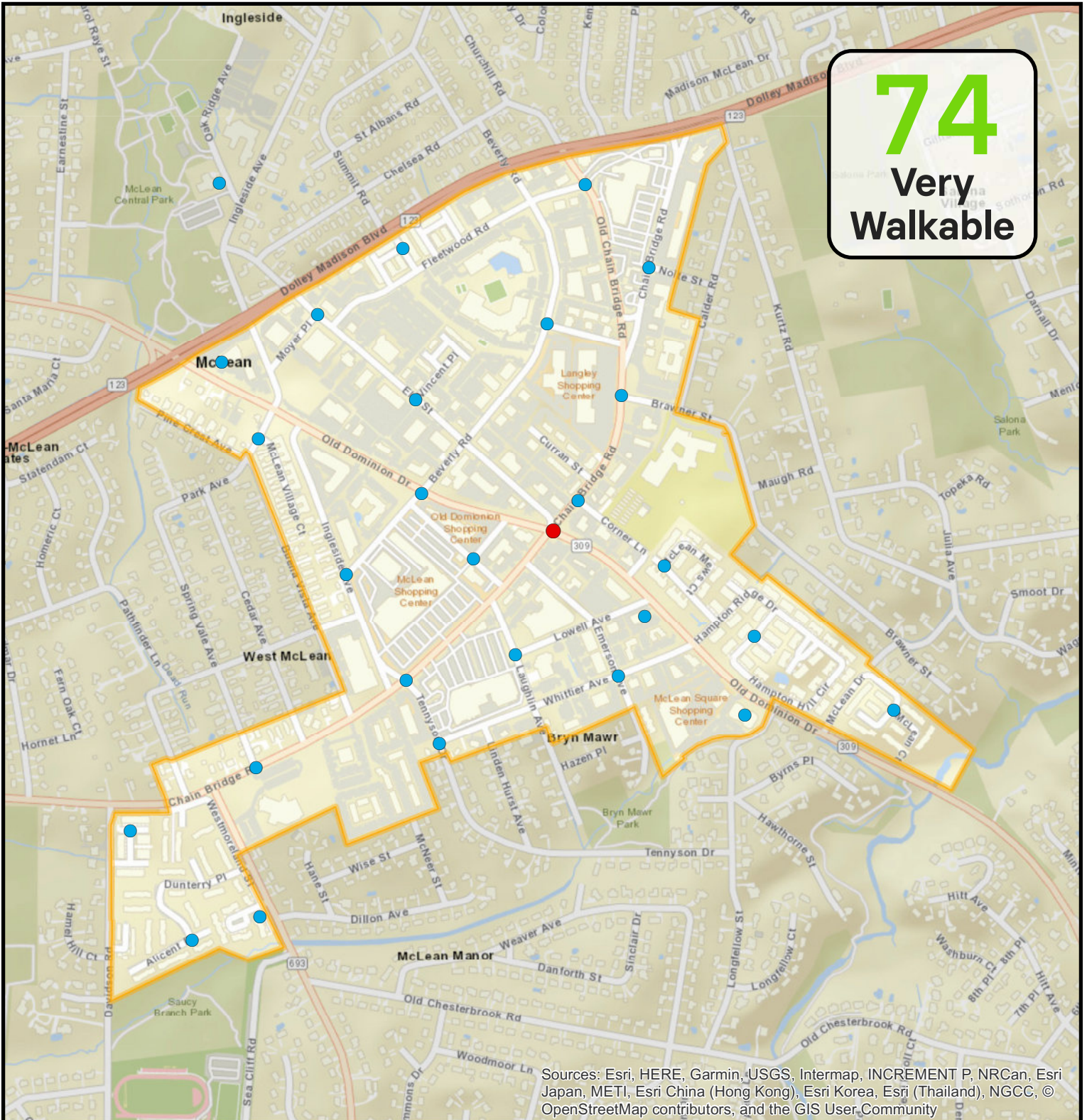
- Revised 2018 Points (44)
- Original 2017 Point (1)



5,000

Feet

# McLean Community Business Center Activity Center Walkscore Points



## Walkscore Points

- Revised 2018 Points (27)
- Original 2017 Point (1)

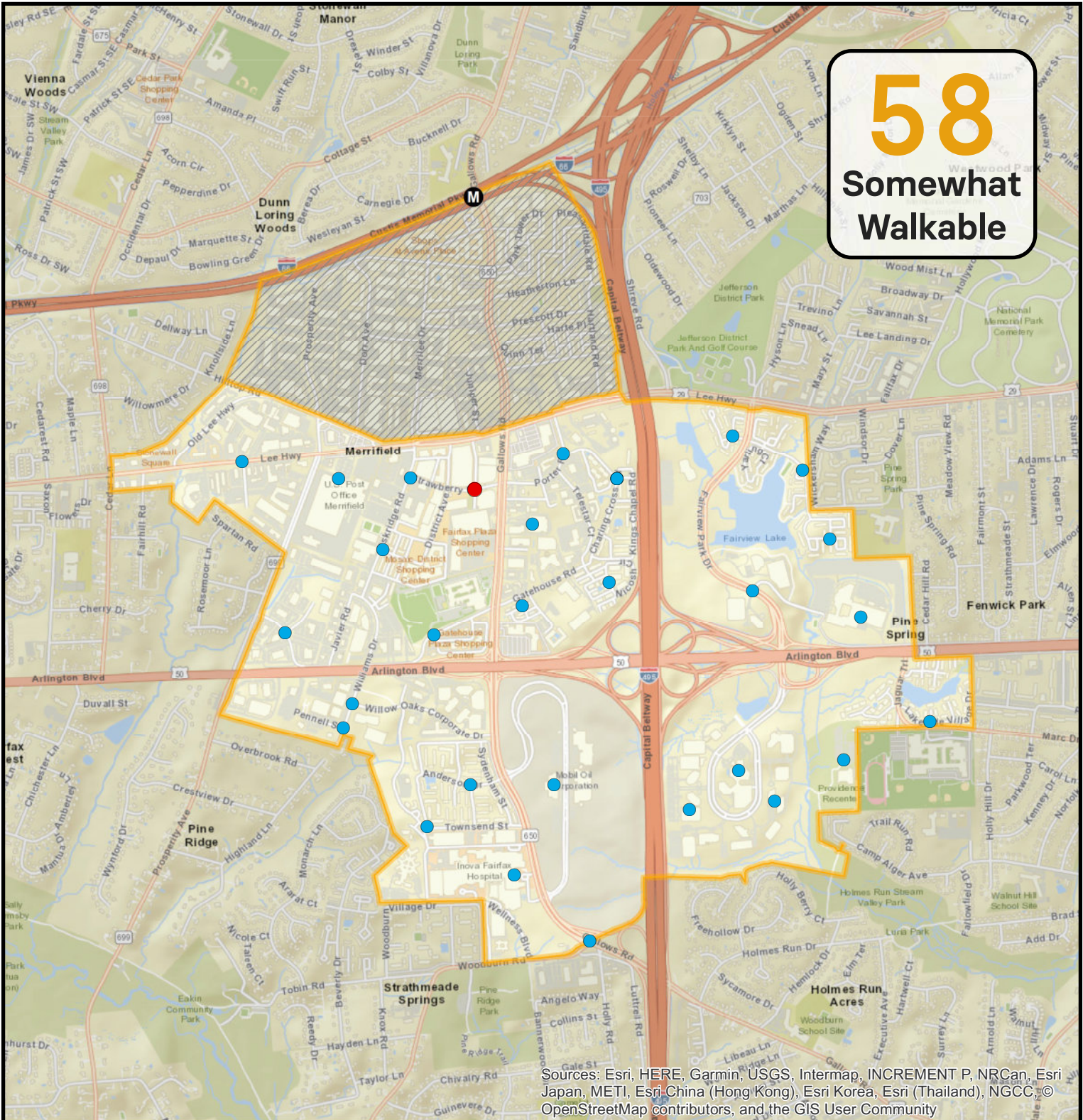


1,000

Feet

# Merrifield Suburban Center Activity Walkscore Points

**58**  
Somewhat  
Walkable

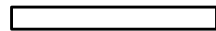


## Walkscore Points

- Revised 2018 Points (31)
- Original 2017 Point (1)



2,000



Feet

# North Gateway Community Business Center Activity Walkscore Points



## Walkscore Points

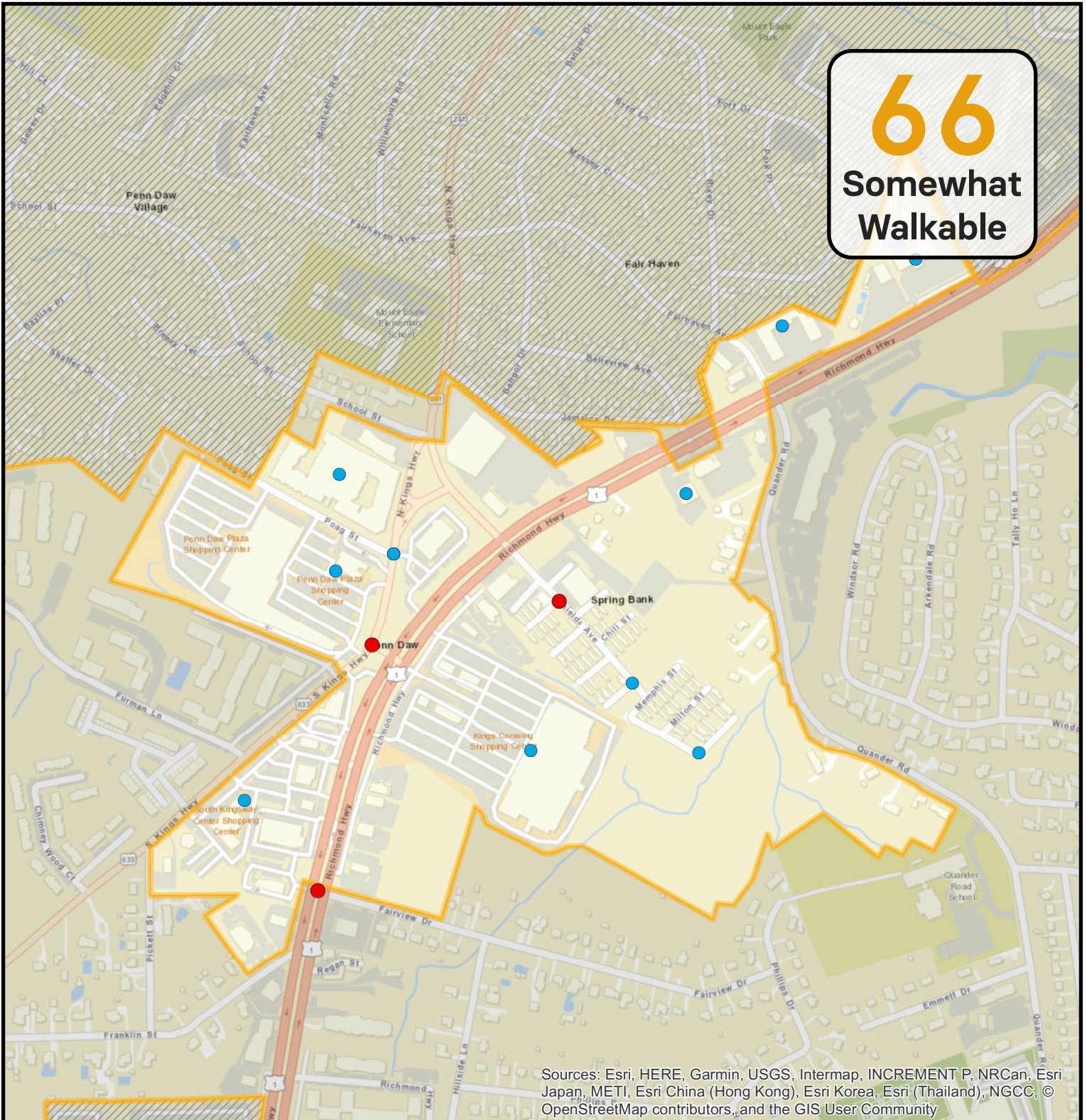
- Revised 2018 Points (2)
- Original 2017 Points (2)



510

Feet

# Penn Daw Community Business Center Activity Walkscore Points



## Walkscore Points

- Revised 2018 Points (12)
- Original 2017 Points (3)



500

Feet

# Ravensworth Industrial Area Activity Walkscore Points



## Walkscore Points

- Revised 2018 Point (1)
- Original 2017 Point (1)



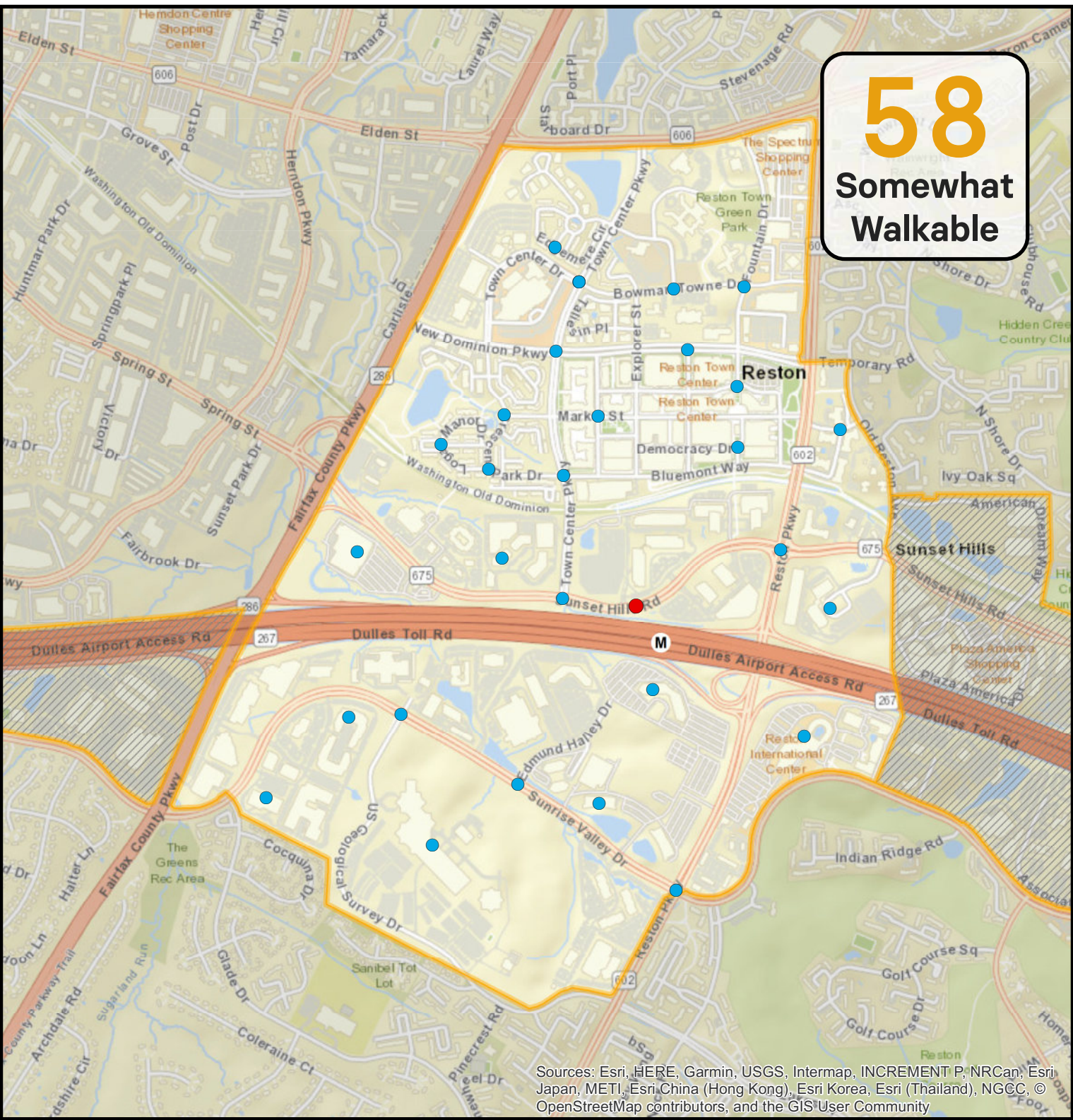
500

Feet



# Reston Town Center Transit Station Area Activity Walkscore Points

**58**  
Somewhat  
Walkable



Sources: Esri, HERE, Garmin, USGS, Intermap, INCREMENT P, NRCan, Esri Japan, METI, Esri China (Hong Kong), Esri Korea, Esri (Thailand), NGCC, © OpenStreetMap contributors, and the GIS User Community

## Walkscore Points

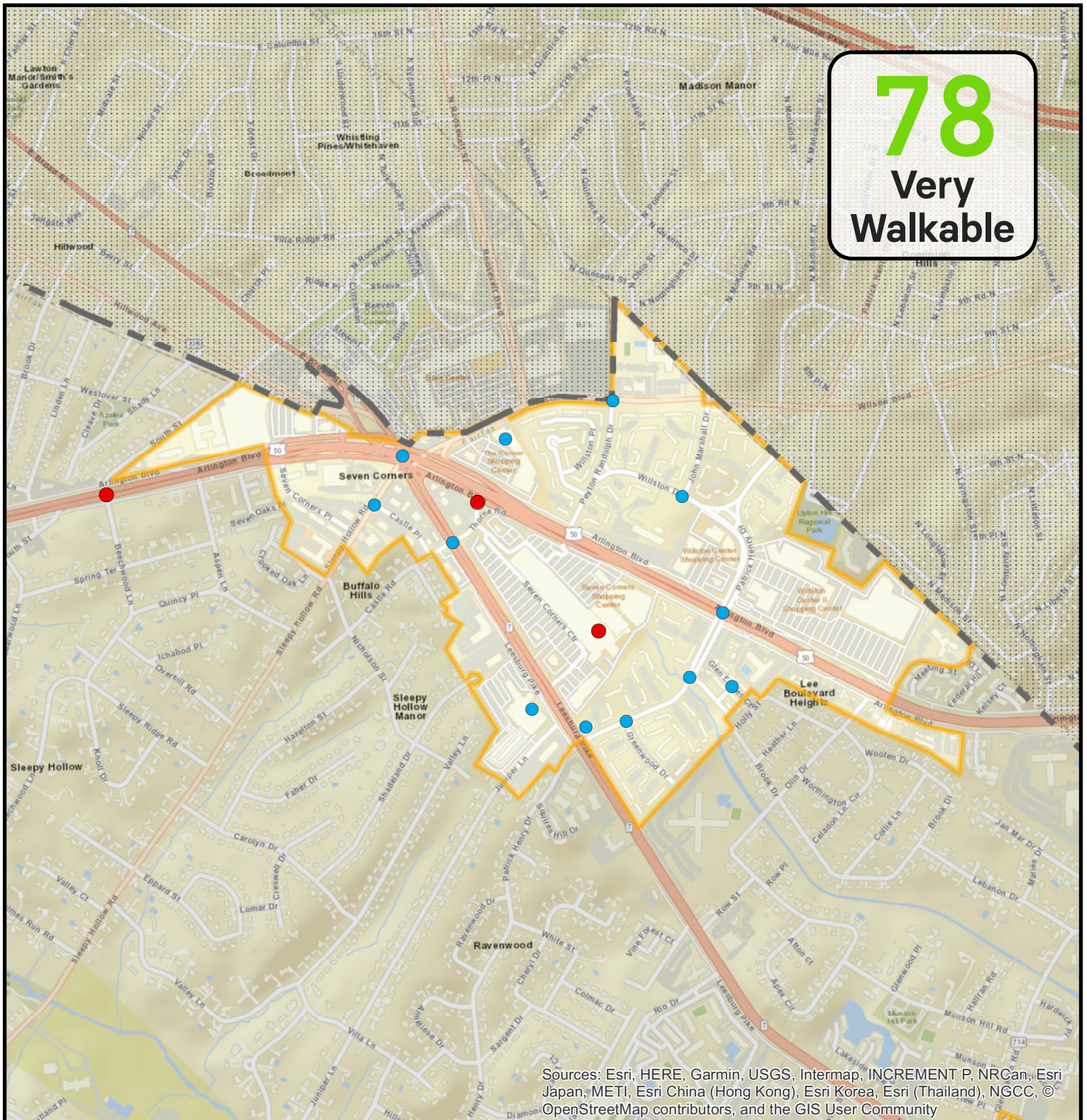
- Revised 2018 Points (29)
- Original 2017 Point (1)



2,000

Feet

# Seven Corners Community Business Center Activity Walkscore Points



## Walkscore Points

- Revised 2018 Points (12)
- Original 2017 Points (3)



2,000

Feet

# South County Center Community Business Center Activity Walkscore Points



## Walkscore Points

- Revised 2018 Points (7)
- Original 2017 Point (2)



500

Feet

# Springfield Community Business Center Activity Walkscore Points



## Walkscore Points

- Revised 2018 Points (23)
- Original 2017 Point (1)

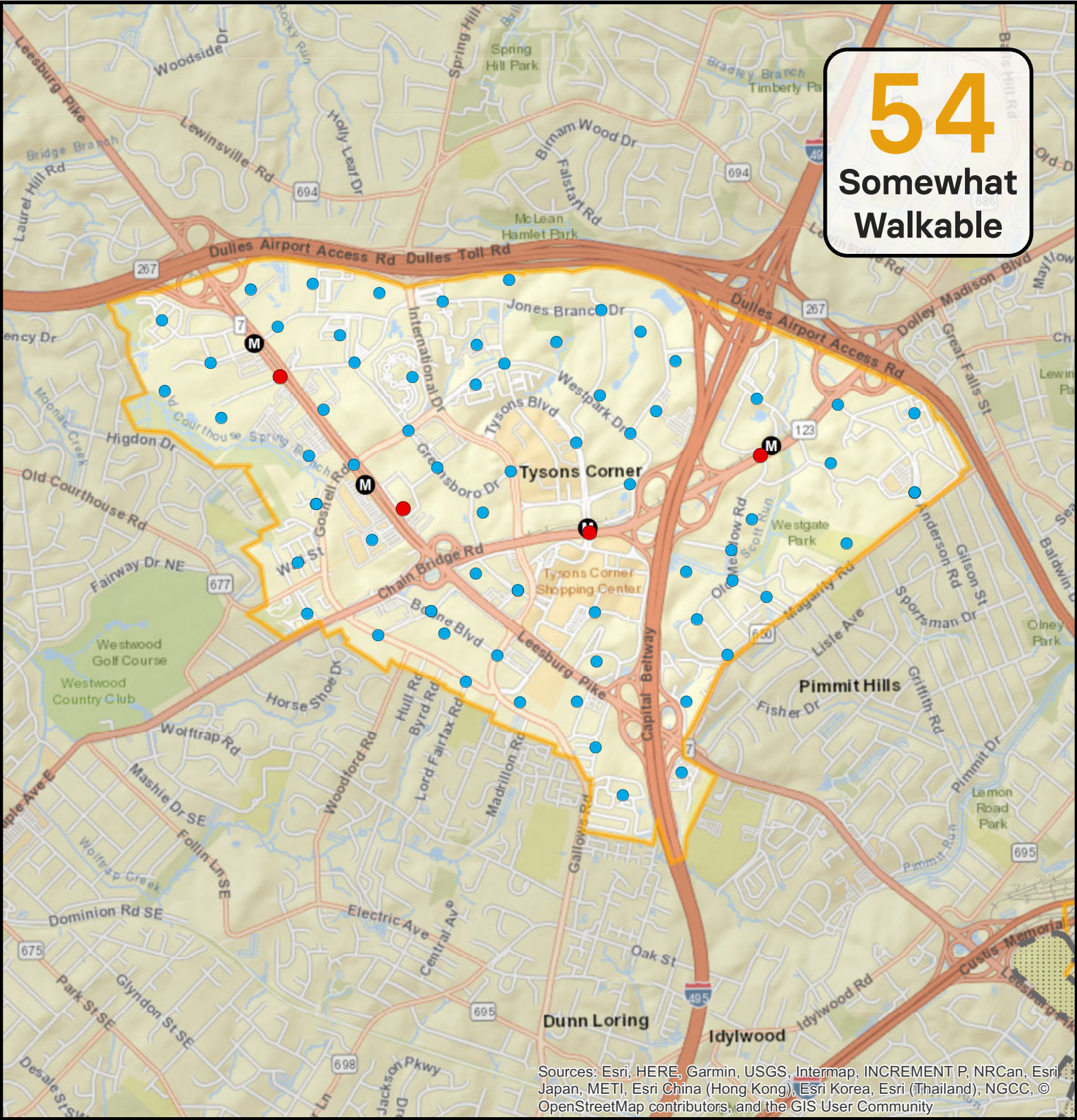


1,000

Feet

# Tysons Urban Center Activity Walkscore Points

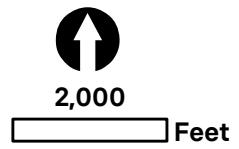
**54**  
Somewhat  
Walkable



Sources: Esri, HERE, Garmin, USGS, Intermap, INCREMENT P, NRCan, Esri Japan, METI, Esri China (Hong Kong), Esri Korea, Esri (Thailand), NGCC, © OpenStreetMap contributors, and the GIS User Community

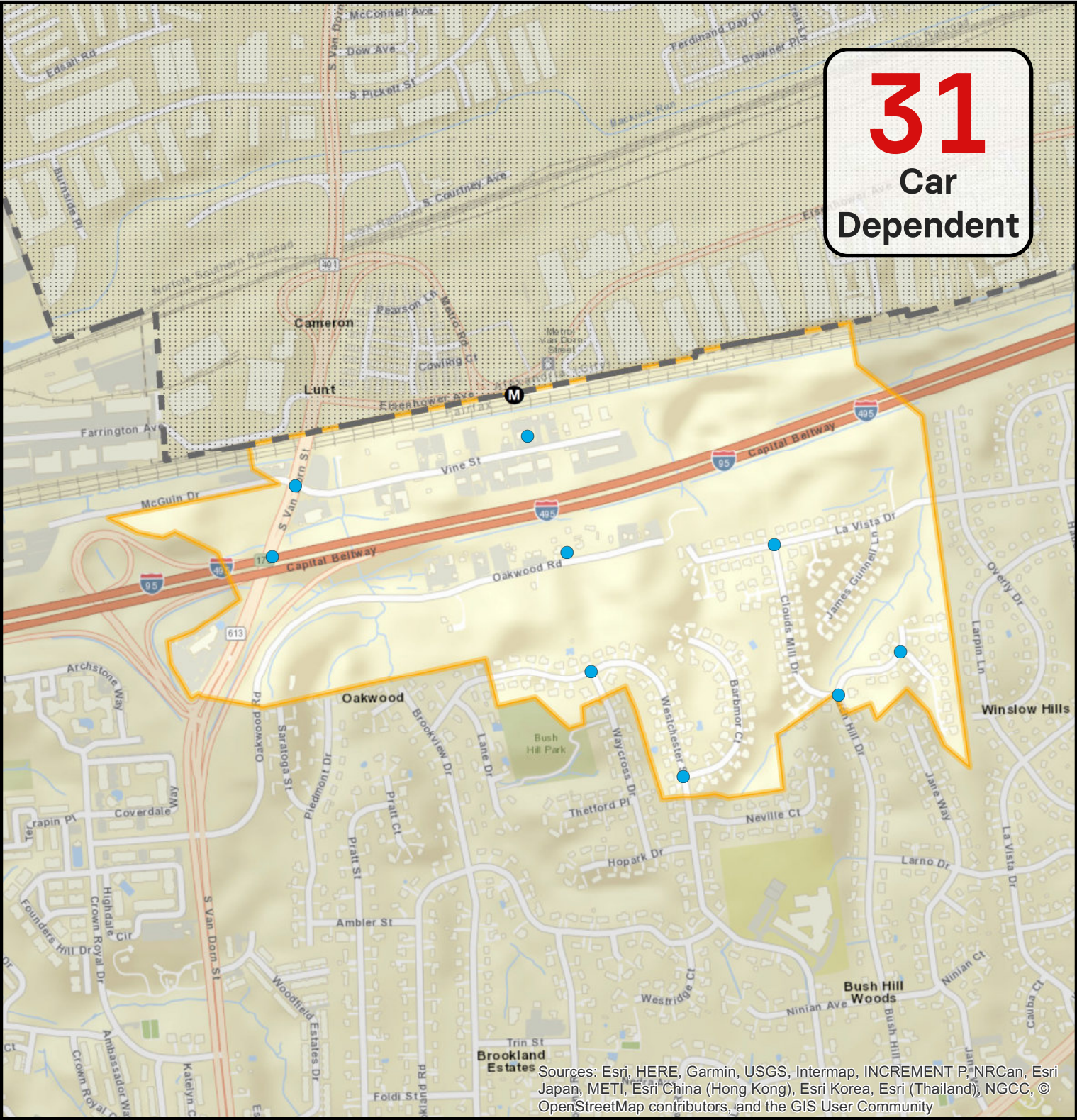
## Walkscore Points

- Revised 2018 Points (70)
- Original 2017 Points (4)



# Van Dorn Transit Station Area Activity Walkscore Points

**31**  
Car  
Dependent



Sources: Esri, HERE, Garmin, USGS, Intermap, INCREMENT P, NRCan, Esri Japan, METI, Esri China (Hong Kong), Esri Korea, Esri (Thailand), NGCC, © OpenStreetMap contributors, and the GIS User Community

## Walkscore Points

- Revised 2018 Points (9)

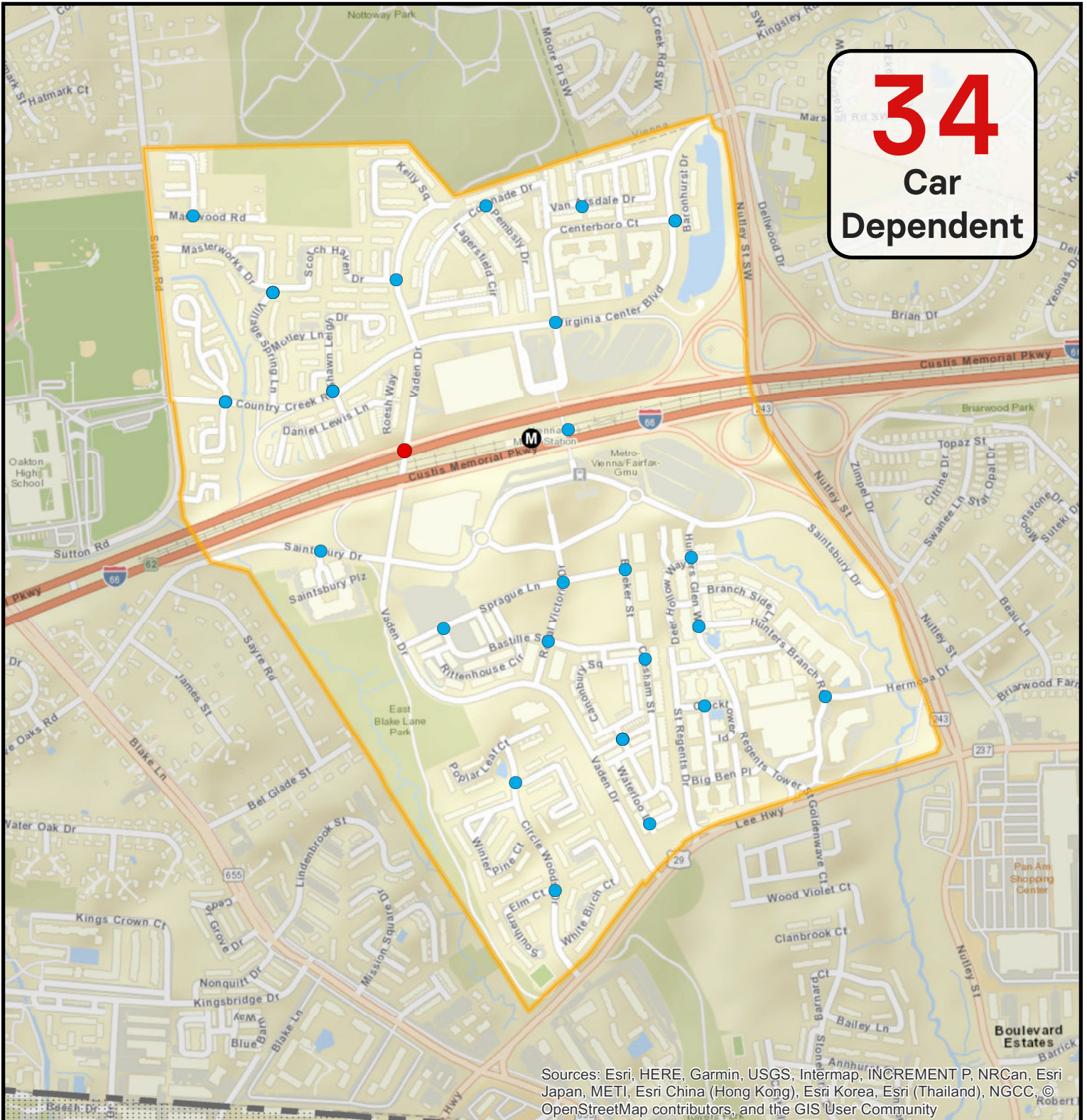


1,000

Feet

# Vienna Transit Station Area Activity Walkscore Points

**34**  
Car  
Dependent



Sources: Esri, HERE, Garmin, USGS, Intermap, INCREMENT P, NRCan, Esri Japan, METI, Esri China (Hong Kong), Esri Korea, Esri (Thailand), NGCC, © OpenStreetMap contributors, and the GIS User Community

## Walkscore Points

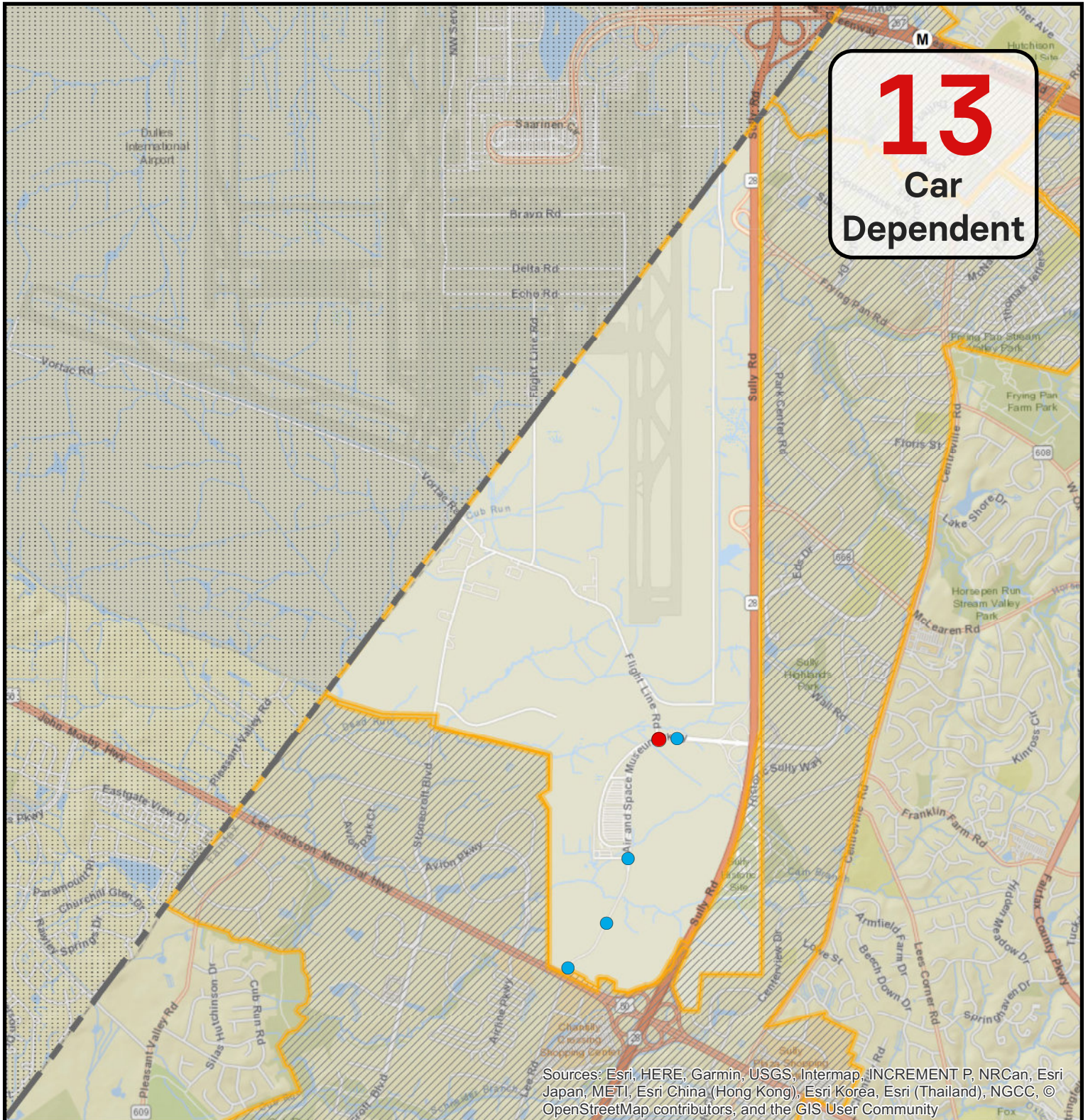
- Revised 2018 Points (31)
- Original 2017 Point (1)



1,000

Feet

# Washington Dulles International Airport Activity Walkscore Points



## Walkscore Points

- Revised 2018 Points (4)
- Original 2017 Point (1)



4,000

Feet



# West Falls Church Transit Station Area Activity Walkscore Points



## Walkscore Points

- Revised 2018 Points (10)
- Original 2017 Point (1)

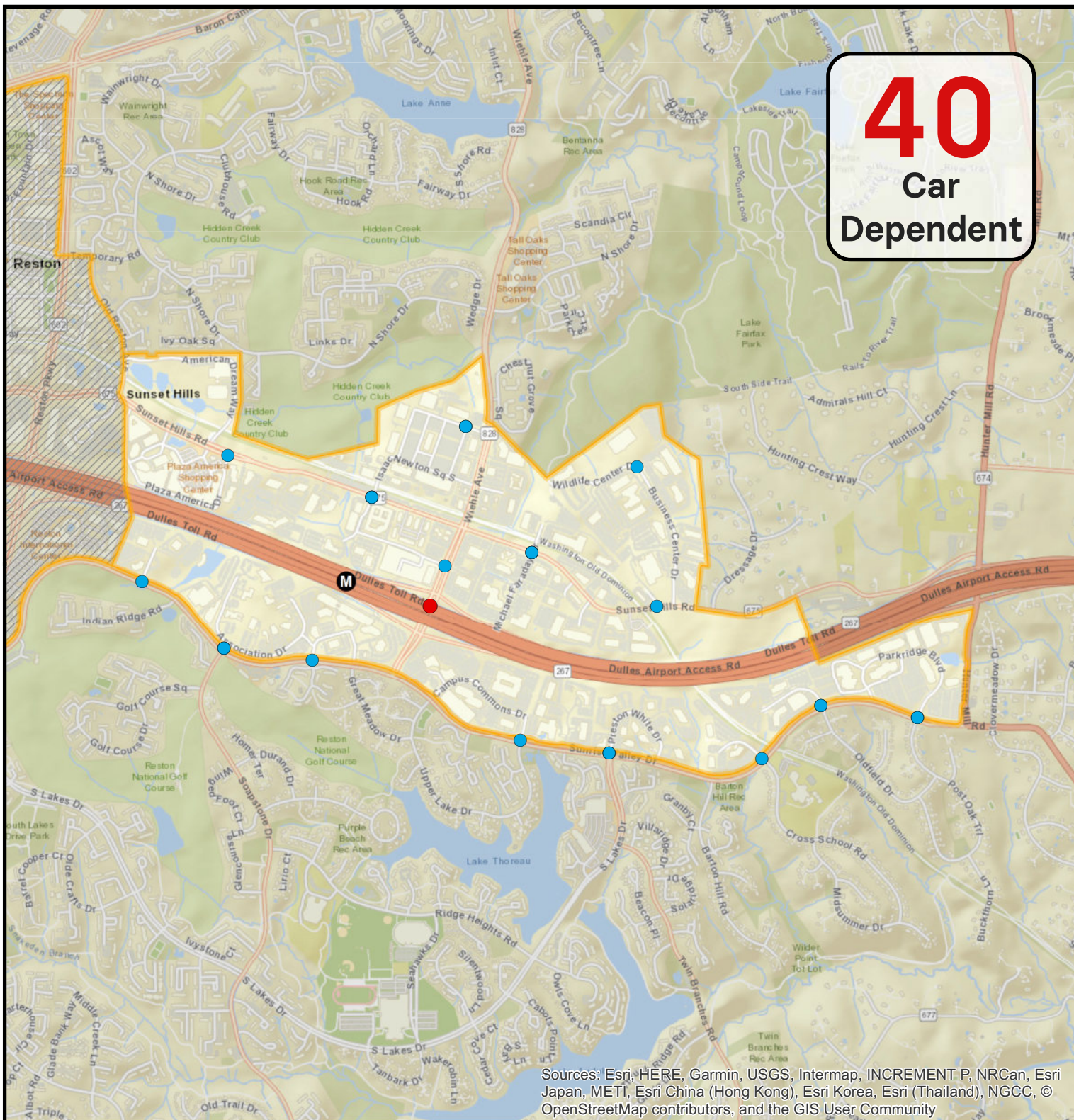


1,000

Feet

# Wiehle-Reston East Transit Station Area Activity Walkscore Points

**40**  
Car  
Dependent



## Walkscore Points

- Revised 2018 Points (24)
- Original 2017 Point (1)



2,000

Feet

