

V2X System for Future Transportation



FLUXITY
Redefine Traffic

Nathan Byun



Nathan Byun

Education



**B.S. in Industrial and
Systems Engineering**

Industry



QC Engineer

Business



Founder of a startup



**Transportation infrastructure
is the driving force
of economic growth**



Current road systems are at their limit





Estimated Annual Cost of Congestion is **\$150B+**



Source: www.fhwa.dot.gov/congestion
mobility.tamu.edu/ums

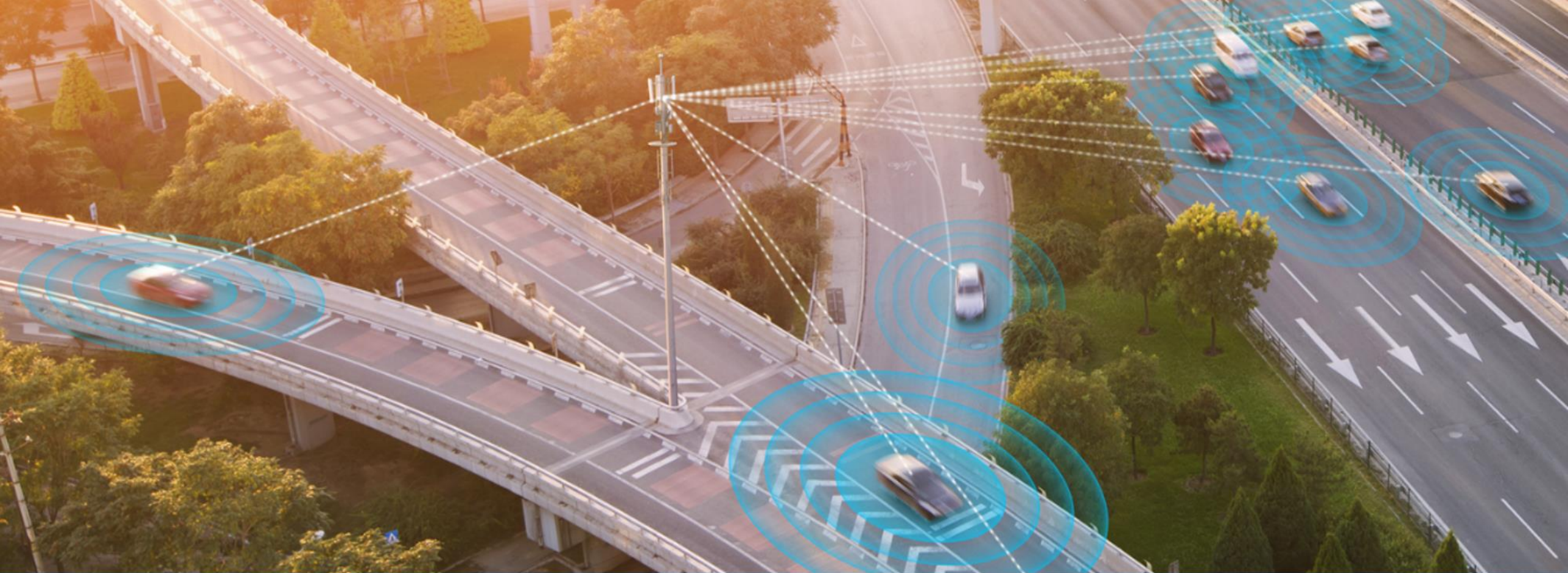




**Traffic Management hasn't
changed for 300 years**

Geographic History





Solution



Software



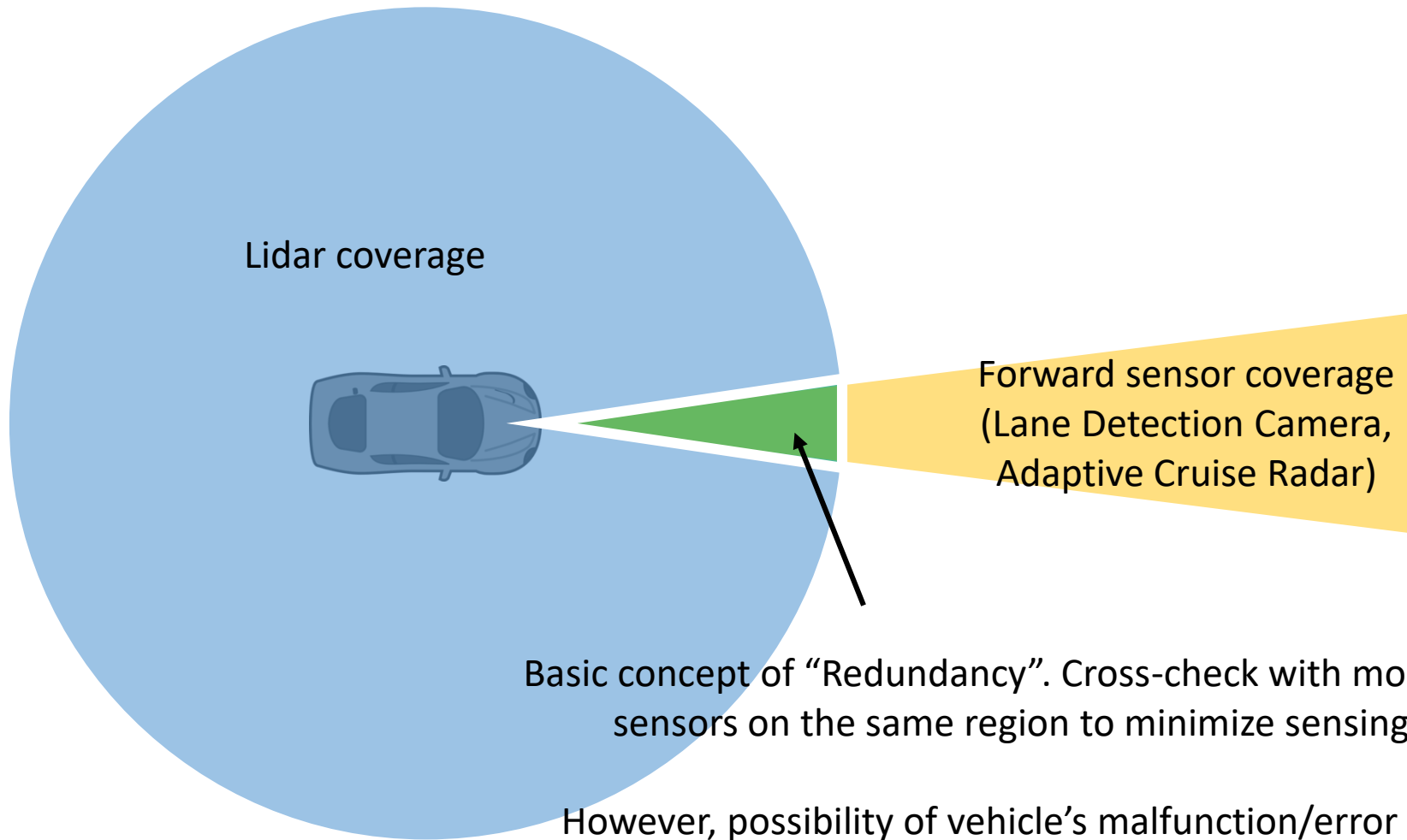
HW Design



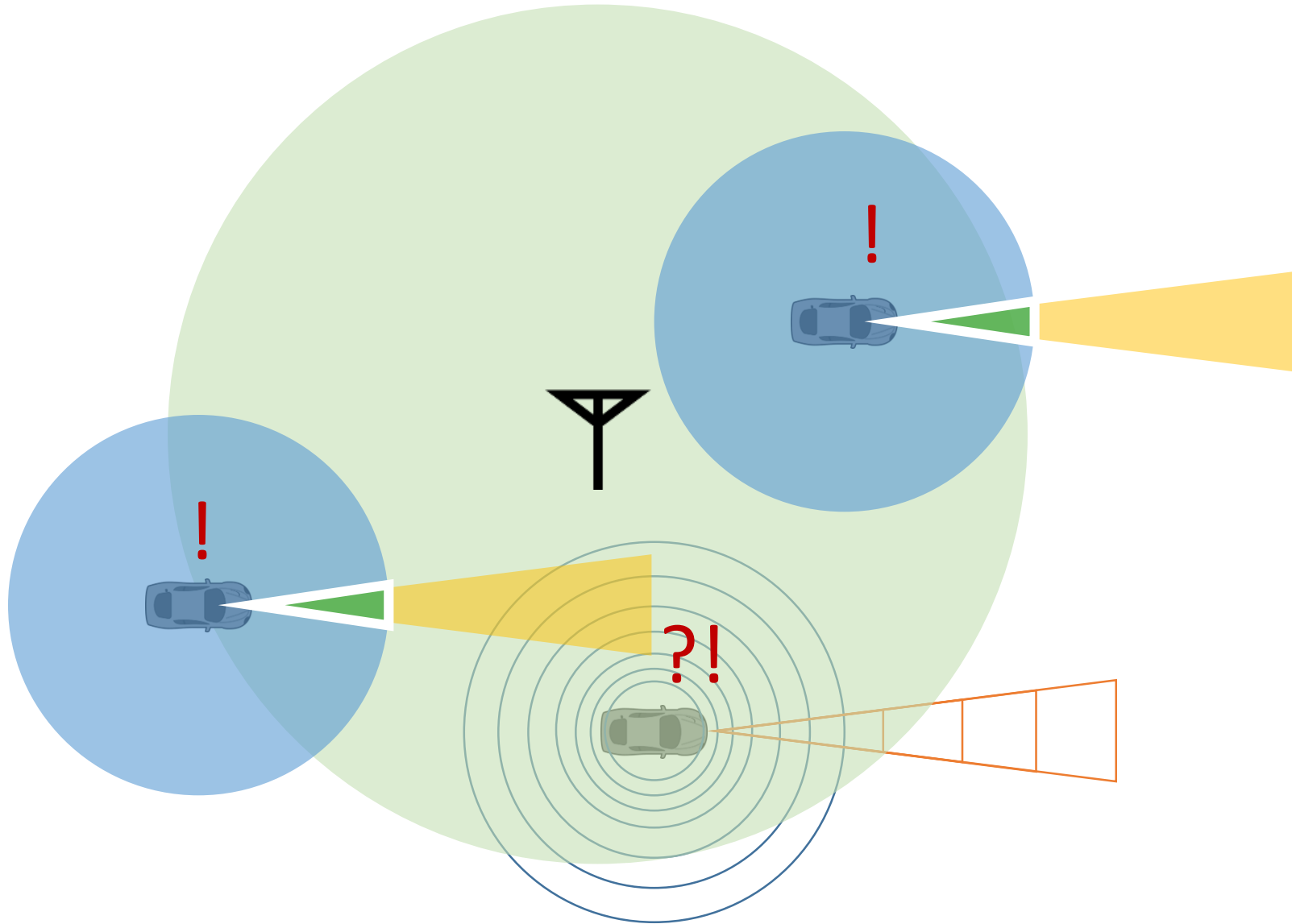
Construction

U.S. Patent #14/798,273

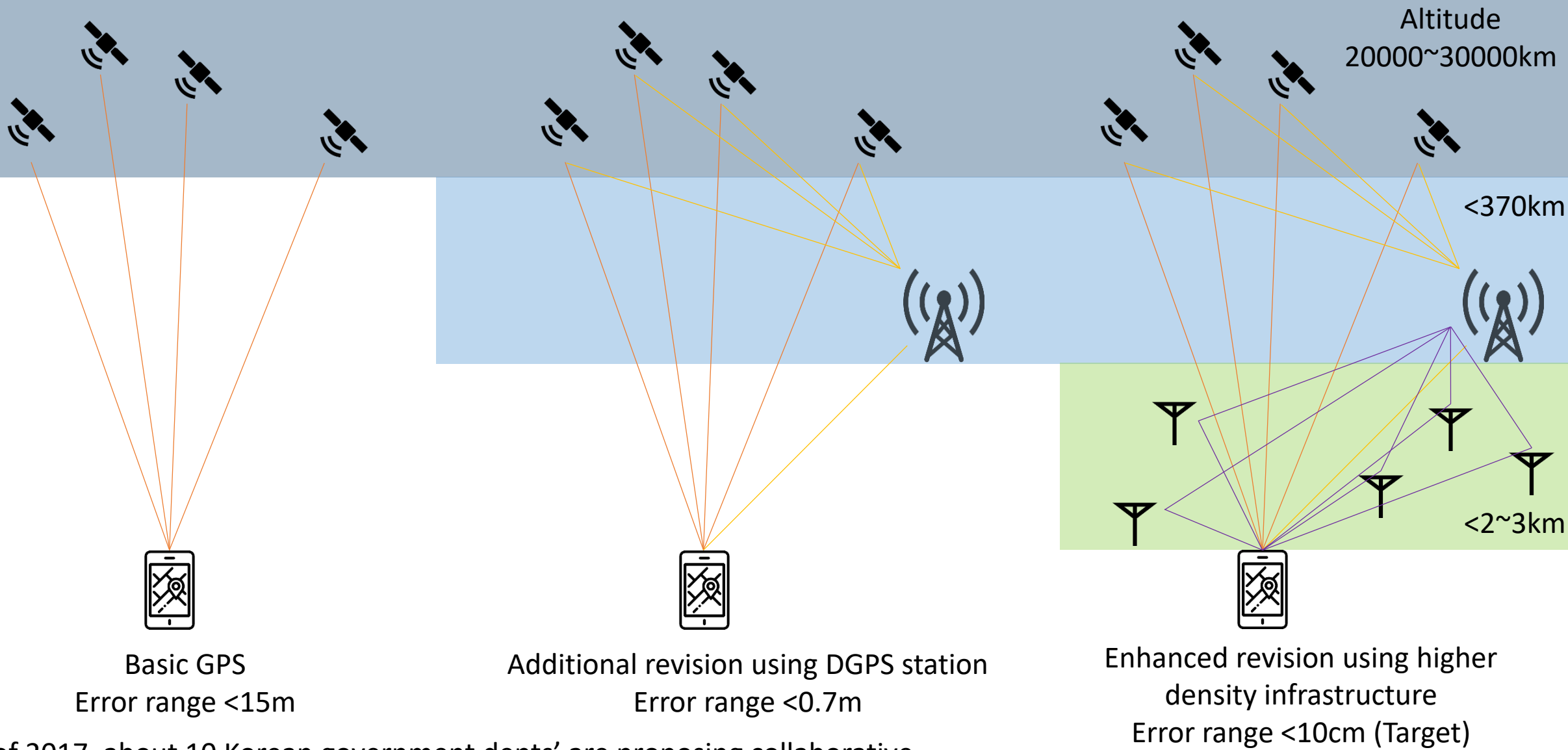
U.S. Patent #15/089,040



Redundancy through infrastructure



Improve accuracy of real-time location info & latency with infrastructure



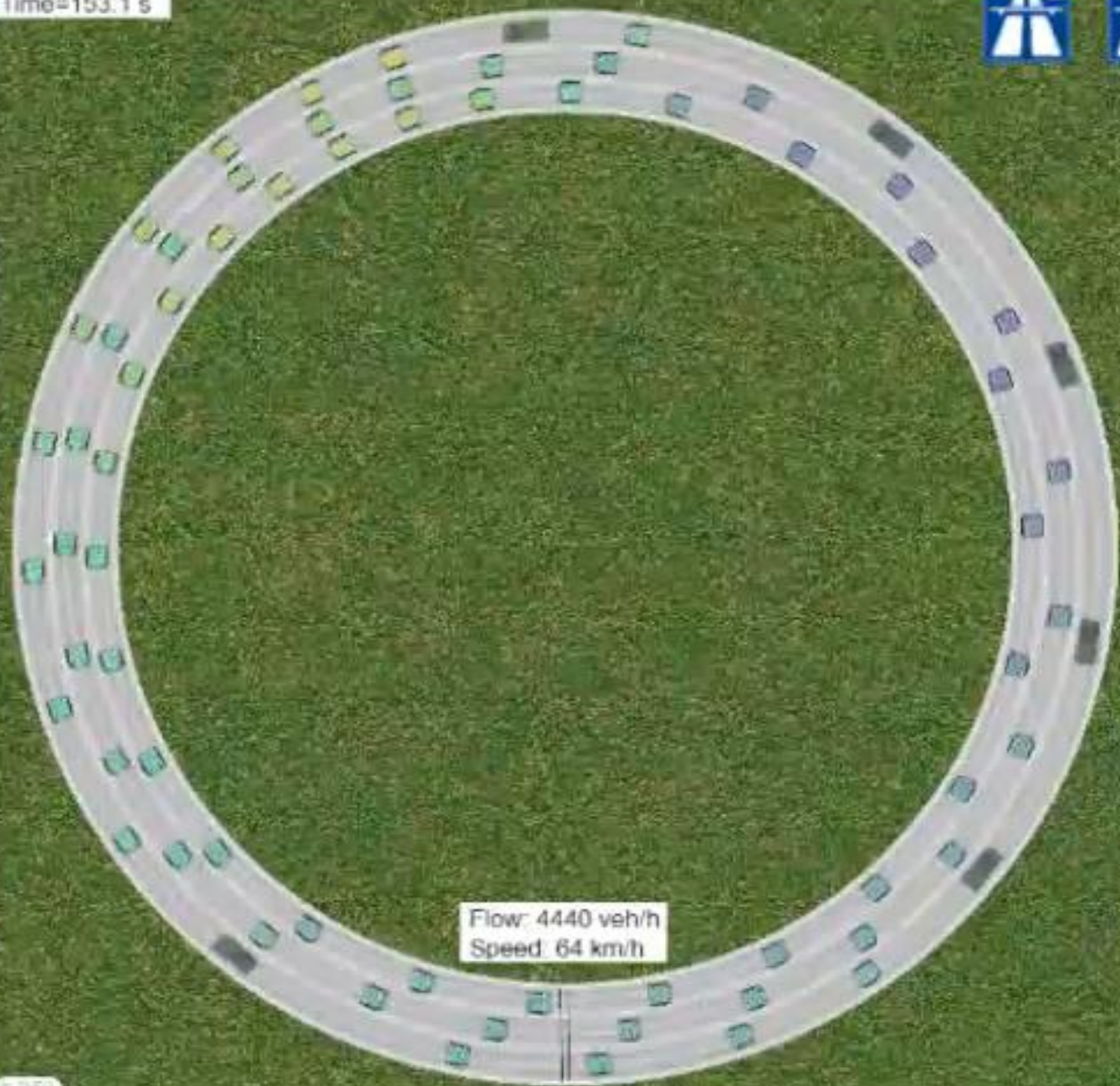
Basic GPS
Error range <15m

Additional revision using DGPS station
Error range <0.7m

Enhanced revision using higher density infrastructure
Error range <10cm (Target)

*As of 2017, about 10 Korean government depts' are proposing collaborative satellite accuracy enhancement project from 30m to 1m of error range.

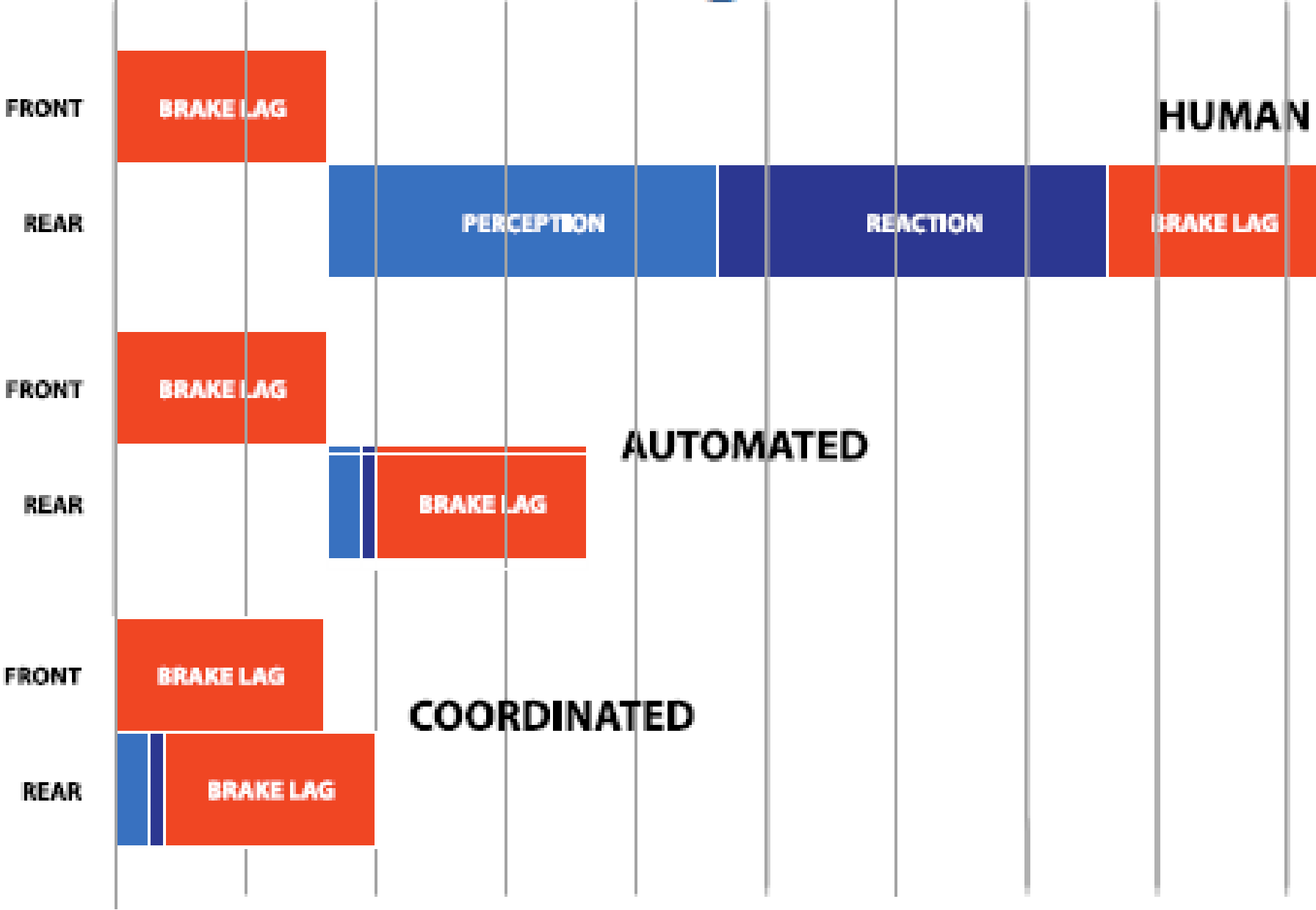
Time=153.1 s

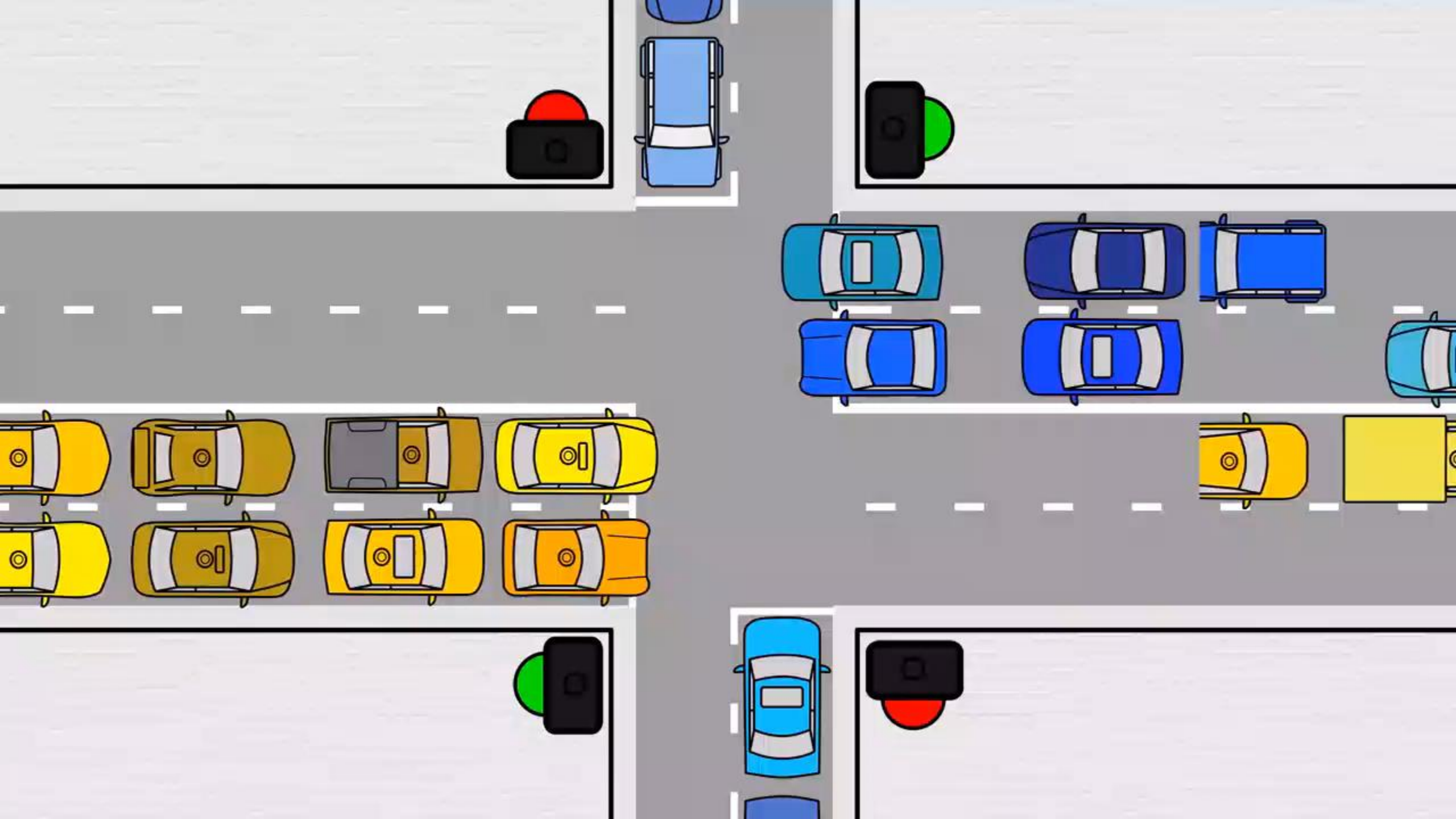


Flow: 4440 veh/h
Speed: 64 km/h



Connected Braking



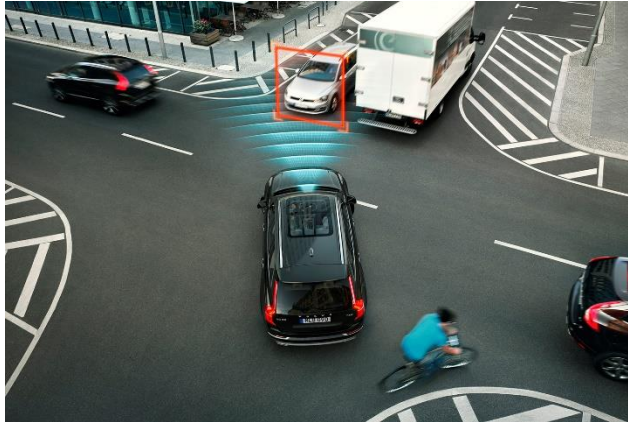


"Light Traffic" by
MIT Senseable City Lab,
ETHZ & CNR





**Solution to
Traffic Congestion
(Could potentially
replace traffic light)**



**Safety Assurance to
Autonomous Vehicles**



**Better Connectivity,
more accurate GIS
without latency—
Possible new
opportunity**



"Does your car have any idea why my car pulled it over?"



nathan.byun@gatech.edu



in/na6an



nathan6